

Vegetation Management History

Lower Bidwell Park




1994 - 2005

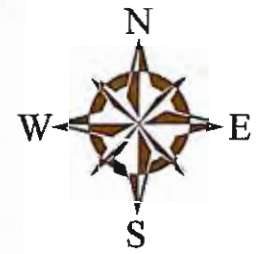
Legend

Vegetation Management Areas

-  1994, Broadcast Burn
-  1996, Hand cut and Burn
-  1998, Hand cut
-  2000, Goat
-  2001, Hand cut
-  2001, Goat
-  2003, Hand cut
-  2003, Goat
-  2005, Hand cut

Roadways

-  HWY 99
-  PETERSON MEMORIAL
-  SOUTHPARK



Information Sources

A primary source of information on management activities by year was the Vegetation Management Report. A ride-along with Ranger Bob Donahue also informed more specific locations and activities which are recorded within the ArcGIS shapefile attribute table.

Spatial information on historic management actions in Bidwell Park is currently being refined; in particular, Arundo donax treatment and Friends of Bidwell Park restoration areas.

As more specific locational information becomes available, updates should be made to this GIS database.

City of Chico
California

Map by
Rebekah Fines
Graduate Student
CSU Chico Masters Public Administration

September 2008

Data Sources:
Parcel BCAG Parcel Data, c. 2006
Aerial BCAG Aerial Data, c. 2006

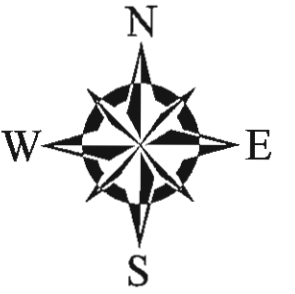
Projected Coordinate System: NAD_1983_UTM_ZONE_10N
Geographic Coordinate System: GCS_North_America_1983



Vegetation Management History

Upper Bidwell Park

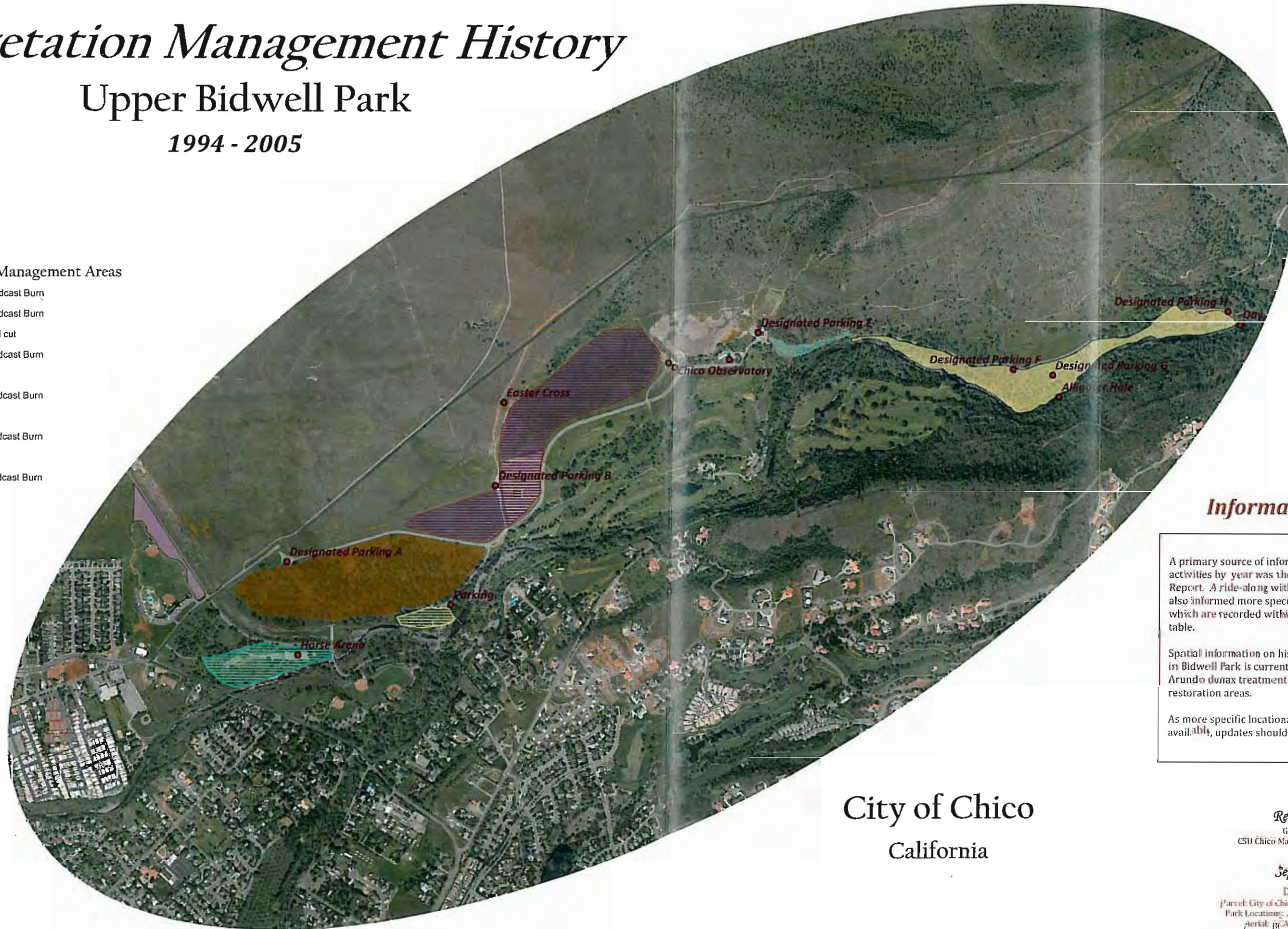
1994 - 2005



Legend

Vegetation Management Areas

- 1994, Broadcast Burn
- 1997, Broadcast Burn
- 1998, Hand cut
- 1999, Broadcast Burn
- 1999, Goat
- 2000, Broadcast Burn
- 2000, Goat
- 2001, Broadcast Burn
- 2001, Goat
- 2002, Broadcast Burn
- 2002, Goat



Information Sources

A primary source of information on management activities by year was the Vegetation Management Report. A ride-along with Ranger Bob Donahue also informed more specific locations and activities which are recorded within the ArcGIS shapefile attribute table.

Spatial information on historic management actions in Bidwell Park is currently being refined; in particular, *Arundo donax* treatment and Friends of Bidwell Park restoration areas.

As more specific locational information becomes available, updates should be made to this GIS database.

City of Chico
California

Map by
Rebekah Funes
Graduate Student
CSU Chico Masters Public Administration

September 2008

Data Sources:

Parcel: City of Chico, Upper Park Boundary c. 2004
Park Location: City of Chico, Bidwell Park Sites
Aerial: RCAG Aerial Data, 1:25,000 c. 2005

Projected Coordinate System: NAD 1983, UTM, ZONE 10N
Geographic Coordinate System: GCS_North_America_1983

