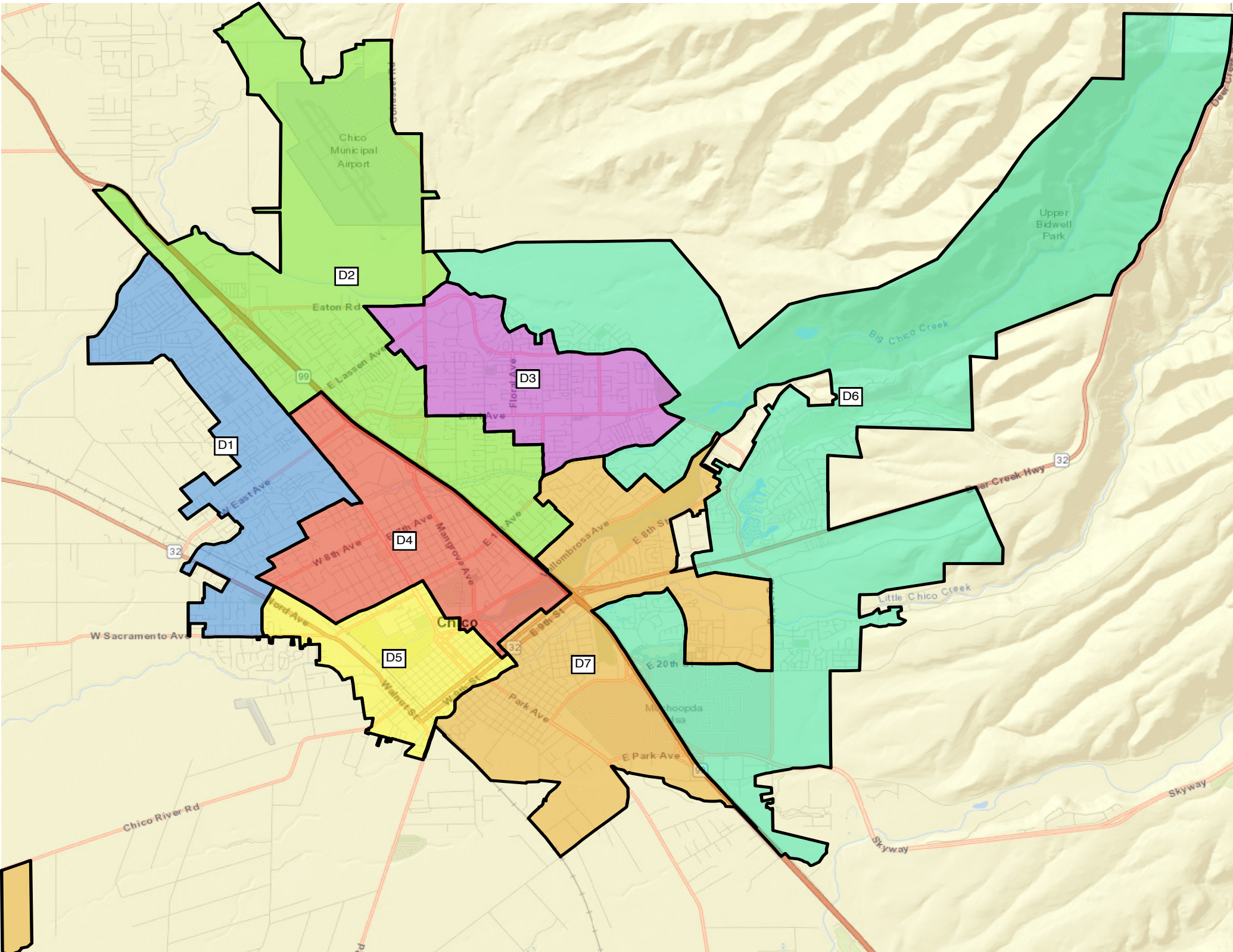




PUBLIC SUBMISSION MAP 6B
HELP PEOPLE VOTE MAP REVISED



D2

D3

D6

D1

D4

D7

D5



TOTAL Population:	103,165
Mean Target Population:	14,738
Largest Positive Deviation:	568
Largest Negative Deviation:	-788
Overall Range in Deviation:	1,356
Overall Range in Deviation Percentage:	9.20%

Council District	TOTAL Population	Target Population	Target Deviation	Target Deviation (%)
1	13,950	14,738	-788	-5.35
2	14,124	14,738	-614	-4.17
3	13,960	14,738	-778	-5.28
4	15,264	14,738	526	3.57
5	15,292	14,738	554	3.76
6	15,269	14,738	531	3.60
7	15,306	14,738	568	3.85

Total Population by Race/Ethnicity

District	Total Population	NH White	Hispanic	NH Black	NH Asian	NH Other
1	13,950	9,727	2,404	198	590	1,031
		69.73%	17.23%	1.42%	4.23%	7.39%
2	14,124	9,466	2,793	214	401	1,250
		67.02%	19.77%	1.52%	2.84%	8.85%
3	13,960	9,439	2,460	172	752	1,137
		67.61%	17.62%	1.23%	5.39%	8.15%
4	15,264	9,878	3,198	349	616	1,223
		64.71%	20.95%	2.29%	4.04%	8.01%
5	15,292	8,329	4,455	490	775	1,243
		54.47%	29.13%	3.20%	5.07%	8.13%
6	15,269	10,860	2,297	209	764	1,139
		71.12%	15.04%	1.37%	5.00%	7.47%
7	15,306	9,513	3,503	261	595	1,434
		62.15%	22.89%	1.71%	3.89%	9.36%
Total	103,165	67,212	21,110	1,893	4,493	8,457

Citizen Voting Age Population

District	Total CVAP	NH White CVAP	Hispanic CVAP	NH Black CVAP	NH Asian CVAP	NH Other CVAP
1	9,821	7,689	1,357	85	463	227
		78.29%	13.82%	0.87%	4.71%	2.31%
2	10,039	8,074	1,384	130	199	252
		80.43%	13.79%	1.29%	1.98%	2.79%
3	9,183	7,468	1,148	168	155	244
		81.32%	12.50%	1.83%	1.69%	2.66%
4	11,321	8,671	1,527	363	371	389
		76.59%	13.49%	3.21%	3.28%	3.43%
5	12,753	8,370	2,785	285	614	699
		65.63%	21.84%	2.23%	4.81%	5.49%
6	11,528	9,104	1,431	106	629	258
		78.97%	12.41%	0.92%	5.46%	2.24%
7	10,698	7,953	1,475	375	459	436
		74.34%	13.79%	3.51%	4.29%	4.07%
Total	75,343	57,329	11,107	1,512	2,890	2,505