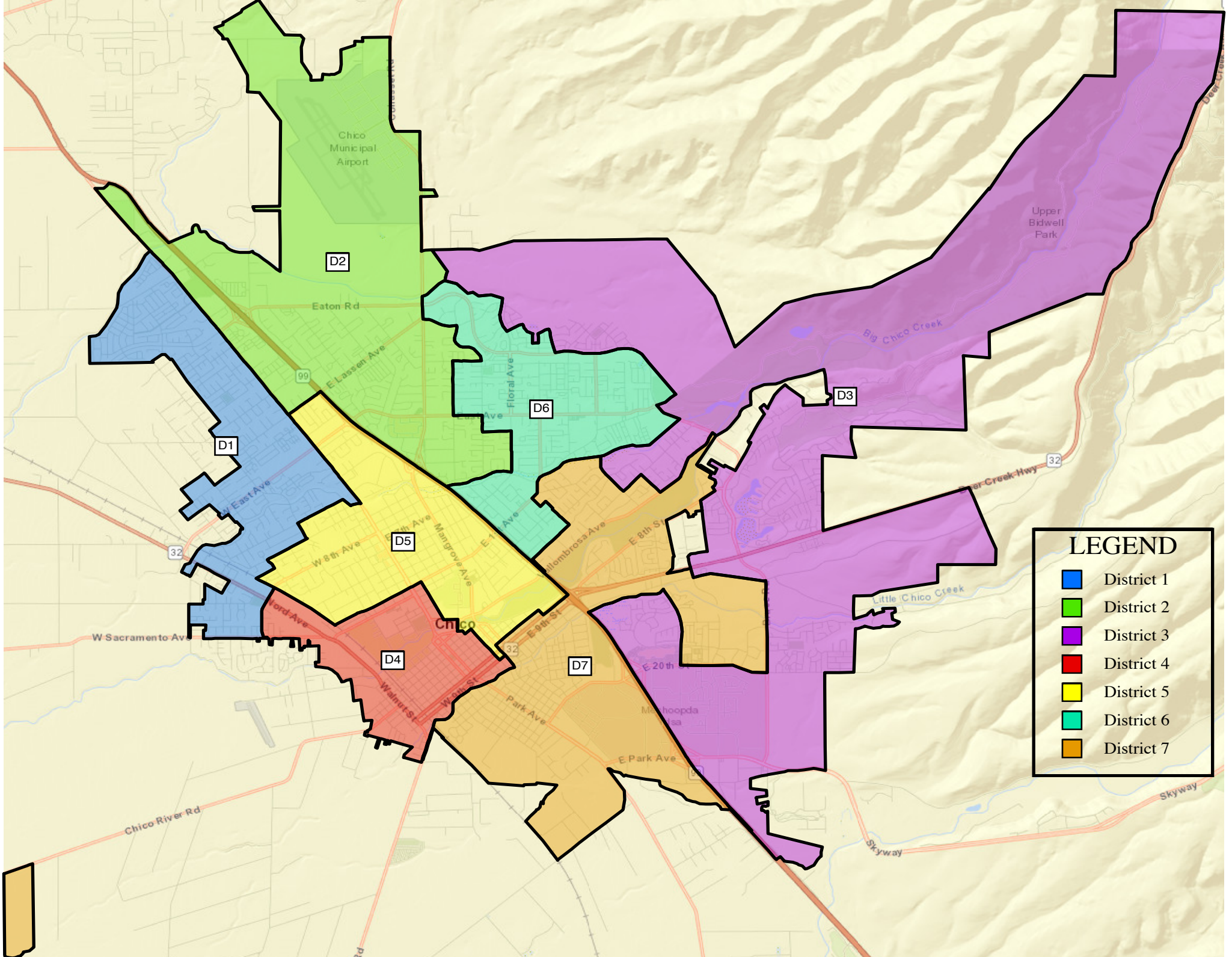




PUBLIC SUBMISSION MAP 6:  
HELP PEOPLE VOTE MAP



D2

D1

D5

D4

D6

D7

D3

**LEGEND**

- District 1
- District 2
- District 3
- District 4
- District 5
- District 6
- District 7

Chico Municipal Airport

Upper Bidwell Park

Eaton Rd

Big Chico Creek

99

32

32

W Sacramento Av

Chico

Chico River Rd

Skyway

Skyway

E Lassen Ave

Floral Ave

W East Ave

W 8th Ave

9th Ave

Mangrove Ave

E 10th Ave

Alombrosa Ave

E 8th St

Lord Ave

Walnut St

W 10th St

E 9th St

32

E 20th

Park Ave

E Park Ave

Little Chico Creek

Mashopda

Wassa

<b>TOTAL Population:</b>	<b>103,165</b>
Mean Target Population:	14,738
Largest Positive Deviation:	568
Largest Negative Deviation:	-788
Overall Range in Deviation:	1,356
Overall Range in Deviation Percentage:	9.20%

Council District	TOTAL Population	Target Population	Target Deviation	Target Deviation (%)
1	13,950	14,738	-788	-5.35
2	14,109	14,738	-629	-4.27
3	15,269	14,738	531	3.60
4	15,292	14,738	554	3.76
5	15,264	14,738	526	3.57
6	13,975	14,738	-763	-5.18
7	15,306	14,738	568	3.85

#### Total Population by Race/Ethnicity

District	Total Population	NH White	Hispanic	NH Black	NH Asian	NH Other
1	13,950	9,727	2,404	198	590	1,031
		69.73%	17.23%	1.42%	4.23%	7.39%
2	14,109	9,264	2,893	234	454	1,264
		65.66%	20.50%	1.66%	3.22%	8.96%
3	15,269	10,860	2,297	209	764	1,139
		71.12%	15.04%	1.37%	3.20%	9.27%
4	15,292	8,329	4,455	490	775	1,243
		54.47%	29.13%	3.20%	5.07%	8.13%
5	15,264	9,878	3,198	349	616	1,223
		64.71%	20.95%	2.29%	4.04%	8.01%
6	13,975	9,641	2,360	152	699	1,123
		68.99%	16.89%	1.09%	5.00%	8.03%
7	15,306	9,513	3,503	261	595	1,434
		62.15%	22.89%	1.71%	3.89%	9.36%
<b>Total</b>	<b>103,165</b>	<b>67,212</b>	<b>21,110</b>	<b>1,893</b>	<b>4,493</b>	<b>8,457</b>

### Citizen Voting Age Population

District	Total CVAP	NH White CVAP	Hispanic CVAP	NH Black CVAP	NH Asian CVAP	NH Other CVAP
1	9,821	7,689	1,357	85	463	227
		78.29%	13.82%	0.87%	4.71%	2.31%
2	9,577	7,639	1,339	153	179	267
		79.76%	13.98%	1.60%	1.87%	2.79%
3	11,528	9,104	1,431	106	629	258
		78.97%	12.41%	0.92%	5.46%	2.24%
4	12,753	8,370	2,785	285	614	699
		65.63%	21.84%	2.23%	4.81%	5.49%
5	11,321	8,671	1,527	363	371	389
		76.59%	13.49%	3.21%	3.28%	3.43%
6	9,645	7,903	1,193	145	175	229
		81.94%	12.37%	1.50%	1.81%	2.38%
7	10,698	7,953	1,475	375	459	436
		74.34%	13.79%	3.51%	4.29%	4.07%
<b>Total</b>	<b>75,343</b>	<b>57,329</b>	<b>11,107</b>	<b>1,512</b>	<b>2,890</b>	<b>2,505</b>