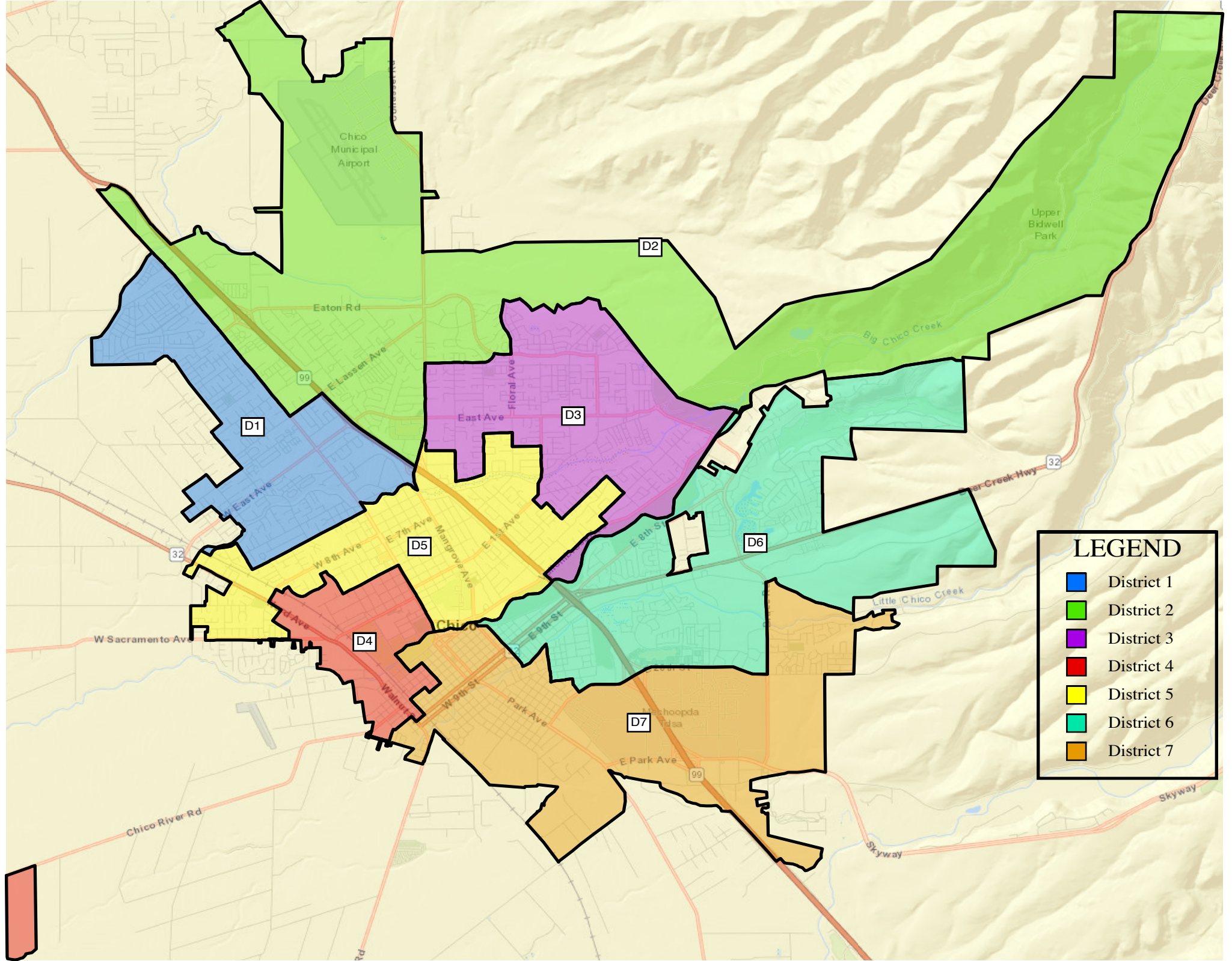




PUBLIC SUBMISSION MAP 5:
FAIR FOR ALL MAP



LEGEND

- District 1
- District 2
- District 3
- District 4
- District 5
- District 6
- District 7

TOTAL Population:	103,165
Mean Target Population:	14,738
Largest Positive Deviation:	582
Largest Negative Deviation:	-685
Overall Range in Deviation:	1,267
Overall Range in Deviation Percentage:	8.60%

Council District	TOTAL Population	Target Population	Target Deviation	Target Deviation (%)
1	15,320	14,738	582	3.95
2	14,053	14,738	-685	-4.65
3	14,291	14,738	-447	-3.03
4	15,234	14,738	496	3.37
5	14,367	14,738	-371	-2.52
6	15,218	14,738	480	3.26
7	14,682	14,738	-56	-0.38

Total Population by Race/Ethnicity

District	Total Population	NH White	Hispanic	NH Black	NH Asian	NH Other
1	15,320	10,505	2,827	209	648	1,131
		68.57%	18.45%	1.36%	4.23%	7.39%
2	14,053	8,921	3,030	254	588	1,260
		63.48%	21.56%	1.81%	4.18%	8.97%
3	14,291	10,312	2,163	133	607	1,076
		72.16%	15.14%	0.93%	4.25%	7.52%
4	15,234	7,940	4,764	533	860	1,137
		52.12%	31.27%	3.50%	5.65%	7.46%
5	14,367	10,319	2,153	223	453	1,219
		71.82%	14.99%	1.55%	3.15%	8.49%
6	15,218	10,335	2,704	283	756	1,140
		67.91%	17.77%	1.86%	4.97%	7.49%
7	14,682	8,880	3,469	258	581	1,494
		60.48%	23.63%	1.76%	3.96%	10.17%
Total	103,165	67,212	21,110	1,893	4,493	8,457

Citizen Voting Age Population

District	Total CVAP	NH White CVAP	Hispanic CVAP	NH Black CVAP	NH Asian CVAP	NH Other CVAP
1	11,182	8,668	1,519	165	520	310
		77.52%	13.58%	1.48%	4.65%	2.77%
2	9,375	7,226	1,453	231	246	219
		77.08%	15.50%	2.46%	2.62%	2.34%
3	9,515	8,210	870	69	64	302
		86.28%	9.14%	0.73%	0.67%	3.18%
4	12,174	7,573	2,810	465	662	664
		62.21%	23.08%	3.82%	5.44%	5.45%
5	10,408	8,466	1,421	52	246	223
		81.34%	13.65%	0.50%	2.36%	2.15%
6	11,390	8,737	1,509	354	583	207
		76.71%	13.25%	3.11%	5.12%	1.81%
7	11,299	8,449	1,525	176	569	580
		74.78%	13.50%	1.56%	5.04%	5.12%
Total	75,343	57,329	11,107	1,512	2,890	2,505