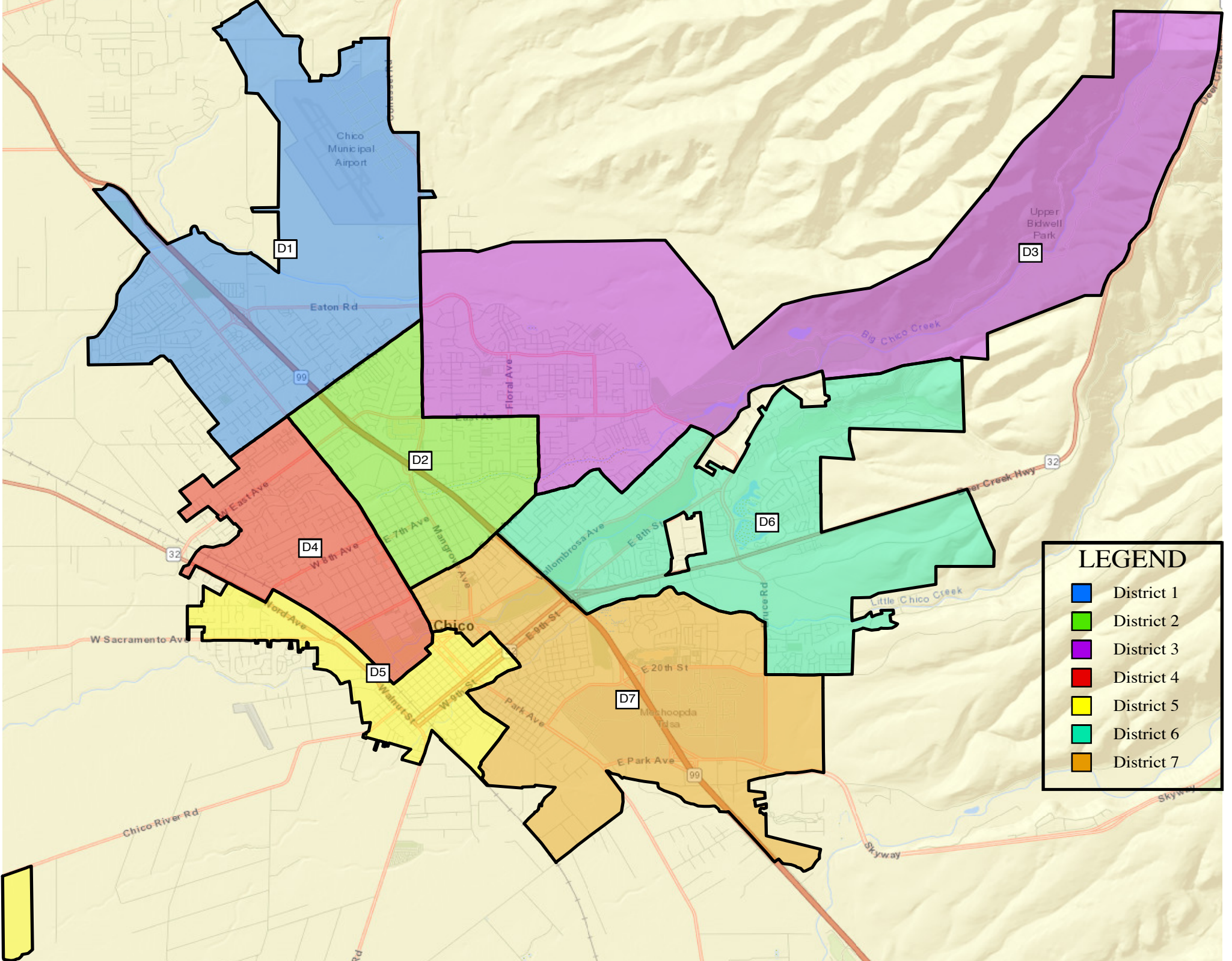




DEMOGRAPHER PROPOSAL 2



ARDA REDISTRICTING



LEGEND

- District 1
- District 2
- District 3
- District 4
- District 5
- District 6
- District 7

Total Population:	103,165
Mean Target Population:	14,738
Largest Positive Deviation:	522
Largest Negative Deviation:	-614
Overall Range in Deviation:	1,136
Overall Range in Deviation Percentage:	7.71%

Council District	TOTAL Population	Target Population	Target Deviation	Target Deviation (%)
1	14,124	14,738	-614	-4.17
2	14,605	14,738	-133	-0.90
3	14,367	14,738	-371	-2.52
4	15,256	14,738	518	3.51
5	15,260	14,738	522	3.54
6	14,466	14,738	-272	-1.85
7	15,087	14,738	349	2.37

Total Population by Race/Ethnicity

District	Total Population	NH White	Hispanic	NH Black	NH Asian	NH Other
1	14,124	9,375	2,839	182	618	1,110
		66.38%	20.10%	1.29%	4.38%	7.85%
2	14,605	10,047	2,549	262	464	1,283
		68.79%	17.45%	1.79%	3.18%	8.79%
3	14,367	9,890	2,440	155	770	1,113
		68.84%	16.98%	1.08%	5.36%	7.74%
4	15,256	9,436	3,600	376	629	1,215
		61.85%	23.60%	2.46%	4.12%	7.97%
5	15,260	8,684	4,173	439	736	1,228
		56.91%	27.35%	2.88%	4.82%	8.04%
6	14,466	10,691	1,965	147	603	1,060
		73.90%	13.58%	1.02%	4.17%	7.33%
7	15,087	9,089	3,544	332	673	1,100
		60.24%	23.49%	2.20%	4.46%	9.61%
Total	103,165	67,212	21,110	1,893	4,493	8,457

Citizen Voting Age Population

District	Total CVAP	NH White CVAP	Hispanic CVAP	NH Black CVAP	NH Asian CVAP	NH Other CVAP
1	9,214	7,168	1,379	82	338	247
		77.79%	14.97%	0.89%	3.67%	2.68%
2	10,886	9,043	1,235	152	231	225
		83.07%	11.34%	1.40%	2.12%	2.07%
3	9,321	7,633	1,123	172	159	234
		81.89%	12.05%	1.84%	1.71%	2.51%
4	12,374	8,936	1,966	404	523	545
		72.22%	15.89%	3.26%	4.23%	4.40%
5	12,115	7,971	2,690	221	617	616
		65.79%	22.20%	1.82%	5.10%	5.09%
6	10,820	9,040	1,078	103	345	254
		83.55%	9.96%	0.80%	3.19%	2.50%
7	10,613	7,538	1,636	378	677	384
		71.03%	15.41%	3.56%	6.38%	3.62%
Total	75,343	57,329	11,107	1,512	2,890	2,505