



CITY OF CHICO
BIDWELL PARK AND PLAYGROUND COMMISSION (BPPC)
NATURAL RESOURCE COMMITTEE
Regular Meeting Agenda
July 10 2014, 6:00 p.m.
Municipal Center - 421 Main Street, Conference Room 2

Materials related to an item on this Agenda are available for public inspection in the Park Division Office at 411 Main Street, 2nd Floor during normal business hours or online at <http://www.chico.ca.us/>.

1. **CALL TO ORDER**

2. **REGULAR AGENDA**

2.1. **UPDATE ON THE CAPER ACRES RENOVATION AND MASTER PLAN**

Due to aging infrastructure and the need for renovation, the BPPC included the renovation of Caper Acres in its 2013-2014 Work Plan. This is the fourth in a series of public meetings that will allow opportunities for public input on the project. Consultant and Staff will present a refined design, and a list of priorities and costs. Committee input will be used in the Master Renovation Plan. **Recommendation:** 1) Provide input on refined design and list of priorities, and 2) Forward completed plan to the full BPPC for consideration.

2.2. **DISCUSSION OF NATURAL RESOURCE MANAGEMENT PLAN AND TRAIL PLAN PRIORITIES FOR LOWER BIDWELL PARK**

This item continues opportunities for public input in updating Bidwell Park's Natural Resources Management and Trail Plans. The plans are recommended under the Bidwell Park Master Management Plan. The NRC revives this discussion with a review of Natural Resource priorities for Lower Park (Trails priorities will be considered at a future meeting). Previous efforts considered public input on problems, needs, and attributes of the trail system and help with identifying the Park's landmarks and feedback on proposed zones for Bidwell Park. **Recommendation:** Provide input on proposed priorities.

3. **BUSINESS FROM THE FLOOR**

Members of the public may address the Committee at this time on any matter not already listed on the agenda, comments are limited to three minutes. The Committee cannot take any action at this meeting on requests made under this section of the agenda.

4. **ADJOURNMENT**

Adjourn to the next regular meeting on August 14 at 6:00 p.m. in the Conference Room 2, Chico Municipal Center building (421 Main Street, Chico, California).



Please contact the Park Division Office at (530) 896-7800 if you require an agenda in an alternative format or if you need to request a disability-related modification or accommodation. This request should be received at least three working days prior to the meeting.



Natural Resources Committee Report

Meeting Date 04/17/14

DATE: April 10, 2014
TO: Natural Resources Committee (NRC)
FROM: Dan Efseaff, Parks and Natural Resources Manager
SUBJECT: Introduction to the Caper Acres Renovation and Master Plan

Report in Brief

Due to aging infrastructure and the need for renovation, the BPPC included the renovation of Caper Acres in its 2013-2014 Work Plan. This is the fourth in a series of public meetings that will allow opportunities for public input on the project. Consultant and Staff will present a refined design, and a list of priorities and costs. Committee input will be used in the Master Renovation Plan. Once reviewed and recommended, the plan will be forwarded to the BPPC. **Recommendation:** 1) *Provide input on refined design and list of priorities, and 2) Direct Staff to prepare for the plan to be brought to the full BPPC.*

Background

The Bidwell Park and Playground Commission (BPPC) included the renovation of Caper Acres in its 2013-2014 Work Plan. In recent years, Park Division maintenance staff has devoted considerable time for repairs and daily cleanup of Caper Acres aging infrastructure. Since the October 10, 2013 kickoff meeting, the Natural Resource Committee has collected input for the Caper Acres Renovation and Master Plan.

Discussion

At previous meetings, staff laid out the overall process and began collecting public input. Public input has been an important component of the project and Staff, the consultant (Melton Design Group), and a CSUC class have collected information from Park visitors. The information helps develop a list of priorities, needs, and costs. The plan addresses improvements that lessen maintenance load, improve safety, and retain the unique character of Caper Acres. The priorities and costs will be used as part of a capital campaign (and seeking other funding sources) to improve the facility. For this meeting, Staff and the Consultant will provide the Natural Resource Committee with an update including:

1. Refine Conceptual Design and Plan (Task 2 - Develop a phased renovation plan that identifies all proposed improvements);
2. List Priorities and develop costs (Task 3 - Prioritize, provide costs, and suggested phases for improvements and repairs identified and selected in the process of developing the Plan);
3. Provide feedback on information on a matrix table for each structure that may help the BPPC and the public see priorities and opportunities.
4. Discuss and provide input on donation recognition strategies (all on a single donation wall vs some plaques on individual play structures for substantial donations).
5. Next Steps:
 - a. Develop Master Renovation Plan and Booklet.
 - b. Prepare materials for BPPC and Council consideration.
 - c. Outline fundraising strategy.

The project is meeting the timeline set out in October. Although more work needs to be completed, Staff recommends that the Committee forward the Master Renovation Plan and Booklet to the full BPPC. If approved by the BPPC and then by Council, Staff would then shift to develop funding and implementing the first priorities.

Attachments:

- A. Excerpts from Draft Master Plan and Booklet

Distribution:

BPPC Members
BPPC and NRC Meeting Distribution Lists



Caper Acres Renovation

Submitted to: **The City of Chico**, July 2, 2014

Submitted by:

MELTON DESIGN GROUP

Landscape Architects & Planners
309 Wall Street, Chico, CA 95928
www.meltondg.com p530.899.1616





- CIRCULATION PATH
- HIGH ACTIVITY USE AREA
- MEDIUM ACTIVITY USE AREA
- PASSIVE PLAY AREA WITH NATIVE GRASSES
- EDUCATIONAL AREA
- ELEMENT FOOTPRINT
- ↔ ACTIVE CIRCULATION



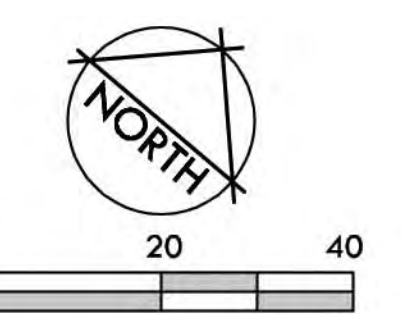
309 WALL STREET
CHICO, CA 95928
530.899.1616

2014-03-05 #2076

CAPER ACERS RENOVATION 2014

SITE ANALYSIS

"CREATING FUN FOR THE NEXT GENERATION"





309 WALL STREET
CHICO, CA 95928
530.899.1616

2014-07-02 #2076

CAPER ACERS RENOVATION 2014

PRELIMINARY MASTER PLAN

"CREATING FUN FOR THE NEXT GENERATION"

#1 BIRTHDAY RING 'A' THE SHIRE

- ANALYSIS**
- FENCE ROTTING / UNEVEN / DRAINAGE
- CONCEPTS**
- FIELD STONE WALL TO REPLACE FENCE
 - ENHANCE ROUND HOBBIT TYPE DOOR
 - LEVEL DECOMPOSED GRANITE SURFACE
 - ENHANCE EXISTING STONE WINDOW
 - LARGE MUSHROOMS, FLOWERS AND GRASS BLADES
 - LARGE INSECTS & BIRDS
 - MOUNDING IN GRASS
 - WOOD FORMED STAMPED CONCRETE

#2 CENTRAL PLAY OPEN SPACE

- ANALYSIS**
- ERODED GRASS
- CONCEPTS**
- CONSIDER SYNTHETIC TURF PLAY SURFACE
 - ADD SHADE TREES WITH 8" DIA SEAT WALLS
 - DIRECTIONAL SIGNAGE THROUGHOUT PARK

#3 BIRDCAGE

- ANALYSIS**
- BIRDCAGE FOOTING SHIFT WITH WATER TABLE
 - SLIDE JOINTS SHIFT - MAY NEED TO REPLACE
 - TUBE TO SLIDE WOBBLES
 - DECK FOOTING ROT
- CONCEPTS**
- REPLACE WOOD WITH STEEL STRUCTURE
 - OPEN VIEW TO REST OF PLAYGROUND
 - CONCRETE SEAT WALL AROUND WOOD CHIPS / REDUCE IN SIZE
 - SMALL AMPHITHEATER SEATING PART OF SEAT WALL
 - TALK TUBE BETWEEN MONKEY FACE & CROOKED HOUSE
 - ADD STAIRS FROM FALL MATERIAL OR LOW DECK

#4 ENTRANCE

- ANALYSIS**
- ADDRESS EASY CLIMBING PARTS OF BLOCK
 - NEED COHESIVE ENTRANCE
 - ENTRY ARCH - GRIND TO MAKE CORNERS ROUNDED
 - CHAIN POST BARRIER - HAZARD / MAINT. PROBLEM
 - BETTER ENTRY PATHS - D.G. WITH STEEL EDGE
 - CRUSHED BASALT (BLACK) OR CONCRETE WOOD FORMS
 - LIGHTER COLOR MATCH EXISTING
- CONCEPTS**
- FLAG POLES
 - REALIGN ENTRY PATH
 - ENHANCE MOAT, COBBLE SWALE, BUNCH GRASSES
 - HISTORIC INTERPRETIVE TIMELINE
 - NATIVE REVEGETATION - KEEP LOW / LINE OF SITE (2')
 - ADD PICNIC TABLES
 - REPLACE CHAIN LINK WITH DECORATIVE WOOD FENCE
 - INCREASE SIZE OF DONOR CIRCLE / ADD SEAT WALLS
 - ADD CONCRETE BRIDGE (DECORATIVE WOOD STAMPED)
 - ADD PATH AROUND INSIDE FENCE LINE WITH INTERPRETIVE PANELS
 - ADD KIOSK
 - ADD SPLIT RAIL FENCE
 - ADD SUNFLOWER OBJECTS

#5 THE ARRIVAL

- ANALYSIS**
- ADDRESS EASY CLIMBING PARTS OF BLOCK
- CONCEPTS**
- 5 PANELS ON WALL DESCRIBING HISTORY AND ALL INVOLVED TO DATE
 - FUTURE PANELS FOR FUTURE EXPANSION

#6 PARKING LOT

- ANALYSIS**
- NEED MORE EFFICIENT USE OF EXISTING LAYOUT
 - SHAPE IS AWKWARD
 - ADDRESS BUS ACCESS / DROP OFF
 - ONE WAY NOT EASILY RECOGNIZED
 - SIGN BLENDS TOO WELL, CREATE MORE PLAYFUL
 - SUMMER / SPRING - PARKING LOT FULL ALL WEEKEND
- CONCEPTS**
- LAYOUT FENCE AND PLANTERS TO BETTER DIRECT TRAFFIC
 - SIGNAGE - BUS DROP OFF ONLY, PARK ELSEWHERE
 - PROVIDE ENTRY MONUMENT OF CAPER ACERS CHARACTERS INVITING CHILDREN TO PLAY

#7 NICO PROJECT

- ANALYSIS**
- POURED IN PLACE FALL MATERIAL DIFFICULT TO MAINTAIN
 - SUB-GRADE NOT COMPACTED WELL
 - AREA IS A LITTLE LOW
- CONCEPTS**
- RETAIN AS IS FOR LIFE OF STRUCTURE
 - ADD SHOE CLEANER MAT
 - ADD SHADE TREES
 - ADD SEATING
 - ADD PALM TREE W / MISTERS PER ORIGINAL DESIGN

#8 RESTROOM

- ANALYSIS**
- NOT STRUCTURALLY SOUND
 - HALLWAYS NOT NECESSARY
 - EASIER MAINTAIN
 - NEEDS TO BE HOSEABLE
 - MORE STORAGE
 - NUMBER OF STALLS OK (4)
 - NEEDS GOOD LIGHT, VENTILATION
- CONCEPTS**
- REPLACE WITH CONCRETE OR CMU BLOCK
 - INCREASE SIZE FOR STORAGE
 - INCLUDE CHANGING TABLES
 - KEEP CASTLE THEME OR CHANGE
 - PROVIDE MAINTENANCE ACCESS AT THIS LOCATION
 - ADD SMALL AMPHITHEATER STAGE
 - CHALK BOARD WALL

SOUTH PARK DRIVE

(E) PATH

#9 SAND PLAY (HUMPTY-DUMPTY)

- ANALYSIS**
- SAND NEEDS CLEANING DAILY
- CONCEPTS**
- ADD HUMPTY DUMPTY STAGES / STORY LINE ? (CRACKED EGG / ALL THE KINGS HORSES ...)
 - FOSSIL FINDS - PRECAST CONCRETE
 - LARGE BOULDER IN MIDDLE (PLAY TABLE)
 - PRE-CAST CONCRETE LOGS AND MUSHROOMS IN LANDSCAPE
 - ADD WATER ?
 - SEAT WALL ?
 - RESTORE HUMPTY DUMPTY AND WALL PAINT
 - ADD ADULT AND KID SIZED TABLES

#10 SWINGS

- ANALYSIS**
- NEED MORE AND NEED TO BE ACCESSIBLE
 - WOOD WALL DIFFICULT TO MAINTAIN
- CONCEPTS**
- REPLACE WOOD CHIP RETAINING WALL WITH CONCRETE SEAT WALL
 - MIX OF TODDLER AND REGULAR SWINGS
 - TIRE SWING
 - UNIQUE OPTIONS
 - ADA ACCESSIBLE SWING
 - MERRY GO ROUND
 - SEAT WALL ALL AROUND

#11 CASTLE

- ANALYSIS**
- (E) DRAINAGE GOOD
 - WOOD DECKS AND CRAWL SPACE PROBLEM IN PAST
 - WALL FOOTINGS EXPOSED
- CONCEPTS**
- ENHANCE ENTRY - FLAGS, MOAT WITH TROLL AND ALLIGATOR (PRE-CAST CONCRETE)
 - SITTING / JUMPING STONES FRAME ENTRY
 - PRE-CAST CONCRETE GOBLINS & ANIMALS AROUND CASTLE
 - DRAGON SLIDE, PRE-CAST CONCRETE
 - DECKS TO BE METAL MESH PANELS
 - TRIPLE SLIDE IN
 - NEW CONCRETE BRIDGE
 - ZIP LINE AND BALANCE BEAM ATTACHMENTS
 - TOWER ADD - TWO STORY TUBE SLIDE
 - COVER EXPOSED FOOTINGS
 - WOOD CHIP INTERIOR FALL MATERIAL
 - SYNTHETIC GRASS FALL MATERIAL OUTSIDE WALLS (BLUE COLORED AT MOAT)
 - PROVIDE ACCESSIBLE ELEMENTS
 - BALANCE BEAMS
 - ADD ACCESSIBLE MUSIC CHIMES

#12 SWISS CHEESE AREA

- ANALYSIS**
- RETAIN / GREAT FEATURE / EASY TO MAINTAIN
 - RETAIN PICNIC TABLES (POPULAR SHADED SEATING AREA FOR PARENTS)
- CONCEPTS**
- ADD 3 BLIND NICE COLORED (PRE-CAST CONCRETE)
 - PAVER BLOCK MAZE TO CHEESE
 - ADD TWO PICNIC TABLES

#13 CROOKED HOUSE

- ANALYSIS**
- DRY ROT PRESENT
 - ROOF LEAKS
 - FALL MATERIAL CAN'T TOUCH WOOD
 - NOT ABLE TO SEE INSIDE / SECURITY PROBLEM
- CONCEPTS**
- REPLACE WITH TWO CROOKED HOUSES WITH ROPE LINED CABLE BRIDGE
 - OPEN AIR STRUCTURE LIKE BIRDCAGE
 - HANDICAP ACCESSIBLE DOUBLE SLIDE
 - SECOND STORY SLIDE
 - CLIMBING WALL ON OUTSIDE
 - ADD CROOKED MAN, CAT AND MOUSE FROM (PRE-CAST CONCRETE)
 - WITH NURSERY RHYME INTERPRETIVE PANEL
 - SPEAKING TUBES
 - BIRD WATCHING VIEWER AND INTERPRETIVE PANEL
 - CONCRETE SEAT WALLS WALLS TO RETAIN WOOD CHIPS
 - TALK TUBE BETWEEN MONKEY FACE & BIRDCAGE

#14 BIRTHDAY RING 'B' ROBIN HOOD

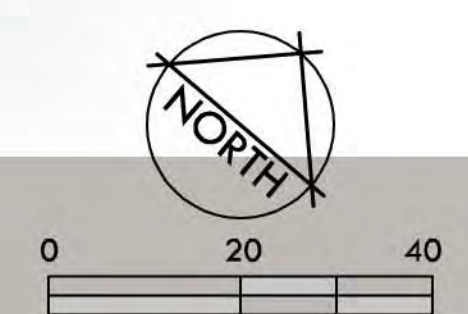
- ANALYSIS**
- (E) STRUCTURE WORKS WELL
 - NEED TRASH CAN
 - KEEP TABLES MOVEABLE, BUT ADD SEATING - (NOT MUCH ROOM)
 - ADD BENCHES TO WOOD FENCE
- CONCEPTS**
- REPLACE WOOD FENCE WITH MIX OF DECORATIVE STEEL / CONCRETE SEAT WALLS
 - ROBIN HOOD THEME WITH FACADE CANOPY, THRONE SEAT WITH MAID MARIAN
 - ADD LARGE ARROW INTO ENTRY DESIGN
 - REWARDS ON TREES
 - ADD BULK TO COLUMN BASES CREATING ENTRY
 - ADD DRY CREEK WITH LOGS

#15 MINING TUNNELS

- ANALYSIS**
- DIRT MOUND ERODES / DIFFICULT TO MAINTAIN
 - TUNNELS ARE SECURITY HAZARD / DIFFICULT TO MAINTAIN
- CONCEPTS**
- REPLACE WITH NEW MONKEY FACE/ NORTH & SOUTH RIM CLIMBING STRUCTURE
 - GUNITE / BASALT ROCK UPPER PARK THEME
 - MONKEY FACE CLIMBING WALL, NORTH RIM AND SOUTH RIM CLIMBING ROUTES
 - MULTIPLE ROPE (STEEL CABLE) CLIMBING STRUCTURES
 - MOVE PATH TO CREATE MORE ROOM
 - RAISE +4' (SLOPE TO BE ACCESSIBLE)
 - SLIDE DOWN HILL
 - ZIP-LINE DOWN HILL ON OTHER SIDE OF PATH (DOUBLE) TO ROBIN HOOD LAIR
 - BALANCE BEAM
 - ROPE, AGILITY AND STRENGTH ELEMENTS
 - ADD SHADE TREES
 - TALK TUBE BETWEEN CROOKED HOUSE & BIRDCAGE

#16 ROBIN HOODS LAIR

- ANALYSIS**
- UNDER UTILIZED AREA
 - DIFFICULT TO MAINTAIN
- CONCEPTS**
- TWO ZIP LINE TO RACE INTO ROBIN HOODS LAIR
 - SITTING LOGS AND END OF ZIP LINE RUN
 - STATUES OF ROBIN HOODS CARICATURES
 - SURROUNDED WITH NATIVE NO MOW GRASSES
 - REMOVE EXISTING FENCE AND RE-ALIGN NEW IRON FENCE





MONKEY FACE PLAN VIEW



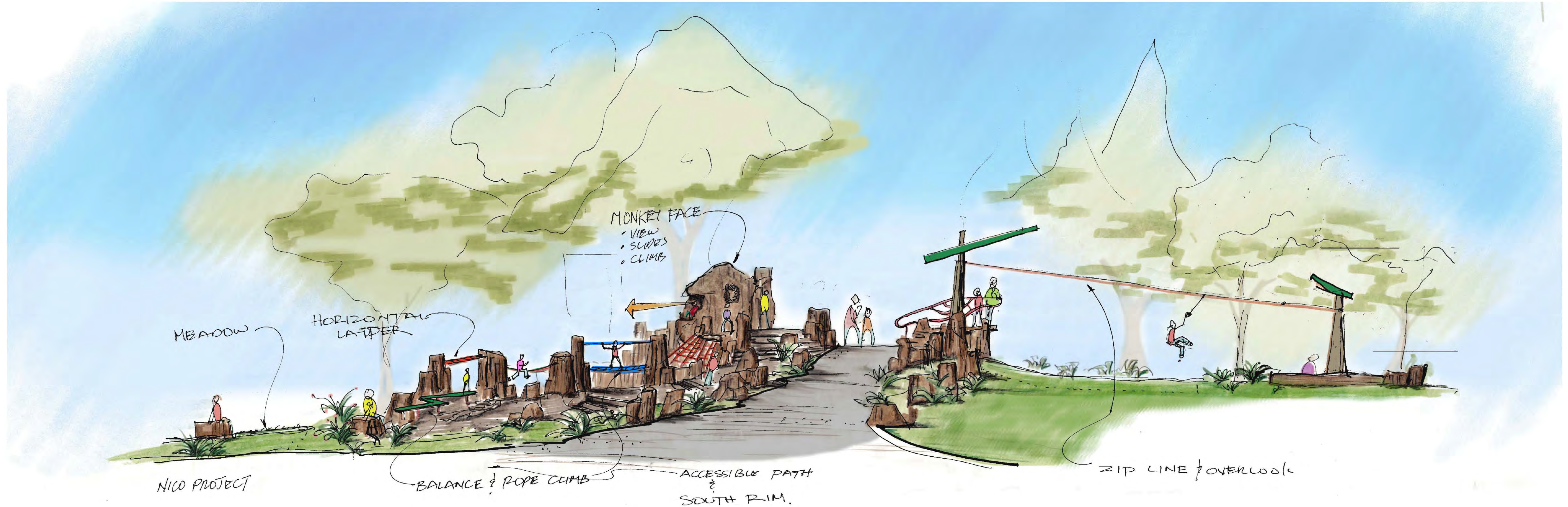
MONKEY FACE ROCK

Monkey Face

The Monkey Face play area consists of a variety of custom play structures and obstacles. The play area playfully mimics one of the local hiking hot spots in upper Bidwell Park known as 'Monkey Face'. The proposed site will be constructed of granite and basalt rocks to form a unique structure with small climbing walls, 'north rim and south rim' climbing routes, rope climbing obstacles, and slides. The inside of the 'Monkey Face' will be open offering views of the Caper Acres and be ADA accessible from the path that loops around the entire park.

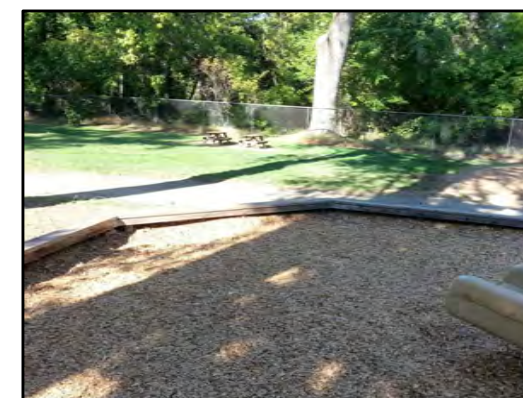
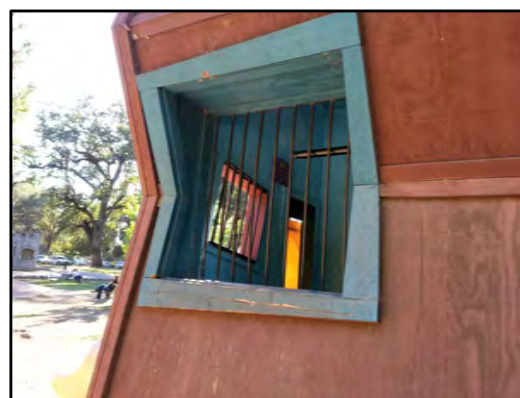
Robin Hood's Escape - Zip Lines

The Robin Hood Zip Lines are proposed behind the 'Monkey Face' play area and will be accessible from the ADA path. Proposed are two 40' long Zip Lines with landing platforms and fall material the Zip Lines end at Robin Hood's Lair.





- OPEN AIR LIKE BIRDCAGE
- ROOF LEAKS
- PROBABLY REBUILD BUT MAKE SIMILAR
- STRUCTURE - DRY ROT
- FALL MATERIAL CAN'T TOUCH WOOD
- ADD BIRD WATCHING VIEWER AND INTERPRETIVE PANEL
- MORE DURABLE WALLS TO RETAIN WOOD CHIPS BETTER / SEATWALLS
- ADD SPEAKING TUBES



#12 CROOKED HOUSE

EXISTING CONDITIONS

300 WALL STREET
CHICO, CA 95928
530.899.1616

2014-05-23 #2076



COST ESTIMATE

DESCRIPTION	QTY	COST	TOTAL
A. ---			
o ---	--	--	--
o ---	--	--	--
TOTAL			--

ANALYSIS

- DRY ROT PRESENT
- ROOF LEAKS
- FALL MATERIAL CAN'T TOUCH WOOD
- NOT ABLE TO SEE INSIDE / SECURITY PROBLEM

CONCEPTS

- REPLACE WITH TWO CROOKED HOUSES WITH ROPE LINED CABLE BRIDGE
- OPEN AIR STRUCTURE LIKE BIRDCAGE
- HANDICAP ACCESSIBLE DOUBLE SLIDE
- SECOND STORY SLIDE
- CLIMBING WALL ON OUTSIDE
- ADD CROOKED MAN, CAT AND MOUSE FROM (PRE-CAST CONCRETE) WITH NURSERY RHYME INTERPRETIVE PANEL
- SPEAKING TUBES
- BIRD WATCHING VIEWER AND INTERPRETIVE PANEL
- CONCRETE SEAT WALLS WALLS TO RETAIN WOOD CHIPS



- TWO TOWER TYPE ENTRY TO "CAVE" BUT NO COVER
- HAVE WEB CLIMBER, BOULDERS LIKE RIVERBEND PARK
- GUNITE BEAR HOLE / MONKEY FACE THEME
- BIGGER TUNNELS / SEE THROUGH
- TREE TUNNEL (PRE-CAST)
- SLIDES DOWNHILL



#14 THE TUNNELS

EXISTING CONDITIONS

309 WALL STREET
CHICO, CA 95928
530.899.1616

2014-05-23 #2076

COST ESTIMATE

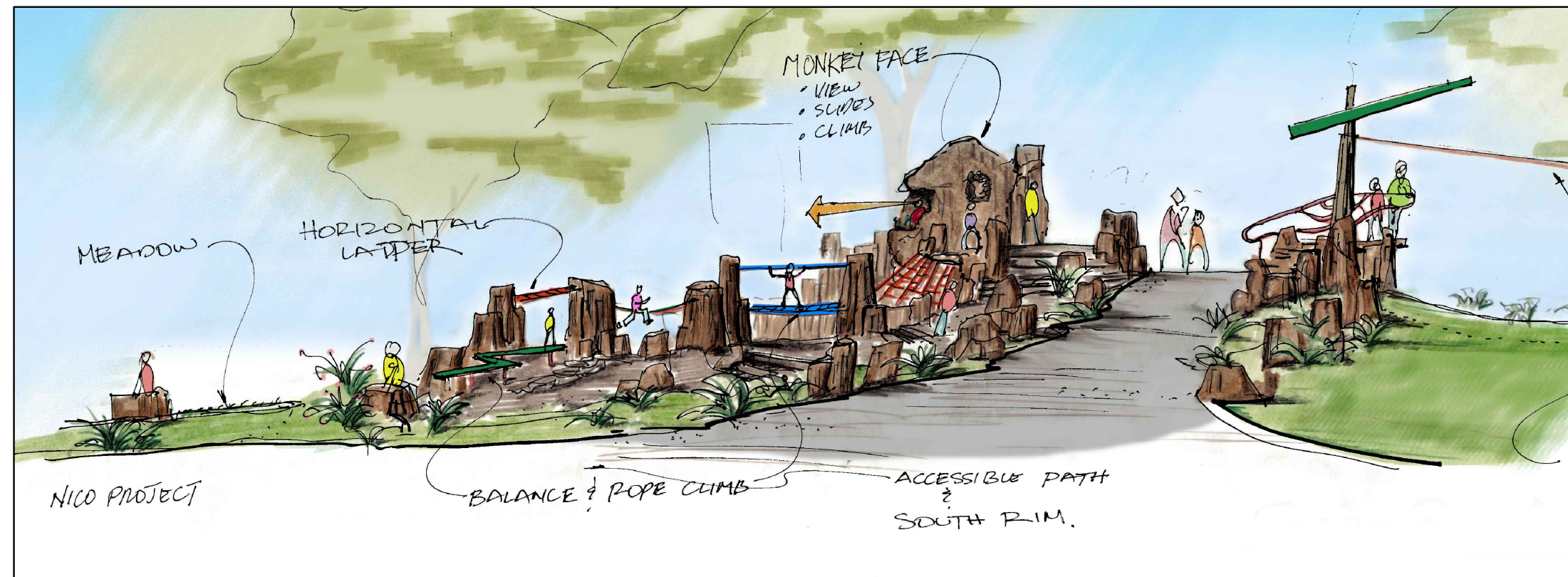
DESCRIPTION	QTY	COST	TOTAL
A. ---			
o ---	--	--	--
o ---	--	--	--
TOTAL			--

ANALYSIS

- DIRT MOUND ERODES / DIFFICULT TO MAINTAIN
- TUNNELS ARE SECURITY HAZARD / DIFFICULT TO MAINTAIN

CONCEPTS

- REPLACE WITH NEW STRUCTURE
- GUNITE / BASALT ROCK UPPER PARK THEME
MONKEY FACE CLIMBING WALL, NORTH RIM AND SOUTH RIM CLIMBING ROUTES
- MULTIPLE ROPE (STEEL CABLE) CLIMBING STRUCTURES
- MOVE PATH TO CREATE MORE ROOM
- RAISE +4' (SLOPE TO BE ACCESSIBLE)
- SLIDE DOWN HILL
- ZIP-LINE DOWN HILL ON OTHER SIDE OF PATH (DOUBLE) TO ROBIN HOOD LAIR
- BALANCE BEAM
- ROPE, AGILITY AND STRENGTH ELEMENTS
- ADD SHADE TREES



#14 MONKEY FACE



309 WALL STREET
CHICO, CA 95928
530.899.1616

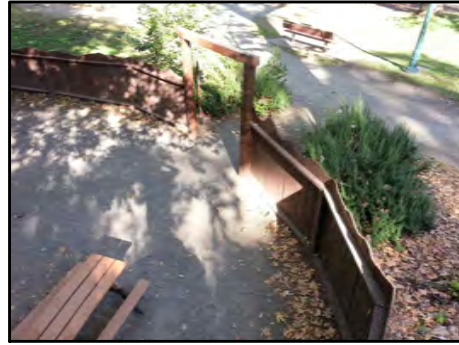
2014-07-01 #2076

"CREATING FUN FOR THE NEXT GENERATION"

CONCEPTUAL DESIGNS AND IMPROVEMENTS

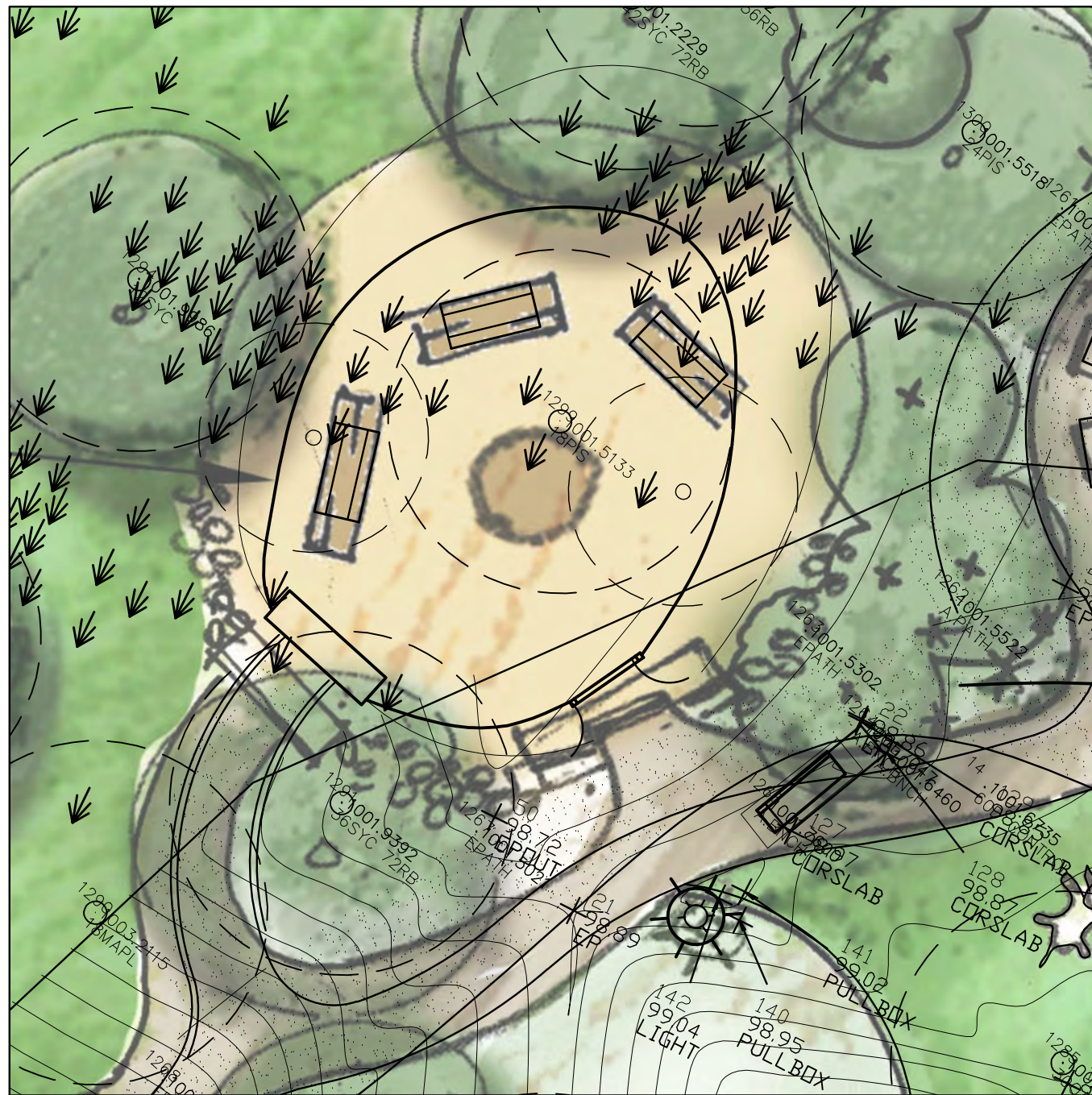


- FENCE ROTTING
- RUIN TYPE WALL TO REPLACE FENCE
- ENHANCE ROUND HOBBIT TYPE DOOR
- STAMPED CONCRETE WOOD FLOOR? (PROBABLY JUST D.G)
- KEEP IN MIND EXISTING DRAINAGE



#1 BIRTHDAY RING 'A'

EXISTING CONDITIONS



COST ESTIMATE

DESCRIPTION	QTY	COST	TOTAL
A. ---			
o ---	--	--	--
o ---	--	--	--
TOTAL			--

CONCEPTS

- ALICE IN WONDERLAND THEME
- FIELD STONE WALL TO REPLACE ENTRY WALL
- ENHANCE ROUND HOBBIT TYPE DOOR
- LEVEL DECOMPOSED GRANITE SURFACE
- ENHANCE EXISTING STONE WINDOW

#1 BIRTHDAY RING 'A'

"CREATING FUN FOR THE NEXT GENERATION"

CONCEPTUAL DESIGNS AND IMPROVEMENTS



2014-05-23 #2076



DATE: 06/27/14
TO: Natural Resource Committee
FROM: Dan Efseaff, Parks and Natural Resources Manager
SUBJECT: Natural Resource Management Plan and Trails Plan Priorities for Lower Bidwell Park

Report in Brief

This item continues public input in updating Bidwell Park's Natural Resources Management and Trail Plans. The plans are recommended under the Bidwell Park Master Management Plan. The NRC revives this discussion with a review of initial priorities for Lower Park. Previous efforts considered public input on problems, needs, and attributes of the trail system and help with identifying the Park's landmarks and feedback on proposed zones for Bidwell Park.

Recommendation: *Reintroduce process and provide input on proposed priorities.*

Background

In 2012, the Natural Resource Committee made progress on input on elements needed to update Bidwell Park's Natural Resources Management Plan and on the development of a Trails Plan for the Park. The Committee reviewed drafts of management units and a trails inventory for Bidwell Park. The proposed management units will assist park staff in communicating goals, tracking progress and provide a more effective description of areas to park crew, volunteers and emergency responders. Staff anticipates several meetings are needed to consider various elements of the Natural Resource Management and Trails Plan. Previous meetings outlined our approach to establishing management units and the trails inventory. Management Units provide a basis on which to discuss needs in each area and needs for each region of the park. Progress was halted with staff layoffs in 2013.

Discussion

This agenda item restarts the NRC effort with public input initial objectives.

1. As per the Bidwell Park Master Management Plan (BPMMP), the Trails Plan will serve as a guide for future trail maintenance, improvement, construction, and closure within Bidwell Park. It will also help prioritize budget expenditures and ensure that future improvements are consistent with the vision, goals, and objectives set forth in the BPMMP (EDAW 2008). The Trails Plan helps ensure that any work implemented is consistent with the Vision for Bidwell Park as well as the goals and objectives set forth in the BPMMP.
2. The Natural Resource Management Plan (NRMP) lays out a framework for resource management in Bidwell Park that supports the goals and objectives of the BPMMP. It provides information on how to achieve the goals and objectives provided in the BPMMP and supplement the implementation strategies and guidelines with more specific technical information. The NRMP is designed to be a living document that can be modified and expanded in the future as more is learned about the Park's resources, and as more funding may be available. In its current version, the NRMP addresses three important natural resource management topics: management of the Park's oak woodlands, invasive plant management, and fire management.

The BPMMP lays out a number of goals and objectives for the Park related to natural resources and the NRMP will provide a blueprint or workplan on how to carryout those goals. The BPMMP provided a suggested process for the City to follow during further development of this document:

1. Review natural resource goals and objectives for Bidwell Park;
2. Develop NRMP components for additional natural resources (e.g., riparian areas, wetlands, soils), as needed to support natural resource goals and objectives;
3. Conduct biological (e.g., natural communities, sensitive or priority species populations), physical, and cultural resource inventory, assessments and mapping, using existing information and acquiring new data to fill data gaps;
4. Identify management opportunities and constraints, relative to overall goals and objectives, presented by current resource conditions;

5. Develop and prioritize management guidelines and recommendations for additional natural resources to include in the NRMP and refine guidelines and recommendations for current resources covered in the NRMP, if needed; and
6. Develop an adaptive management protocol to guide implementation of management actions.

As EDAW (2008) notes, “Based on the NRMP, management actions may be developed and implemented that are consistent with the NRMP guidelines and recommendations as well as goals and objectives for natural resource and other Park resources, as provided in the BPMMP. The actions should be guided by the adaptive management principles discussed in Section 1.5, and should consider potential effects on sensitive resources and opportunities for incorporating education and public involvement.”

NRC discussion will center on the following items related to Lower Bidwell Park 1) Description of Management Units and 2) NRMP Work-plan priorities. Staff recommends that the focus for this introduction remain on the larger units (Lower, Middle, Upper). Future discussions may refine objectives for individual units. Here are a list of priorities for Lower Park. More focused objectives may be necessary for each management unit

1. Prioritize invasive woody plant removal in Lower Park, using a combination of areal and species focused strategies (i.e. meaning that there may be approaches where volunteers search and remove particular species and others more opportunistic where we may be working in an area and they will remove all non-native plants)

The following species are of greatest concern:

 - Ailanthus/tree-of-heaven (*Ailanthus altissima*),
 - black locust (*Robinia pseudoacacia*)
 - Catalpa
 - cherry plum (*Prunus cerasifera*)
 - Chinese pistache, especially female trees (*Pistachia chinensis*),
 - edible fig (*Ficus carica*),
 - English and Black walnut (*Juglans spp*),
 - hawthorn (*Crataegus monogyna*, *Crataegus laevigata*),
 - Mediterranean hackberry (*Celtis australis*),
 - olive (*Olea europaea*)
 - Pyracantha, firethorn (*Pyracantha angustifolia*, *P. crenulata*, *P. coccinea*)
 - silver maple (*Acer saccharinum*),
2. Trim and elevate vegetation to maintain sight lines and lessen the opportunities for hidden homeless encampments or other illicit activity in selected areas.
3. Reduce by 50% the area occupied by Himalaya blackberry (*Rubus armeniacus*), ivy (English ivy, Algerian ivy, *Hedera helix*, *H. canariensis*) and big periwinkle/vinca (*Vinca major*) to allow for oak regeneration
 - Map lower park locations,
 - Start with a containment approach throughout Lower Park (remove climbing vines to reduce harm to nesting birds and trees, mow blackberry edges, trim/roll vine edge, etc.).
 - Identify Management Units with Ivy and treat from the outer areas inward.
 - For areas targeted for removal assess need for understory replanting.
4. Promote a very aggressive eradication approach to yellow star thistle (*Centaurea solstitialis*) and puncturevine (*Tribulus terrestris*).
5. Continue to monitor and respond to non-native plants that have received attention in the past and have been eradicated or now present in the Park at relatively low numbers. For example, Bladder Senna (*Colutea arborescens*), arundo, pampasgrass (*Cortaderia selloana*), perennial pepperweed (*Lepidium latifolium*), Japanese privet (*Ligustrum japonicum*), common pokeweed (*Phytolacca Americana*) have all received past treatment and future efforts should maintain that progress).
6. Develop restoration and implementation plans for the following areas:
 - Woodland Avenue – with goals to 1) restore native trees and other plants, 2) remove invasive, 3) replace fencing, 4) improve safety of roadway and ease maintenance.
 - Lost Park – This is identified in part as a BPPC workplan goal.
 - Eucalyptus Grove – Remove and restore native plants.
 - Deer Pen - Remove fig and other invasive woody plants from the deer pen area.
7. Manage mowing to minimize the seeding of annual grasses such as foxtail barley and rigput brome; and begger ticks along roadways, trails, and other areas.
8. Examine park areas (especially entrances and landscaped areas) to replace non-native plants with native plants and examine hard to manage costly areas with natives (some demonstration areas have already been established, where grass has been replaced with shrubs, grasses, and sedges).

9. Remove all small woody non-natives (the ones below the power lines) and priority non-native herbaceous plants along the Vallombrosa Corridor and properly cut native plants to improve ability to mow, parking options, increase visibility, and reduce fire hazard. In addition, work with the utilities to see if they are interested to partner in the removal (rather than pruning), non-native woody species.
10. Develop an educational campaign and work with neighbors to promote awareness of and to remove invasive horticultural plants from the park border (and to encourage the planting of native plants). Issue letters (and the "Don't plant a pest" brochure), coordinate on removal of vegetation that may be growing over fences and encroaching into the Park, and develop means to prevent regrowth.
11. Research methods (herbicide, tarping, repeated mowing, and cutting and bagging the berries, etc) to effectively eradicate "Italian Lords and Ladies" (*Arum italicium*).
12. For each project (>1 ac) or effort on a species, develop a brief plan to address treatment, disposal, follow-up, restoration, etc.
13. Continue to apply Best Management Practices (BMPs) to Park operations and explore whether some measures need to be shared with the public.

The workplan objectives related to trails will be introduced at a future meeting.

Attachments: None.

Distribution: BPPC and trail user email list-serve.

Table 1. Description of Management Units, Lower Bidwell Park.

Management Unit	Sub-Unit Name	Sub-Unit Id	Description	Infrastructure	Vegetation Community
Lost Park	Lost Park North	LP-01A	Bound by bridges (Camellia Way and Esplanade). Borders backyards and Big Chico Creek (south).	Storm sewers drain to creek	Valley Oak Riparian Forest (100%)
	Lost Park South	LP-01B	Bound by bridges (Camellia Way and Esplanade). Borders downtown parkings lots and buildings and Big Chico Creek (north).	Storm sewers drain to creek	Valley Oak Riparian Forest (100%)
Annie's Glen and Camellia Way	Camellia Way	LP-02A	Bound by bridges (Camellia Way and Pine) Borders Vallambrosa on the north.	Pedestrian bridge, irrigation, picnic sites.	Cottonwood Willow Riparian Forest (100%)
	Annie's Glen	LP-02B	Bound by bridges (Camellia Way and Pine) Borders buildings on the south.	Bike path, lights, pedestrian brige, pedestrian tunne.	Cottonwood Willow Riparian Forest (100%)
Mangrove/ 4th Street Entrance	CARD Park	LP-03A	Bound by Vallambrosa, the CARD center, and Pine St.	Picnic sites, irrigation.	Cottonwood Willow Riparian Forest (100%)
	4th Street Entrance	LP-03B	Bound by Cypress St/ Pine St on the west, the north by Big chico Creek, and ends at the east where the bike path meets South Park Drive.	Pedestrian tunnel, bike path, lights, park entrance, storm drain, road.	Cottonwood Willow Riparian Forest (100%)
One Mile	One Mlle	LP-04	Bound on the west where S Park Dr begins. The north is bound by Vallambrosa Way/ Vallambrosa Ave until Peterson Memorial. Then the creek until the campfire ring. Then S Park Dr until the exit. The south side bound by Woodland Ave.	Roads, Sycamore pool, restooms, sewer lines, lighting, picnic tables, irrigated lawns, bike paths, pedestrian bridge, Caper Acres, campfire circle, baseball field.	Valley Oak Riparian Forest (50%), Cottonwood Willow Riparian Forest (50%)
Vallombrosa West	Vallombrosa West	LP-05	Bound by North One mile parking lot on the west, the north by Vallambrosa Ave, the east by Highway 99, and the south by the creek.	Pedestrian bridge, Peterson Memorial, bike path, picnic tables.	Cottonwood Willow Riparian Forest (60%), Valley Oak Riparian Forest (40%)
East of Caper Acres	East of Caper Acres	LP-06	Bound on the west by the eastern side of Caper Acres, the north by the creek, the east by Highway 99, and the south by Woodland Ave.	Cement bike path, South Park Drive.	Valley Oak Riparian Forest (60%), Cottonwood Willow Riparian Forest (40%)

Management Unit	Sub-Unit Name	Sub-Unit Id	Description	Infrastructure	Vegetation Community
Vallombrosa Central	Vallombrosa Central	LP-07	Bound by Highway 99 on the west, the north by Vallombrosa Way, the east ends where the vita course trail intersects Peterson Memorial just east of picnic site 33. The south is bordered by the creek.	Peterson Memorial, Vita Course Trail, Vita Course Stations, and picnic tables.	Valley Oak Riparian Forest (70%), Cottonwood Willow Riparian Forest (30%)
Southeast 99	Southeast 99	LP-08	Bound by Highway 99 on the west, the north by the creek, the east by Cedar Grove, and the south by the neighborhood that follows East 8th Street	South Park Drive and picnic sites.	Cottonwood Willow Riparian Forest (100%)
Scout Island	Madrone West	LP-09A	Bound by on the west where the vita course trail meets Peterson Memorial east of site 33, the north by Vallombrosa Ave, the east by the madrone bike path entrance, and the south by the creek.	Peterson Memorial, Vita Course Trail and Stations, bike paths, picnic sites.	Cottonwood Willow Riparian Forest (55%), Valley Oak Riparian Forest (35%)
	Madrone East	LP-09B	Bound by the west at the madrone bike path entrance, the north by Vallombrosa Ave, the east by the Walnut Orchard, and the south by the creek.	Peterson Memorial, Bike bath, picnic sites and pedestrian bridge.	Valley Oak Riparian Forest (80%), Cottonwood Willow Riparian Forest (20%)
Cedar Grove	Cedar Grove	LP-10	Bordered on the west by Park View School, the north by Big Chico Creek, east by the deer pens, and south by East 8th Street.	Restrooms, World of Trees, parking lots, reservation area, nature center, bears lair, deer pens.	Valley Oak Riparian Forest (66%), Cottonwood Willow Riparian Forest (34%)
South Park Drive	South Park Drive	LP-11	Mainly road, South Park Drive east of the deer pens on the south side of the creek. East edge is where South Park Drive exits to Centennial.	Road, picnic sites, storm sewers, power lines, light poles.	Cottonwood Willow Riparian Forest (100%)
Orchard	Orchard	LP-12	Walnut Orchard. Bordered by Vallombrosa, Peterson Memorial, and a dirt trail on the west end of the Walnut Orchard.	Walnut Orchard, drinking fountain.	Orchard (90%), Cottonwood Willow Riparian Forest (10%)
Manzanita and Centennial	Manzanita North	LP-13A	Bike path on south side of Vallombrosa between Manzanita and Peterson Memorial.	Bike path.	Cottonwood Willow Riparian Forest (100%)
	Manzanita South	LP-13B	The bike path north of Centennial between South Park Drive and Manzanita.	Bike path, powerlines, picnic sites.	Cottonwood Willow Riparian Forest (100%)

Management Unit	Sub-Unit Name	Sub-Unit Id	Description	Infrastructure	Vegetation Community
Lost Park	Lost Park North	LP-01A	Bound by bridges (Camellia Way and Esplanade). Borders backyards and Big Chico Creek (south).	Storm sewers drain to creek	Valley Oak Riparian Forest (100%)
	Lost Park South	LP-01B	Bound by bridges (Camellia Way and Esplanade). Borders downtown parkings lots and buildings and Big Chico Creek (north).	Storm sewers drain to creek	Valley Oak Riparian Forest (100%)
Annie's Glen and Camellia Way	Camellia Way	LP-02A	Bound by bridges (Camellia Way and Pine) Borders Vallambrosa on the north.	Pedestrian bridge, irrigation, picnic sites.	Cottonwood Willow Riparian Forest (100%)
	Annie's Glen	LP-02B	Bound by bridges (Camellia Way and Pine) Borders buildings on the south.	Bike path, lights, pedestrian brige, pedestrian tunne.	Cottonwood Willow Riparian Forest (100%)
Mangrove/ 4th Street Entrance	CARD Park	LP-03A	Bound by Vallambrosa, the CARD center, and Pine St.	Picnic sites, irrigation.	Cottonwood Willow Riparian Forest (100%)
	4th Street Entrance	LP-03B	Bound by Cypress St/ Pine St on the west, the north by Big chico Creek, and ends at the east where the bike path meets South Park Drive.	Pedestrian tunnel, bike path, lights, park entrance, storm drain, road.	Cottonwood Willow Riparian Forest (100%)
One Mile	One Mlle	LP-04	Bound on the west where S Park Dr begins. The north is bound by Vallambrosa Way/ Vallambrosa Ave until Peterson Memorial. Then the creek until the campfire ring. Then S Park Dr until the exit. The south side bound by Woodland Ave.	Roads, Sycamore pool, restooms, sewer lines, lighting, picnic tables, irrigated lawns, bike paths, pedestrian bridge, Caper Acres, campfire circle, baseball field.	Valley Oak Riparian Forest (50%), Cottonwood Willow Riparian Forest (50%)
Vallombrosa West	Vallombrosa West	LP-05	Bound by North One mile parking lot on the west, the north by Vallambrosa Ave, the east by Highway 99, and the south by the creek.	Pedestrian bridge, Peterson Memorial, bike path, picnic tables.	Cottonwood Willow Riparian Forest (60%), Valley Oak Riparian Forest (40%)
East of Caper Acres	East of Caper Acres	LP-06	Bound on the west by the eastern side of Caper Acres, the north by the creek, the east by Highway 99, and the south by Woodland Ave.	Cement bike path, South Park Drive.	Valley Oak Riparian Forest (60%), Cottonwood Willow Riparian Forest (40%)

Management Unit	Sub-Unit Name	Sub-Unit Id	Description	Infrastructure	Vegetation Community
Vallombrosa Central	Vallombrosa Central	LP-07	Bound by Highway 99 on the west, the north by Vallombrosa Way, the east ends where the vita course trail intersects Peterson Memorial just east of picnic site 33. The south is bordered by the creek.	Peterson Memorial, Vita Course Trail, Vita Course Stations, and picnic tables.	Valley Oak Riparian Forest (70%), Cottonwood Willow Riparian Forest (30%)
Southeast 99	Southeast 99	LP-08	Bound by Highway 99 on the west, the north by the creek, the east by Cedar Grove, and the south by the neighborhood that follows East 8th Street	South Park Drive and picnic sites.	Cottonwood Willow Riparian Forest (100%)
Scout Island	Madrone West	LP-09A	Bound by on the west where the vita course trail meets Peterson Memorial east of site 33, the north by Vallombrosa Ave, the east by the madrone bike path entrance, and the south by the creek.	Peterson Memorial, Vita Course Trail and Stations, bike paths, picnic sites.	Cottonwood Willow Riparian Forest (55%), Valley Oak Riparian Forest (35%)
	Madrone East	LP-09B	Bound by the west at the madrone bike path entrance, the north by Vallombrosa Ave, the east by the Walnut Orchard, and the south by the creek.	Peterson Memorial, Bike bath, picnic sites and pedestrian bridge.	Valley Oak Riparian Forest (80%), Cottonwood Willow Riparian Forest (20%)
Cedar Grove	Cedar Grove	LP-10	Bordered on the west by Park View School, the north by Big Chico Creek, east by the deer pens, and south by East 8th Street.	Restrooms, World of Trees, parking lots, reservation area, nature center, bears lair, deer pens.	Valley Oak Riparian Forest (66%), Cottonwood Willow Riparian Forest (34%)
South Park Drive	South Park Drive	LP-11	Mainly road, South Park Drive east of the deer pens on the south side of the creek. East edge is where South Park Drive exits to Centennial.	Road, picnic sites, storm sewers, power lines, light poles.	Cottonwood Willow Riparian Forest (100%)
Orchard	Orchard	LP-12	Walnut Orchard. Bordered by Vallombrosa, Peterson Memorial, and a dirt trail on the west end of the Walnut Orchard.	Walnut Orchard, drinking fountain.	Orchard (90%), Cottonwood Willow Riparian Forest (10%)
Manzanita and Centennial	Manzanita North	LP-13A	Bike path on south side of Vallombrosa between Manzanita and Peterson Memorial.	Bike path.	Cottonwood Willow Riparian Forest (100%)
	Manzanita South	LP-13B	The bike path north of Centennial between South Park Drive and Manzanita.	Bike path, powerlines, picnic sites.	Cottonwood Willow Riparian Forest (100%)