



**CITY OF CHICO**  
**BIDWELL PARK AND PLAYGROUND COMMISSION (BPPC)**  
**NATURAL RESOURCES COMMITTEE**  
(Commissioners Emmerich, Moravec, and Brentwood, Chair)  
January 12, 2012, 6:00 p.m.  
Municipal Center - 421 Main Street, Conference Room 2

---

Materials related to an item on this Agenda are available for public inspection in the Park Division Office at 965 Fir Street during normal business hours or online at <http://www.chico.ca.us/>.

**1. CALL TO ORDER**

**2. REGULAR AGENDA**

**2.1. Public Input on Monkey Face Trails in Upper Bidwell Park.**

The Bidwell Park Master Management Plan's Trail Plan lists the Monkey Face trails as a priority for "known problem areas". Issues of erosion and safety are paramount and according to the MMP, should be considered a high priority. At this meeting, public input will be sought to help develop sustainable trail solutions that can meet user group interests. The meeting provides an opportunity for public input as a conceptual plan is developed. *Staff seeks public and Committee input on options for a re-routed trail to the Monkey Face overlook.*

**2.2. Update On Natural Resources Management Plan – Draft Management Units, Lower Bidwell Park.**

As part of the updating of the Natural Resources Management Plan, staff will provide the committee with a draft of management units for Lower Park, and will discuss the process for developing boundaries and names. The management units help communicate goals and track progress. The new management units will aid with the description of threats, issues, and remedies, and also provide a more effective description of areas to park crew, volunteers and emergency responders. The Committee also seeks public input to identify Lower Park Landmarks and names. Future meetings will consider management units for Middle and Upper Park. *Staff seeks feedback on a draft of Management Units for Lower Bidwell Park and input for developing names for certain Lower Park landmarks.*

**2.3. Update on Trails Plan – Public Input on Lower Bidwell Park Trails.**

As part of the development of a Trails Plan for Bidwell Park, Committee and staff seek public input on the trails of Lower Park particularly problems, needs, and attributes. Staff will provide a brief inventory of existing trails. This is an early step in the development of information for a finalized Trails Plan for the Park. Future meetings will follow a similar information gathering process for Middle and Upper Park. The information will be used to develop a trails plan for the Park. *Staff seeks public input on Lower Park trails that will aid in the development of a Bidwell Park Trails Plan.*

**3. BUSINESS FROM THE FLOOR**

Members of the public may address the Committee at this time on any matter not already listed on the agenda; comments are limited to three minutes. The Committee cannot take any action at this meeting on requests made under this section of the agenda.

**4. ADJOURNMENT**

Adjourn to the next regular meeting on 02/09/12 at 6:00 p.m. in Conference Room 2, Chico Municipal Center building (421 Main Street, Chico, California).



---

Please contact the Park Division Office at (530) 896-7800 if you require an agenda in an alternative format or if you need to request a disability-related modification or accommodation. This request should be received at least three working days prior to the meeting.



DATE: 01/04/12  
TO: Natural Resources Committee  
FROM: Dan Efseaff  
SUBJECT: Public Input on Re-Route of the Trail Leading up to the Monkey Face Overlook in Upper Bidwell Park

## Recommendation

*The meeting provides an opportunity for public and Committee member input as Staff develops options for a re-routed trail to the Monkey Face overlook.*

## Background

The Bidwell Park Master Management Plan's Trail Plan lists the reroute of trails up to Monkey Face as one of the known priority problem areas. Issues of erosion and safety are paramount and according to the MMP, should be considered a high priority and receive the focus of maintenance funding and staff. (BPMMP, Appendix E. Trail Plan p. 15).

The BPMMP's Horseshoe Lake Area Objectives, Implementation Strategies and Guidelines section (I. HL-1.) states "the Monkey Face area suffers from severe erosion, improper trail design, multiple unofficial paths, and wet season use." It recommends that multiple trails be consolidated and that appropriate routes should utilize switchbacks, stairs and other measures to reduce erosion.

As part of the process adopted at the 10/13/11 NRC meeting, the Committee received public comments on the project. Staff wishes to provide an additional opportunity for input from the public on their perceptions of:

- Problems (what they don't like),
- Attributes (what they do like),
- Needs (what would improve things), and
- Special considerations (concerns or issues)

Staff will use this information before a conceptual plan is unveiled.

Staff will provide a brief update on temporary measures applied to the area. Future steps in the process include the development of a conceptual design and a specific implementation plan. Public input at future meetings will be sought as more details are developed. Members of the public may also provide comments to staff via email or phone.



1. "Winterizing" measures.



2. Improved crossing and Middle trail work.

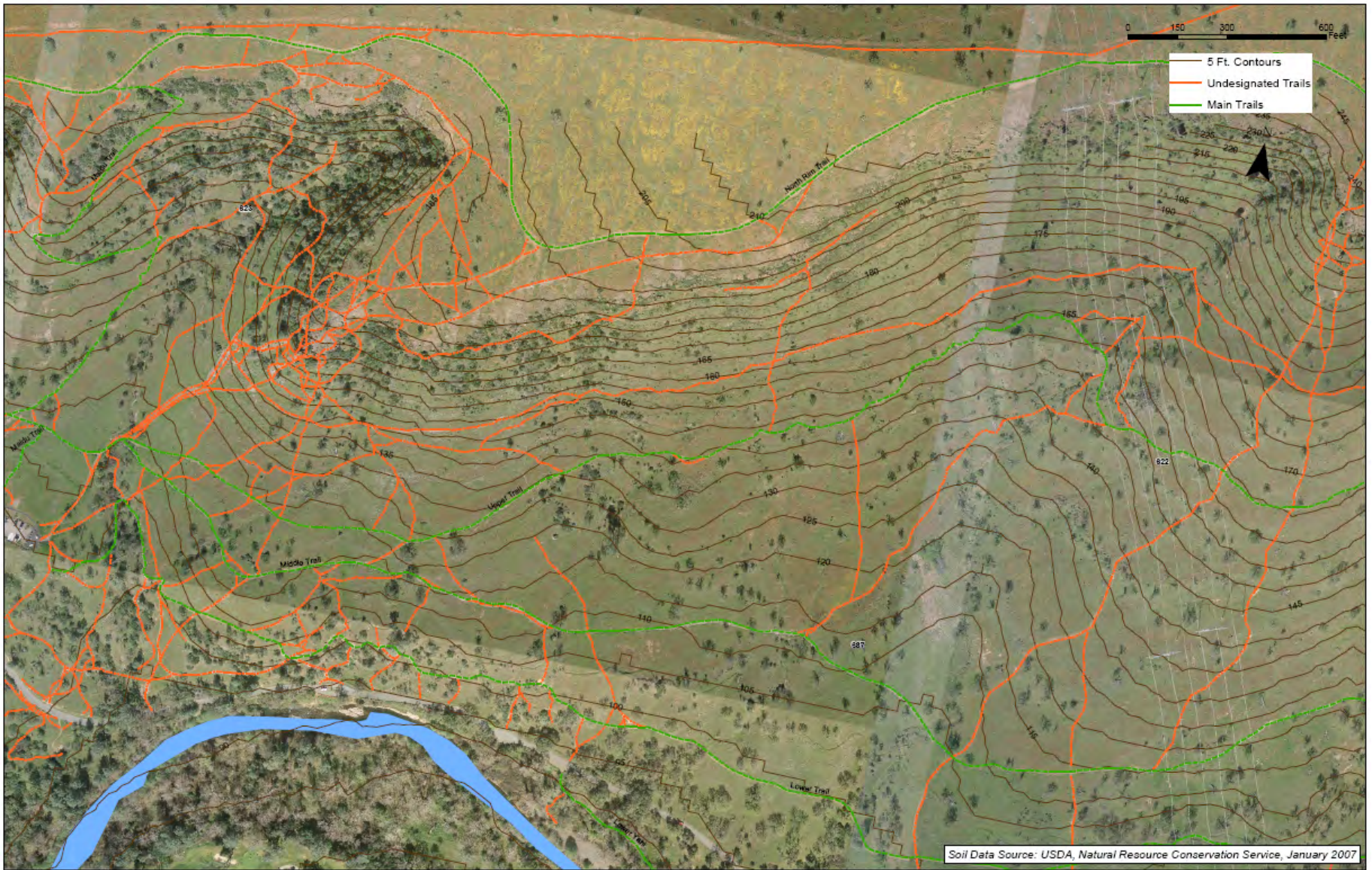


3. The combination of foot traffic, steep slopes, and water could cause large sections of rock at Monkey Face to fail.

Attachments: Monkey Face Map

**Distribution:** BPPC and trail user email list-serve.







DATE: 01/03/12  
TO: Natural Resource Committee  
FROM: Dan Efseaff, Parks and Natural Resources Manager  
SUBJECT: Update On Natural Resources Management Plan – Draft Management Units, Lower Bidwell Park.

## Recommendation

*Staff seeks feedback on a draft of Management Units for Lower Bidwell Park and seeks input for developing names for certain Lower Park landmarks.*

## Background

Bidwell Park supports a number of diverse plant communities and conditions. The BPMMP (EDAW 2008) describes several resources at different scales for management (vegetation communities, special status plants, and invasive plants). Approaching these issues at different scales and with locations in mind will suggest different remedies. To help integrate our understanding over those levels and develop pragmatic approaches that fit in with our available resources and operations, we propose management units for the park.

Dividing up the park into identifiable management units will help communicate goals into on the ground action and to track progress. Defining readily understandable management units will aid with the description of threats, issues, and management remedies, but also provide a more effective description of areas to park crew or volunteers; and also for emergency responders. This information will be integrated into the Natural Resources Management Plan that is described in the BPMMP as Appendix C.

## Analysis

Our approach to establishing management areas is different than that for vegetation communities and relies on landmarks such as roads, access, and geographic features. Since each area will encompass different vegetation communities, the approach will be different in sub areas of a unit. For example, annual grassland occupies roughly 10% of Bidwell Park; however, these areas are distributed in over 50 separate areas of the park; and it will be more effective for goals for this community to be folded into the operational approach for particular areas.

One principal criterion for defining these areas is that each area will be readily identifiable in the field and share access points. Based on a combination of the 32 management zones defined in the 1994 (check date) plan for the Park (Hardesty 19XX) and current needs, we've identified the following management units (Figure 1).

Each area has been given a descriptive name, and a management unit code. The code denotes the area of the park (Upper, Middle, Lower), and a numbering system that starts from north to south and west to east. For example, the north side of the Lost Park (Lower Bidwell Park) unit will receive the code LP-1. The sections below will provide a description of the area, a list of infrastructure or improvements, invasive plant issues, vegetation communities and special considerations. In addition, each unit will be evaluated for resource issues, strategies, recommended practices, safety issues, communication needs, etc.

## Lower Park Management Units (temporary names/descriptors)

- LP-1. Lost Park
  - a. North
  - b. South
- LP-2. Annie's Glen/Camellia Way
  - a. Camellia Way
  - b. Annie's Glen
- LP-3. Mangrove/4<sup>th</sup> Street Entrance (Entrance Unit?)
  - a. North (CARD)
  - b. South (east of Annie's tunnel)



- LP-4. One Mile (north and south)
- LP-5. Vallombrosa West/Northwest 99
- LP-6. East of Caper Acres
- LP-7. Vallombrosa Central/Northeast 99
- LP-8. Southeast 99
- LP-9. Scout Island.
  - a. Madrone West
  - b. Madrone East
- LP-10. Cedar Grove – to 2<sup>nd</sup> (deer pen” bridge).
- LP-11. South Park Drive
- LP-12. Orchard
- LP-13. Manzanita/Centennial
  - a. North
  - b. South

Staff seeks input on the boundaries and names of these proposed management units. The revised names will be used for the Management Plan.

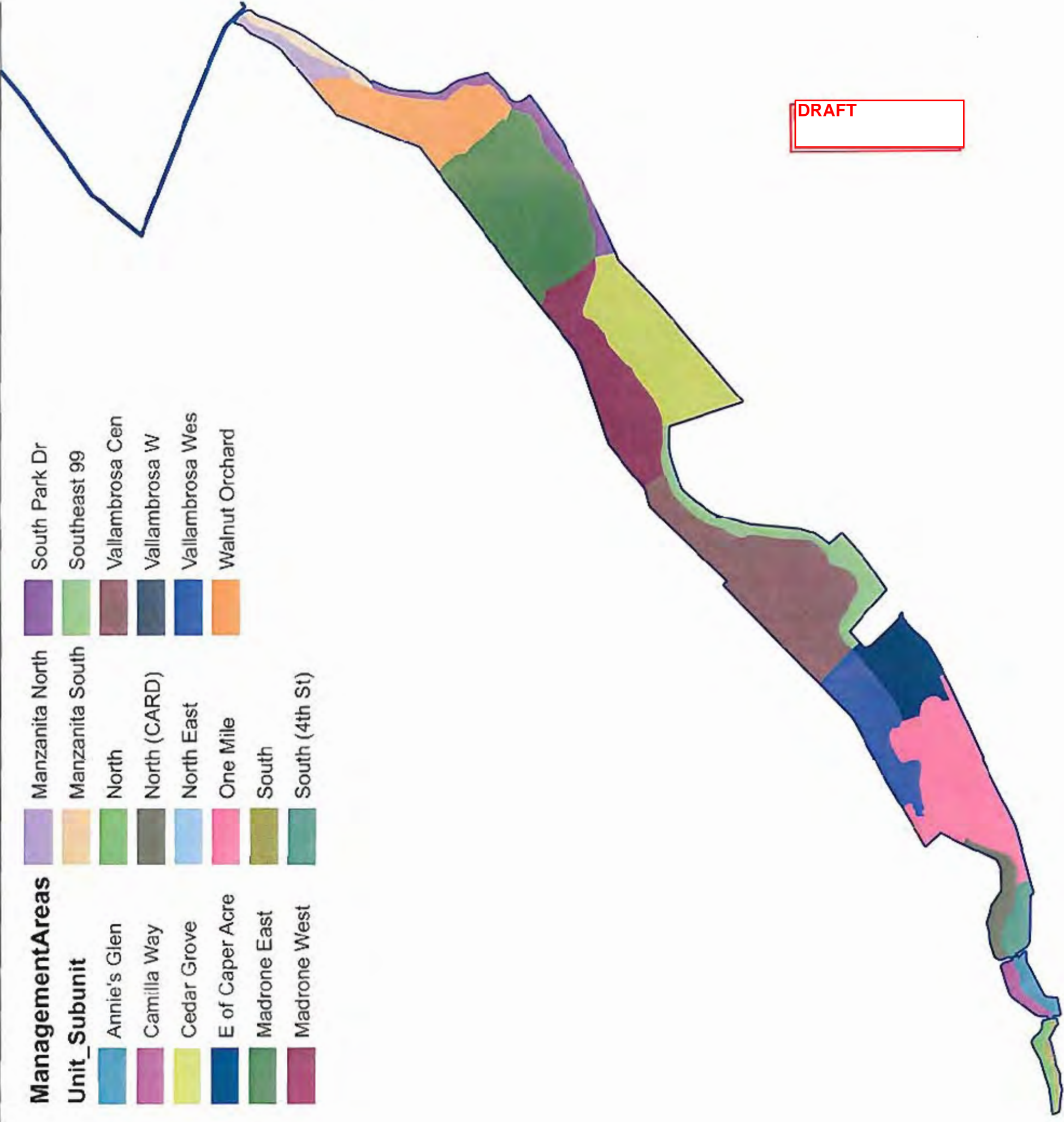
While certain Lower Park landmarks (Caper Acres, Sycamore Pool, One Mile Pedestrian Bridge) have well established names, there is much discrepancy in the community about certain place names (the bridges at Cedar Grove and the Deer Pens are often referred to by different names), and some locations that are described informally (for example, “sandy beach”) may be worth exploring more formal place names. This discussion also pertains to the naming of trails (also considered at this meeting).

This list represents an interim step toward creating Lower Park management zones. Species list and management strategies pertaining to these zones will be discussed at future committee meetings. Staff will develop specific management strategies and annual goals for the highest priority species.

**Attachments:** Figure 1 Lower Bidwell Park Management Units

**Distribution:** BPPC and trail user email list-serve.

# Lower Park Management Units



DRAFT



# Natural Resources Committee Report

Meeting Date 1/12/12

DATE: 01/04/12  
 TO: Natural Resources Committee  
 FROM: Dan Efseaff  
 SUBJECT: UPDATE ON TRAILS PLAN – PUBLIC INPUT ON LOWER BIDWELL PARK TRAILS

## RECOMMENDATION

*The meeting provides an opportunity for the public to provide input on Lower Park trails that will aid in the development of a Bidwell Park Trails Plan.*

## REPORT IN BRIEF

At its 09/29/08 meeting, the Bidwell Park and Playground Commission (BPPC) reviewed the recommendation of the Trails/Safety Committee and approved the sequential numbering of pedestrian entrances into Lower Bidwell Park (starting at the 4<sup>TH</sup> Street entrance on the south side and One Mile Recreation Area on the north and ending at Petersen Drive and Manzanita Avenue respectively. The Commission also approved formally naming the Lower Park trails as “Vita Course Trail” and the “Creek Side Trail” that runs along Big Chico Creek.

A Trails Plan was conceptually approved by the BPPC in 2002; however the plan was not finalized. A draft Trails Plan was included as part of the Bidwell Park Master Management Plan (BPMMP) as Appendix E., and the BPMMP called for the development of a more refined trails plan.

A Trails Plan serves as a guide for future trail maintenance, improvement, construction, and closure within Bidwell Park. It will also help prioritize budget expenditures and ensure that future improvements support the goals set forth by the City of Chico for the Park. The purpose of this Trails Plan in the context of the overall planning process for Bidwell Park is to ensure that any work undertaken as part of Trails Plan implementation is consistent with the vision for Bidwell Park as well as the goals and objectives set forth in the BPMMP (EDAW 2008).

The BPMMP notes that the Trails Plan was undertaken with the following assumptions:

- Trails that are functioning correctly and safely will remain.
- Utilize functioning existing trail corridors for relocations or combined new trail routes where possible.
- New trails should be carefully located to avoid impacts to sensitive resources to the greatest extent possible.
- Re-routing of existing trails should be considered where the trail can no longer be maintained in its current location due to issues such as steep slopes, legally protected cultural or natural resources, groundwater seep, erosion or where user safety will be jeopardized.
- No specific plan revisions or re-alignments of trails shall occur without careful evaluation of impacts on trails within those areas and their connections within the overall Park system.
- Reasonable restoration of soils and plant communities should accompany trail route closures where exposure of significant soilless hard pan surface or other significant erosion has occurred.
- Trails that provide duplicative access or experiences should be closed.

This agenda item restarts the effort with the collection of public input to help develop a trails system in the park that meets visitor and resource needs. The Committee will seek input from the public on their perceptions of problems (what they don't like), attributes (what they do like), needs (what would improve things), special considerations (concerns or issues), and improving the inventory of existing trails.

**Table 1. Preliminary Trail Distances Bidwell Park, Chico, California.**

Area	Roads (mi)	Bike Paths (mi)	Designated Trails (mi)	Undesignated Trails (mi)	Total (mi)
Upper	-	-	-	-	-
Middle	-	-	-	-	-
Lower	5.82	3.72	6.34	6.2	22.08
<b>Total</b>	-	-	-	-	-

Notes: Data are preliminary and will be refined with further analysis and verification. Other areas to be determined.

S:\Admin\BPPC\BPPC\_Committee\Natural Resources\2012\12\_0112\NRC\_Trails\_Plan\_Lower\_Input\_report\_12\_0112.doc



This is one of the first steps in the development of a revised Trails Plan. We will follow a similar process as we develop information for trails in Middle and Upper Park. All of the information will be folded into the Trails Plan.

**Attachments:** 1) BPMMP Trails Plan Lower Park, 2) 2011 Inventory of Lower Park Trails, Entrances, and other features.

**Distribution:** BPPC and trail user email list-serve.

# Bidwell Park Master Management Plan

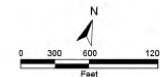
## TRAILS PLAN - LOWER PARK

### LEGEND

-  Paved Road, No Motor Vehicles Permitted
-  Paved Road, Motor Vehicles Permitted
-  Big Chico Creek
-  Unpaved Multi-Purpose Trail
-  Paved Multi-Purpose Trail
-  World of Trees Nature Trail; Accessible
-  Lower Park Boundary
-  Park Access Point, Paved/Accessible
-  Park Access Point
-  Parking
-  Council Fire Ring
-  Restroom
-  Equestrian Water Crossing
-  Group Picnic Area, Accessible
-  Picnic Area, Accessible
-  Picnic Area
-  Proposed Bridge
-  Existing Bridge



Exhibit 1



June 2006

EDAW



-DRAFT-

# LOWER BIDWELL PARK - TRAILS INVENTORY



**Park Features**

- P Parking
- ▲ Existing Bridge
- Locked Entrance/Exit
- Pedestrian Entrance/Exit
- ✂ Picnic Area
- ✂ Picnic Area - Accessible
- RR Restroom
- Vehicle Entrance/Exit
- Bike Path - no vehicle access
- Lower Bidwell Park Boundary

**Lower Park Trails**

- Designated
- Undesignated



# LOWER BIDWELL PARK - TRAILS INVENTORY

