



CITY OF CHICO
BIDWELL PARK AND PLAYGROUND COMMISSION (BPPC)

Regular Meeting Agenda
December 12, 2011, 6:30 p.m.
Municipal Center - 421 Main Street, Council Chamber

Materials related to an item on this Agenda are available for public inspection in the Park Division Office at 965 Fir Street during normal business hours or online at <http://www.chico.ca.us/>.

1. REGULAR COMMISSION MEETING

- 1.1. Call to Order
- 1.2. Roll Call

2. CONSENT AGENDA

All matters listed under the Consent Agenda are to be considered routine and enacted by one motion.

- 2.1. Approval of Meeting Minutes
Action: Approve minutes of BPPC held on 11/28/11.

ITEMS REMOVED FROM CONSENT – if any

3. NOTICED PUBLIC HEARINGS - None

4. REGULAR AGENDA

- 4.1. PG&E Request's Public Utility Easement (PUE) in Lower Bidwell Park for Support Pole Installation. PG&E is requesting consideration of a PUE to support a utility pole at the southwest corner of the intersection of Centennial and South Park Drive. The pole is currently leaning to the south and PG&E would install a support pole and guy wire. The City Council would have to grant an easement before the pole could be installed. Staff seeks a BPPC recommendation on whether to support the easement. **Recommendation:** If the BPPC supports the granting of the PUE, the GSD Director recommends additional conditions be added to the recommendation forwarded to Council.

5. BUSINESS FROM THE FLOOR

Members of the public may address the Commission at this time on any matter not already listed on the agenda; comments are limited to three minutes. The Commission cannot take any action at this meeting on requests made under this section of the agenda.

6. REPORTS

Items provided for the Commission's information and discussion. No action can be taken on any of the items unless the Commission agrees to include them to a subsequent posted agenda.

- 6.1. Urban Forest Manager's Report - Denice Britton, Urban Forest Manager
- 6.2. Park and Natural Resources Manager's Report - Dan Efseaff, Park and Natural Resource Manager.

7. ADJOURNMENT

Adjourn to the next regular meeting on January 30, 2012 at 6:30 p.m. in the Council Chamber of the Chico Municipal Center building (421 Main Street, Chico, California).



Please contact the Park Division Office at (530) 896-7800 if you require an agenda in an alternative format or if you need to request a disability-related modification or accommodation. This request should be received at least three working days prior to the meeting.

CITY OF CHICO
BIDWELL PARK AND PLAYGROUND COMMISSION (BPPC)

Minutes of
November 28, 2011 Regular Meeting

1. REGULAR COMMISSION MEETING

1.1. Call to Order

Chair Ober called the meeting to order at 6:30 pm.

1.2. Roll Call

Commissioners present:

Mary Brentwood
Clay Craig
Lisa Emmerich
Mark Herrera
Jim Moravec
Richard Ober

Commissioners absent: Jim Mikles

Staff present: Dan Efseaff (Park and Natural Resource Manager), Ruben Martinez (General Services Director), Denice Britton (Urban Forest Manager), Lise Smith-Peters (Management Analyst), and Janice Heckerson (Administrative Assistant)

1.3. Special Recognition of Alpha Sigma Phi, Friends of Bidwell Park and Chico Rotary for their work on Make a Difference Day in Bidwell Park – Lost Park Cleanup!

Chair Ober and Management Analyst Smith-Peters presented certificates to members of CSUC's Alpha Sigma Phi fraternity, Susan Mason and Steve Overlock for Friends of Bidwell Park, and Todd Kimmelshue and President Melanie Bassett of Chico Rotary Club in appreciation for the work these organizations did on Make a Difference Day. Raul Gonzales, Code Enforcement Officer for City of Chico, received a surprise award for all the help he provides to the Park and greenways in many ways.

2. CONSENT AGENDA

2.1. Approval of Meeting Minutes

Minutes of regular BPPC meeting on 09/26/11 and minutes of special BPPC meeting of 10/26/11 are presented for approval.

2.2. Consideration of a Permit for the "Frost or Fog 5k and ¼ Marathon"

Under the Sun Events requests a permit to host a race in Middle and Upper Park on January 14, 2012. Approximately 500 people participate in the 8-year old event. The route will be modified if trails are closed. This application requires BPPC consideration as the group is requesting the use of non-intensive use areas.

2.3. Consideration of a Permit for the 33rd Annual Endangered Species Faire.

Butte Environmental Council requests a permit to host an educational faire at Cedar Grove on May 5th, 2012. This will be the 33rd year the organization has held this event and they anticipate approximately 3,000 participants.

MOTION: Approve Consent Agenda as submitted. **MADE BY:** Moravec. **SECOND:**Emmerich . **AYES:** 6 (Brentwood, Craig, Emmerich, Herrera, Moravec, and Ober). **NOES:** 0. **ABSENT:** 1 (Mikles).

ITEMS REMOVED FROM CONSENT – NONE

3. NOTICED PUBLIC HEARINGS - NONE

4. REGULAR AGENDA

4.1. Bidwell Park Flyers South Rim Paragliding Launch Proposal

In 2009, the City Council allowed paragliding to occur at designated launching and landing sites in Bidwell Park. The proponents request two additional launch sites, located on the south side of Big Chico Creek at Peregrine Point, with limitations as to launch dates. Staff provided a recommendation (revised and supplied as part of the supplemental packet) for conditional approval for one year with launching allowed at the alternative launch site only between August to January, acceptance of educational signage, and an annual review.

Commissioner Brentwood asked for more information regarding annual BPPC review and reports from flyers. She also expressed concern about allowing additional uses in that area. Park and Natural Resources Manager Efsseff said for now there is no monitoring program on the impact on peregrines, but volunteers are watching them. Monitoring would occur on the activity.

Commissioner Craig asked about how BPPC would know for sure whether there will be an active nest on site. Park and Natural Resources Manager Efsseff said flights would be prohibited in this area from January to July to avoid disturbing any possible fledglings and to not interfere with the nesting season. Commissioner Herrera asked what has been learned from other cities about possible impact of paragliding on other birds. Park and Natural Resources Manager Efsseff stated that Peregrine falcons are adaptable but that the information is mixed and is a gray area. The most applicable study on Paragliding and Peregrine falcons comes from a study in Europe that indicated no impact after 30 years of use, but also cautioned against new impacts to birds in more remote areas.

From the public:

Jon Stallman pointed out that peregrines successfully nest in busy urban areas. There are few flyers with the qualifications to fly from this area. There is a long, extensive screening to get a license to P-4 advance level. Few flyers can read that site well enough to fly from it although paragliders have been using the south side since the 1970's. Any visiting pilot must also have thorough education on Bidwell Park from Jon or one other administrator. He studies air patterns and birds' actions while he flies thermals with them and has never had a close call with a bird.

Phil Johnson, with Altacal Audubon Society, stated his knowledge of bird life of Bidwell Park. In 1989 it was hard to find a peregrine in the area. Now they are there but disc golf and flyers are a risk to the birds of this area. Woody Elliott is a volunteer who monitors a pair of birds for their nesting activity. We cannot be sure flights are not affecting them during any season. He is monitoring peregrines in Butte Creek Canyon and Bidwell Park cliffs. The pair there did not nest last year. He appreciated the challenges of balancing park use with the limited information that is available. Marilyn Gamette, of Bidwell Wildlife Rehabilitation, does lots of work with raptors. She stated that it is important to consider what disturbances can do to these prey species and that the south cliffs should be left alone.

Commissioner Emmerich appreciates paragliders coming to talk, and noted that the discussion on impacts and monitoring of disc golf went on for a long time. The guidelines of the Master Management Plan determine our policies for the Park. Decisions here could be a precedent for additional activities on the south rim. She recommends this issue go to Policy Committee or Natural Resources to get more information and for further review.

Commissioner Craig said presentations are without a solid scientific basis so he would tend to need more information. Commissioner Brentwood needs more time to see how it fits into MMP. Commissioner Herrera suggested both sides are here now and could meet for further discussion. Commissioner Moravec thinks it is reasonable to gather additional information. Chair Ober agrees to send it to a committee and he suggests Natural Resources. Impact on wildlife might be significant but accordance with MMP must also be considered.

MOTION: Direct the question of developing take off sites for paragliding from the south rim to Natural Resources Committee. **MADE BY:** Emmerich. **SECOND:** Brentwood. **AYES:** 6 (Brentwood, Craig, Emmerich, Herrera, Moravec, and Ober). **NOES:** 0. **ABSENT:** 1 (Mikles)

5. BUSINESS FROM THE FLOOR

Susan Mason, who participates in the Bicycle Advisory Committee, noted the absence of BPPC representatives at the meetings. This Committee handles a lot of money and she hopes anyone who chooses to be on the Committee will attend. It is one hour four times a year

6. REPORTS

6.1 Tree Committee Reports, Mark Herrera, Committee Member

Committee member Herrera said the Tree Committee discussed several aspects of growing fruit trees on public property. The committee acknowledged that citizens currently are allowed to glean from City street trees and that the City does not have the resources to pick the fruit. At this point, the City should not change its current policy of not planting fruit trees along City streets. If an organization would like to formally glean from public trees, that they should approach the Urban Forester and develop an agreement for an encroachment permit, submit a holders harmless agreement and certificate of insurance naming the City as the additionally insured. Additional issues should be examined if an organization wishes to develop a proposal.

6.2 Natural Resources Committee Report, Mary Brentwood, Chair

This Committee has not met since last general meetings so there is nothing new.

6.3 Policy Advisory Committee Report, Rich Ober, Committee Member

The Committee continues its work on draft language for an updated park donations policy. The last meeting of 11/17 failed to have a quorum so will be rescheduled, probably in January.

6.4 Urban Forest Manager's Reports - Denice Britton, Urban Forest Manager

Both the September and October reports are included. She has met with CalTrans and Butte College about landscape issues. Two contracts are out for pruning trees, including a tree service to prune City trees on private land. The CSUC parking lot at Second and Normal/Chestnut is not up for City review, but it is nice to be working together with CSUC on the landscaping. A smaller First Street project contract is going out for bid again.

6.5 Park and Natural Resources Manager's Reports - Dan Efseaff, Park and Natural Resource Manager

Park Manager Efseaff, covered a number of items from the reports that covered the October and November time periods. The 2011-2012 work plan is attached. There is a change in the Middle Trail scope to improve ADA access around Horseshoe Lake. We had good feedback on the Ranger-led bike tour. Roger Cole submitted a monitoring report on Verbena Fields. A ten-acre burn is completed and native grass is being planted. We have an application from Occupy Chico that has not been completed.

Park and Natural Resources Manager Efseaff noted that the Park reservation system will soon be updated to an online system. Staff is looking at a software program to accommodate the smaller staff and hoping for early 2012 implementation.

Public comments on reports – None.

6. ADJOURNMENT

Adjourn at 8:15 pm to the next regular meeting on 12/12/11 at 6:30 p.m. in the Council Chamber of the Chico Municipal Center building (421 Main Street, Chico, California).

Date Approved: / / .

Prepared By:

Janice Heckerson, Administrative Assistant

Date

Distribution:



DATE: December 6, 2011
TO: BPPC
FROM: RUBEN MARTINEZ, GENERAL SERVICES DIRECTOR
SUBJECT: PG&E Request's Public Utility Easement in Lower Bidwell Park for Support Pole Installation

Recommendation: PG&E requests a BPPC recommendation to City Council for the granting of a public utility easement (PUE) to PG&E for the installation of a support pole and guy wire for an existing Joint Utility Pole. General Services Director recommends the Commission consider a conditional recommendation to Council supporting the conceptual proposal due to the unique circumstances of the existing pole configuration.

Background:

PG&E has a configuration of joint utility poles located along Centennial Avenue. An area map is provided as Attachment #1. The location of the poles creates tension angles which are best depicted in Attachment #2 (PGE option #1 and a photograph illustrating the cable tension configuration). This request is related to a pole located at the southwest corner of the intersection of Centennial and South Park Drive. This pole is leaning southerly towards a second pole creating slack in the utility lines. The leaning pole has allowed the utility cables to drop to 14' 4" above the street pavement. The maximum allowable vehicle height is 13' 6". While the lowest sagging utility lines are bundled communications cables the highest line is a 12,000 volt electric carrier, creating a dangerous situation.

Report:

PG&E has submitted their preferred solution as shown in Attachment #2. The drawing depicts installation of a 35 foot pole with a 13 foot lead guy. They have provided a second option which includes the addition of two poles along the Centennial right of way, which allows the reconfiguration of the overhead lines, as shown in Attachment #3.

In support of their preferred option they have submitted a map dated 1957, Attachment #4, depicting the prior existence of a similar guy wire.

The proposed installation would impact an Elderberry bush in the area, requiring either the trimming or removal of the plant. Elderberry bushes are protected habitat of the Valley Elderberry Long Horn Beetle (VELB) and is depicted in attachment #5

In support of their preferred solution, PG&E has submitted a Biological Opinion dated June 27, 2003. While the report may be expandable to include City park land it does not currently cover City properties. Staff has included pages 1-2 to identify the document and to highlight the specific language which omits mention of the City of Chico park lands, in any form (see Attachment #6). Based on a field inspection of the proposed setting by PG&E, it is the Urban Forester's opinion that it is possible to trim the plant in such as way that it would have a high likelihood of continuing to thrive.

Bidwell Park Master Management Plan

The Bidwell Park Master Management Plan (EDAW 2008) does not address utility easements; however, there are a number of objectives discouraging future encroachments. While most of these objectives leave open the decision-making process on a case by case basis; they indicate a strong trend to minimize incremental impacts and protect park boundaries from encroachments. Objectives related to aesthetics, preserving vegetation and habitat also are pertinent, but the most significant issue centers on the easement and encroachment. The following objectives should be considered with this request:

Goals

- AR: Identify and protect the scenic and aesthetic resources in Bidwell Park.
- SLU-4: Eliminate existing encroachment into Bidwell Park land and take steps to prevent encroachment in the future.

Objectives:

- O. SLU-2. Assess potential impacts on Bidwell Park and comment on the scope and content during the environmental impact review process conducted for all development in the Chico urban area and require mitigation measures that reduce impacts to less than significant levels. Mitigation measures should address issues such as fragmentation of natural communities and movement and dispersal corridors, duration of impacts, buffer zones, noise, height restrictions, architectural and landscaping guidelines, open space easements, and parkland dedications. *Consider incremental and cumulative impacts.*
- O. SLU-7. Expand the Park where feasible to enhance and protect the values that make Bidwell Park of importance to the community.
- O. VR-2. Keep structures and other development features to a minimum and design them to blend into the cultural and natural setting. Utilize natural materials to soften the presence of structures in the natural environment.

Implementation Strategies

- I.SLU-3. Developers and other project applicants shall be required to mitigate their respective negative impacts on Bidwell Park. City staff should consider potential impacts on Bidwell Park when they comment on the scope and content of environmental impact assessments.
- I.SLU-5. Park boundaries shall be surveyed and protected from structural encroachments and invasive plant encroachment, and an encroachment policy should be developed.

In recent history there has been only one instance of discussion of a utility easement within the park. This discussion was related to an existing City water well at Hooker Oak. There was a modification to an existing utility easement that runs across the park between 5-Mile and Manzanita Ave.

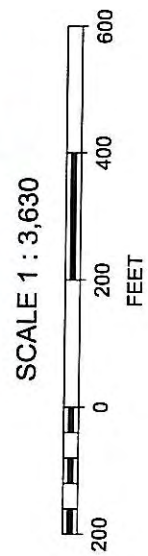
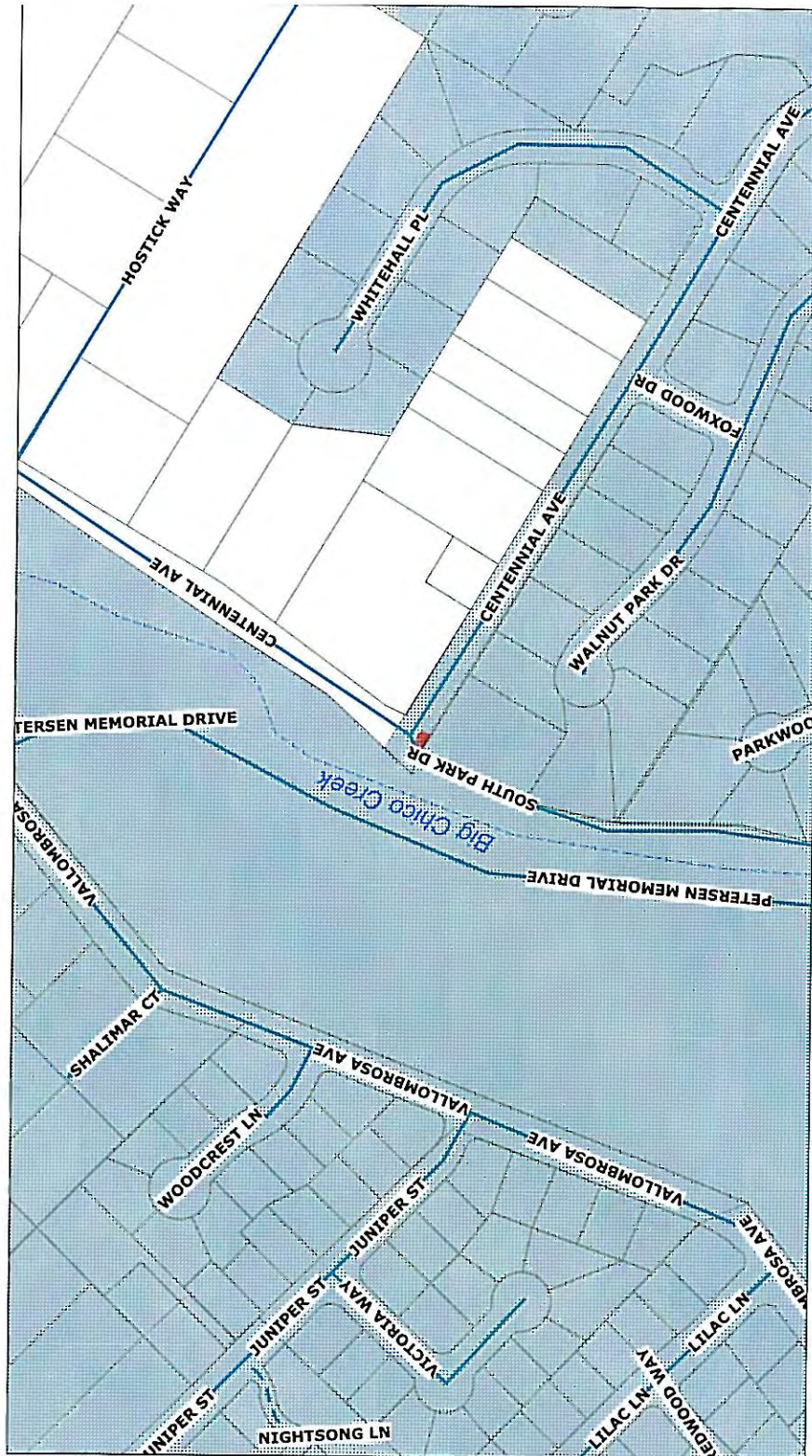
Staff recommends that if the Commission favorably considers the PGE preferred solution that conditions including but not limited to: requiring Environmental Review and that the PUE grant deed include a limit on the type of use, an annual review period, a relocation upon City request requirement, and an indemnification clause for creek erosion.

Attachments:

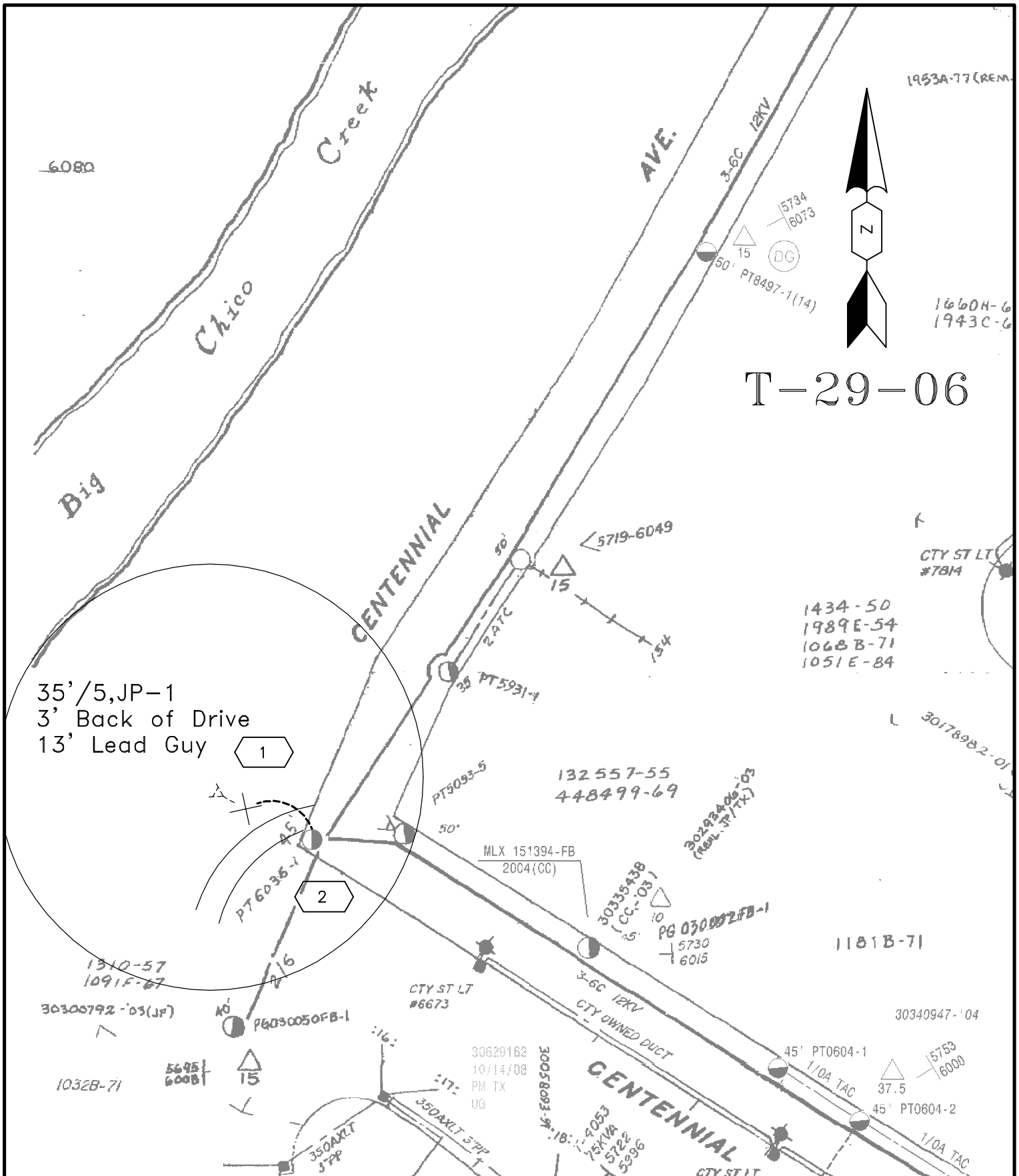
1. Project Area Map
2. PGE Guy Stub, Opt #1 (2 pages)
3. PGE Pole Line Relocation, Opt #2
4. Apr 3, 1957 Dist. Plant plat
5. Elderberry photo 10/13/2011
6. Fish and Wildlife Service letter dated June 27, 2003

City of Chico

	Public/Private Streets
	Private
	Public
	Streams
	Creek
	Diversion Channel
	Lakes
	Parcels
	City Limits



Attachment "1"



T-29-06

35'/5, JP-1
 3' Back of Drive
 13' Lead Guy

EST: K.BEDSAUL 894-4706	
ADE: KLB7	
SUPV: D.BUIST	
REP:	
PLNR: D.SPENCER	
SCALE: 1"=100'	DATE: 10/11/2011



PG&E GUY STUB, OPT #1

121 CENTENNIAL AVE
 CHICO

PACIFIC GAS AND ELECTRIC COMPANY

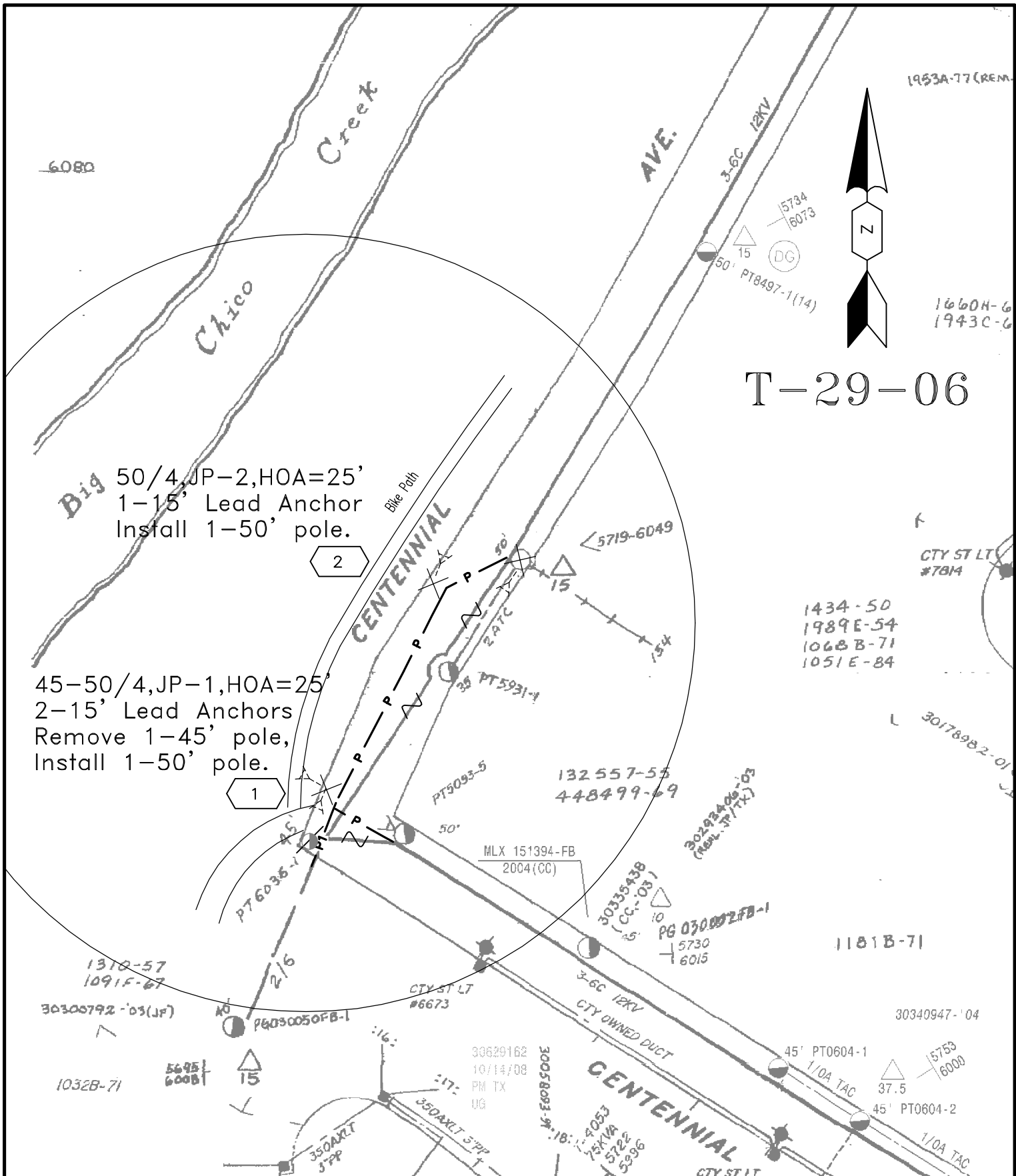
CO:	
SD:	
NOTIF:	
OTHER:	
SHT: 1 OF 1	SHEETS
PM: 30878171	REV.

10.13.11

(2)



10/13/2011 08:11



T-29-06

50/4, JP-2, HOA=25'
1-15' Lead Anchor
Install 1-50' pole.

2

45-50/4, JP-1, HOA=25'
2-15' Lead Anchors
Remove 1-45' pole,
Install 1-50' pole.

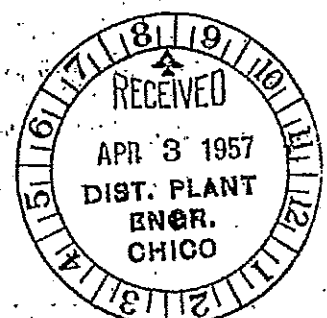
1

EST: K.BEDSAUL 894-4706
ADE: KLB7
SUPV: D.BUIST
REP:
PLNR: D.SPENCER
SCALE: 1"=100'
DATE: 10/11/2011

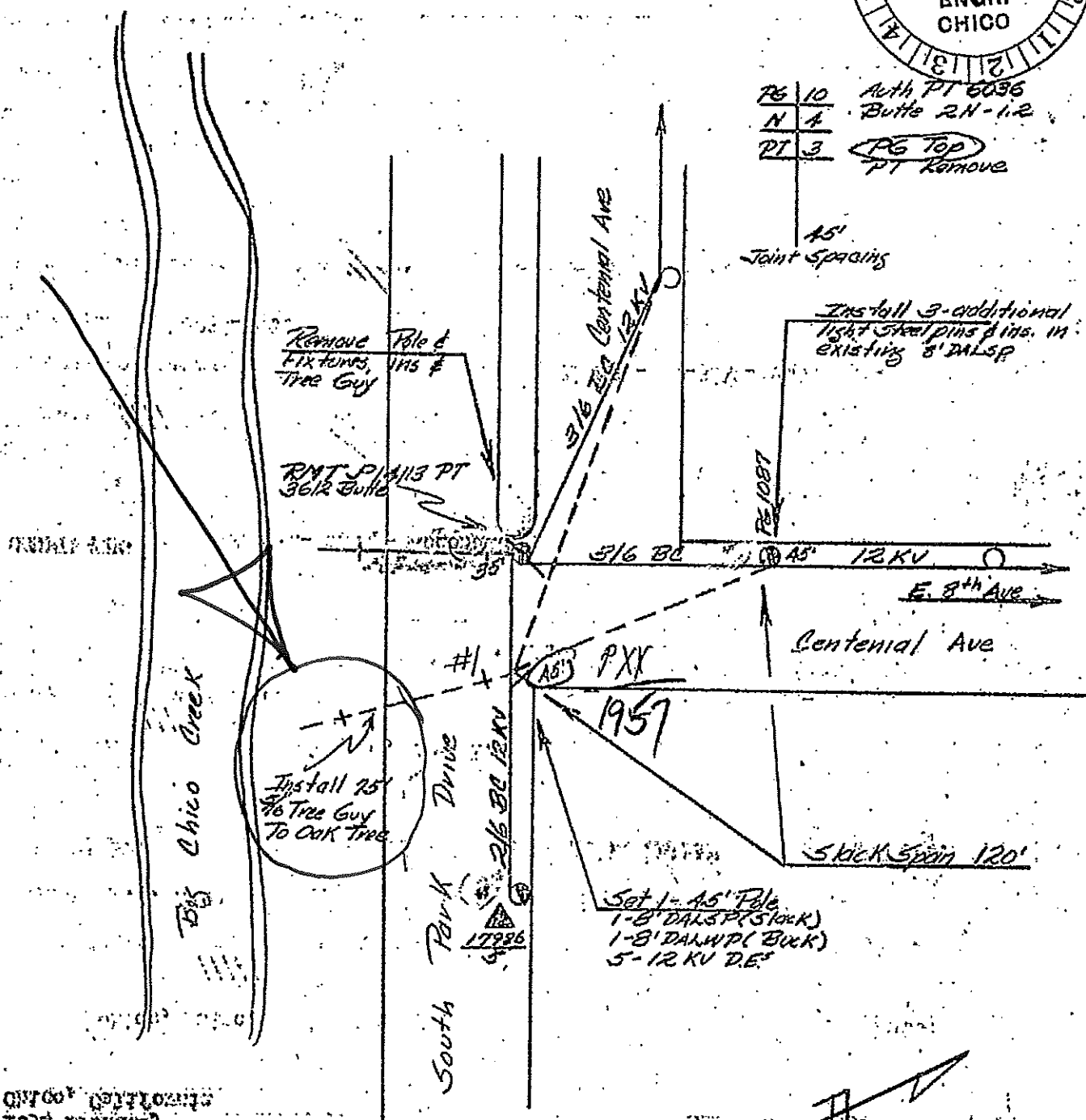
PG&E POLE LINE RELOCATION, OPT #2
121 CENTENNIAL AVE
CHICO
PACIFIC GAS AND ELECTRIC COMPANY



CO:
SD:
NOTIF:
OTHER:
SHT: 1 OF 1 SHEETS
PM: 30878171 REV.



PG 10 Auth PT 6096
 N 4 Butte 2N-1.2
 PT 3 PG Top
 PT Remove



CHICAGO
 DIST. PLANT
 ENGR. CHICO

L-18
 Forbes - Kelly - Mc Donald

10.13.11. (7)



10/13/2011 08:17

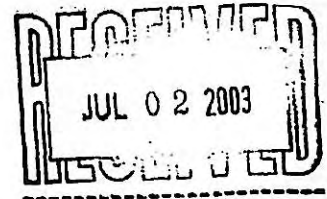
41' Span Sky
Pole 4' off Pavement
13' L on Anchor

Attachment "5"



United States Department of the Interior

FISH AND WILDLIFE SERVICE
Sacramento Fish and Wildlife Office
2800 Cottage Way, Room W-2605
Sacramento, California 95825-1846



IN REPLY REFER TO:
1-1-01-F-0114

June 27, 2003

Jack Blackwell
Pacific Southwest Regional Forester
Forest Service
1323 Club Drive
Vallejo, California 94592

Mike Poole
California State Director
Bureau of Land Management
2800 Cottage Way, Room W-1834
Sacramento, California 95825

Subject: Formal Endangered Species Consultation on the Pacific Gas and Electric Company Transmission Separation Project, located in the Plumas, Sequoia, and Sierra National Forests within Butte, Plumas, Madera and Fresno Counties; in the Redding, Folsom, and Bakersfield Districts within Madera, Fresno, Amador, Calaveras, Tuolumne, Nevada, Placer, Butte, Yuba, Shasta and Tehama Counties; and Various Other Jurisdictions, California.

Dear Messrs. Blackwell and Poole:

This is in response to the Forest Service's (FS) March 20, 2001, and Bureau of Land Management's (BLM) July 1, 2002, request for formal consultation with the U.S. Fish and Wildlife Service (Service) on the Pacific Gas and Electric Company Transmission Separation Project (Project) in the FS's Plumas, Sequoia, and Sierra National Forests, Butte, Plumas, Madera and Fresno Counties and in the BLM's Bakersfield, Folsom and Redding Bureau of Land Management Districts, Madera, Fresno, Amador, Calaveras, Tuolumne, Nevada, Placer, Butte, Yuba, Shasta and Tehama Counties, California.

The Service concurred with the FS's determination that the Project is not likely to adversely affect the bald eagle (*Haliaeetus leucocephalus*), California red-legged frog (*Rana aurora draytonii*) (frog), and Springville clarkia (*Clarkia springvillensis*) on November 21, 2000 (Service file 1-1-00-3149). However, also as stated in our November 21, 2000, letter to the FS,

the Service does not concur with the FS's determination that the proposed project is not likely to adversely affect the threatened valley elderberry longhorn beetle (*Desmocerus californicus dimorphus*) (VELB). The Service concurs with the BLM's May 15, 2003, determination that the proposed action is not likely to adversely affect the bald eagle.

This document represents the Service's biological opinion on the effects of the action on the VELB, as described in our August 22, 2002, letter to the FS and memorandum to the BLM (Service files 1-1-02-I-3005 and 1-1-01-I-3006, respectively). This biological opinion has been prepared pursuant to section 7 of the Endangered Species Act of 1973, as amended (16 U.S.C. 1531 *et seq.*)(Act) and authorizes only incidental take of the VELB on FS, BLM, and private lands.

This biological opinion is based on information provided in, among other things: (1) Pacific Gas and Electric Company's October 1999, *Results of Habitat Assessments and Protocol-Level Field Surveys for the California Red-legged Frog (Rana aurora draytonii) Conducted for the Transmission Line Separation Project*; (2) FS's August 2000 *Biological Assessment of Potential Effects of the Pacific Gas and Electric Company Transmission Line Separation Project on Federally Listed Endangered or Threatened Wildlife Species* (Wildlife BA); (3) FS's August 2000, *Biological Assessment of Potential Effects of the Pacific Gas and Electric Company Transmission Line Separation Project on Federally Listed Endangered or Threatened Plant Species* (Plant BA); (4) FS's March 20, 2001, *Addendum to Biological Assessment of Potential Effects of the Pacific Gas and Electric Company Transmission Line Separation Project on Federally Listed Endangered or Threatened Wildlife Species* (Addendum); (5) Pacific Gas and Electric Company's November 19, 2001, *Additional Information on Valley Elderberry Longhorn Beetle for the Pacific Gas and Electric Company Transmission Separation Project*; (6) BLM's July 1, 2002, request for formal consultation; (7) BLM's April 2003 *Biological Assessment of Potential Effects of the Pacific Gas & Electric Transmission Separation Project on Threatened Valley Elderberry Longhorn Beetle and Other Listed Species*; (8) Garcia and Associates' November 27, 2002 *Valley Elderberry Longhorn Beetle Surveys on Properties Associated with Pacific Gas and Electric Company's Transmission Separation Project*; (9) Garcia and Associate's March 2003 *Supplemental Biological Surveys on BLM Lands Affected by PG&E's Transmission Separation Project* and its March 2003 revision; (10) Pacific Gas and Electric Company and the Service's September 13, 2002 *VELB Conservation Program*, as amended in March 2003; and (11) other published and unpublished sources of information. A complete administrative record of this consultation is on file in our office.

Consultation History

May 6, 1998. The Service provided Pacific Gas and Electric Company with a species list during a meeting in Sacramento for the proposed action in the Eldorado, Plumas, Sequoia, Shasta-Trinity, Sierra, Stanislaus and Tahoe National Forests.

November 30, 1999. Pacific Gas and Electric Company submitted to the Service California red-legged frog habitat assessment and protocol-level surveys for the Project. Enclosed was a copy



DATE: 12/6/11
TO: BPPC
FROM: Denice Britton, Urban Forest Manager
SUBJECT: Urban Forest Manager's Report

Prepared for verbal presentation at the BPPC meeting.

1. Updates

- a. Field Supervisors Report – The field supervisor's report is attached. Their main focus was on service requests and clean up of downed limbs. The crew put up the Christmas tree lights at the Plaza, and were quite efficient at it this year – 96 hours versus 128 hours last year.
- b. Staff met with the Bidwell Park Golf Course (BPGC) Superintendent Tom Horseman to discuss several tree removals and other issues. The following is a summary of the results of our meeting. The Golf course would like to take the following actions:
 1. Remove a dead blue oak on Fairway #1; the tree is almost completely dead and will pose a hazard to course users.
 2. Remove at least one completely dead gray pine over the golf cart path at #2 green. Another pine is also leaning over the cart path next to this one and should be removed or monitored closely. Removal of the dead pine will require caution, as it is likely being held up by the adjacent tree.
 3. Remove dead cottonwood at #8 Fairway - this tree has been dead for a few years and could fail at any time.
 4. Requested to remove 1 or 2 large old blue oaks at the #4 tee. These oaks have extensive decay, but no signs of imminent failure. Staff suggested the BPGC plants at least 4 new trees near these before staff is willing to agree to removal. There is more than enough room to plant several specimens around the tee. The sooner these are in the ground and are established, the sooner the shade will be replaced and the potential safety issue can be alleviated. Until these new trees are in place, the trees should be monitored annually, and after major storms.
 5. A blue oak next to upper park road is quite dead - this tree needs to be removed as the highest priority of the trees examined. It has been dead for some time.
 6. There are several under story olive trees at #17 green that the Club would like to remove - and these are all acceptable to staff. Removing them will improve fire safety, esthetics and reduce the number of invasive olives on the site.
 7. There is a blue oak in front of the club house, next to the propane tank. This tree should have the ivy removed in the near future to maintain its health.
- c. Children's Playground – New sod and irrigation has been installed around the new labyrinth. Additionally, several repairs to the benches at the Bidwell Bowl have been made over the last 3 weeks due to vandalism and wear and tear. The landscapers are installing 2" by 6" benches, rather than 2" by 4" boards to try to reduce broken benches in the future.
- d. Landscapes – Staff continues to meet with the new Landscape Contractor to review work accomplished and requirements for various sites. The leaves dropping all at once this year are a big challenge.

2. Service Requests and Tree Permits

- a. Attached is a list of completed and closed service requests for the month of October:
 - North Valley Tree Service -- 350 Idyllwild Circle – Remove tree that is lifting the utility box and driveway.
 - North Valley Tree Service -- 2513 White Avenue – Elevate foliage on Chinese pistache
 - PG&E -- Remove volunteer valley oak in alley between Oleander and Laburnum, south of 9th Avenue, interfering with high voltage lines and with extensive decay in exposed limbs.

Attachments: Field Supervisor's Report, Monthly Dailies, Search Results



DATE: December 5, 2011
TO: URBAN FOREST MANAGER
FROM: DAVID BETTENCOURT, FIELD SUPERVISOR- STREET TREES
SUBJECT: STREET TREE MAINTENANCE REPORT FOR NOVEMBER, 2011

1. STREET TREE MAINTENANCE

A. PROJECTS COMPLETED:

1. 24-SERVICE REQUEST- 225 man hours, a detailed list is attached.
2. ASSIST DPW- 89 man hours spent driving truck for the leaf pick up program.
3. CHRISTMAS TREE AND MENORAH- 96 man hours spent decorating the City Christmas tree and setting up the Menorah.
4. DOWN LIMBS AND HANGERS- 43 man hours at numerous locations.
5. TRAINING- 24 man hours.
6. SAFETY MEETINGS- 2 man hours.
7. PRIORITY REMOVALS- 20 man hours.
8. PREP TIME AND DOT INSPECTIONS- 58 man hours.
9. EQUIPMENT MAINTENANCE- 34 man hours.
10. STORM DAMAGE CLEAN UP- 18 man hours cleaning up after a few days of 40-45 mph high winds.

B. CALL OUTS:

1. There was 1 call out for the month of November.

Chico Service Request Search Results

Operator	Date Entered	Requestor	Requestor Phone	Tracking No	Location	Assigned To UID	Assigned To Name	Division	Status
trodriгу	11/30/2011	CPD Dispatch		8B05585D6E	E Frances Willard / E Lincoln	tnebel	Nebel, Tim	Trees/Public Landscapes	Closed
Description:	REMOVED	low hanging tree, Tim has been called.							
trodriгу	11/30/2011	Jennifer - Dispatch		86DFD74B90	W 1st Ave / Citrus	tbeach	Beach, Troy	Trees/Public Landscapes	Closed
Description:	CLEANED UP	Tree limb down, fire pulled it to the side of the road but said there is other debris that needs to be cleared, the ROW is not blocked. Dave has been called.							
jgonzale	11/28/2011	J. Gonzalez	895-4961	F790BD0854	348 W. Francis Willard	dbettenc	Bettencourt, Dave	Trees/Public Landscapes	Closed
Description:	REMOVED	Dave, I'm not sure, but I think there is a sizable dead/hanging limb in this city tree at 348 W. Francis Willard. cross street Citrus.							
cparacho	11/22/2011	Peter Hanson-1060 Yosemite	898-9548	FF701DA47D	355 Brookside Dr	dbettenc	Bettencourt, Dave	Trees/Public Landscapes	Closed
Description:	PRIVATE	dead tree for 10 years and still standing please remove Alder w/blight							
trodriгу	11/21/2011	Shane Lash	966-4955	835E51FFC7	1952 Broadway	dbettenc	Bettencourt, Dave	Trees/Public Landscapes	Closed
Description:	PRUNED	Tree is on the 20th side of property. 2 trees with a heavy canopy, especially when it rains. RP concerned since the branches are close to power lines.							
trodriгу	11/21/2011	John Siebal	342-7189	412A7CF3AB	656 E 5TH ST	tnebel	Nebel, Tim	Trees/Public Landscapes	Closed
Description:	REMOVED	Walnut tree is precariously leaning toward his fence. He would like the tree removed. He would also like contact, Dave has been called.							
trodriгу	11/17/2011	Laura Wong	342-7652	4DEB90C307	1345 Laurel St	tnebel	Nebel, Tim	Trees/Public Landscapes	Closed
Description:	PRUNED HIGH PRIORITY	Olive tree on the E 12th side of the property/building needs to be pruned.							
dbettenc	11/16/2011	DRB	624-1620	8186C4A966	1233 Laburnum Ave	tnebel	Nebel, Tim	Trees/Public Landscapes	Closed
Description:	PRUNED HIGH PRIORITY	Large deodar cedar, safety prune target areas and clean up down limb.							
dbritton	11/15/2011	Bruce Jackson	896-0566	D08B359508	1925 Manzanita	dbettenc	Bettencourt, Dave	Trees/Public Landscapes	Closed
Description:	INSPECTED	Two trees in front of house are tagged - they are low over the street, and the new owners would like to have them pruned. Check to see if they are in ROW, and then schedule accordingly.							
trodriгу	11/10/2011	Josie Harrison	990 8077	AB88477A5E	1838 Palm Ave	tnebel	Nebel, Tim	Trees/Public Landscapes	Closed
Description:	PRUNED/ELEVATED	RP would like City to confirm whose tree the persimmon tree is, she states she's been told it's private and she's been told it's City. If City then please prune. She would also like contact.							
trodriгу	11/09/2011	Kathy Shanks	879-9619	11492B5D9E	668 Cromwell Dr	aholt	Holt, Aaron	Trees/Public Landscapes	Closed
Description:	CLEANED UP	Tree branch just broke, it's on the side of the road now.							
trodriгу	11/09/2011	Perry Dickinson	899-9518	EB4D3F87DE	1092 Adlar Ct	dbettenc	Bettencourt, Dave	Trees/Public Landscapes	Closed

Chico Service Request Search Results

Operator	Date Entered	Requestor	Requestor Phone	Tracking No	Location	Assigned To UID	Assigned To Name	Division	Status
Description: INSPECTED RP is elderly and states the tree root is uplifting the sidewalk on the Oak Way side of property. ROW has also been notified.									
trodrigu	11/08/2011	Sgt Aguilar - Nat'l Guard	895-4225	375C4542A8	2415 Tom Polk	dbettenc	Bettencourt, Dave	Trees/Public Landscapes	Closed
Description: PRIVATE BRUSH Tree branches in the street left from pruning. RP couldn't tell me if it was City employees, please confirm. Aaron is going to check it out.									
cparacho	11/08/2011	Rahni Ramsden	332-7004 wk 893-5315 hm	2D099140FE	2175 Huntington Dr	dbettenc	Bettencourt, Dave	Trees/Public Landscapes	Closed
Description: INSPECTED husband and son removed tree because of the roots raising the sidewalk and encroaching into lawn and house foundation. Now needs stump ground inspect and advise									
trodrigu	11/07/2011	Naomi Estes	891-5903	5632F4632E	1121 LABURNUM AVE	aholt	Holt, Aaron	Trees/Public Landscapes	Closed
Description: CLEANED UP Branch from Zelkova tree fell last night, has been pulled next to the tree. She would like contact regarding the eta of the branch that is almost hitting her house.									
cparacho	11/04/2011	Ed Luna	897-4900	11819078E0	604 Salem St	dbettenc	Bettencourt, Dave	Trees/Public Landscapes	Closed
Description: PRUNED When possible could you trim up the orange tree located on the north / west corner of the 600 block of Salem. Specifically the branches that are starting to block the 2 hour parking sign. Thank you Ed Luna City of Chico Parking Service Specialist									
dbettenc	11/04/2011	Ruben		E272E57F98	Old Muni Building	tnebel	Nebel, Tim	Trees/Public Landscapes	Closed
Description: REMOVED CHL HIGH PRIORITY Deodar cedar behind the Old Muni Building, remove large CHL and inspect for hazards.									
dbettenc	11/04/2011	DRB	624-1620	E0C3118294	Holly Ave	tbeach	Beach, Troy	Trees/Public Landscapes	Closed
Description: COMPLETED HIGH PRIORITY On Holly between Cussick and the creek, elevate Chinese pistache and clean up brush pile.									
cparacho	11/03/2011	n/a	521-0669	19C117F51A	887 E 6th St	tbeach	Beach, Troy	Trees/Public Landscapes	Closed
Description: COMPLETED broken hanging limb in tree across from RP IFO a blue house and dead branches in tree IFO RP's house									
cparacho	11/02/2011	Mike Campos	518-4610	5CC78892F0	595 E 3rd St	dbettenc	Bettencourt, Dave	Trees/Public Landscapes	Closed
Description: outside agency tree service, not a City vehicle, no power lines so not PG&E, pruned a tree, approximately, Friday 10/28/11, standing on the roof of this very old house that did not have any leaks at the time of the work but has been known to leak after being stood on. City being put on 'notice' in case the roof does leak now.									
cparacho	11/02/2011	Mike Campos	518-4610	5CD3B4A002	595 E 3rd St	dbettenc	Bettencourt, Dave	Trees/Public Landscapes	Closed
Description: outside agency tree service, not a City vehicle, no power lines so not PG&E, pruned a tree, approximately, Friday 10/28/11, standing on the roof of this very old house that did not have any leaks at the time of the work but has been known to leak after being stood on. City being put on 'notice' in case the roof does leak now.									
trodrigu	11/01/2011	Meda-lou Padden	332-9770	CDF9A03F70	668 Cromwell Dr	tbeach	Beach, Troy	Trees/Public Landscapes	Closed

Chico Service Request Search Results

Operator	Date Entered	Requestor	Requestor Phone	Tracking No	Location	Assigned To UID	Assigned To Name	Division	Status
Description: COMPLETED 4 small branches down - pulled to the gutter.									
trodrigu	11/01/2011	Dorin Sanders	342-2245	9FF6836184	811 Colusa St	dbettenc	Bettencourt, Dave	Trees/Public Landscapes	Closed
Description: ELEVATED Street trees need pruning.									
dbettenc	11/01/2011	PO		9E1E0AC00A	1158 E 7th St	dbettenc	Bettencourt, Dave	Trees/Public Landscapes	Closed
Description: REMOVED HIGH PRIORITY Remove 6" CHL in sycamore.									



DATE: 12/6/11
TO: Bidwell Park and Playground Commission
FROM: Dan Efseaff, Park and Natural Resource Manager
SUBJECT: Park and Natural Resource Manager's Report

Prepared for verbal presentation at the BPPC meeting.

1. Updates

- a. Paragliding Proposal – Jon Stallman has withdrawn the proposal from the Bidwell Park Flyers to launch from Peregrine Point area, citing concern over the use of City resources, and waiting to see how our understanding of the bird's habits develop.
- b. Comanche Creek Update – Staff has been working on an interim management plan for Comanche Creek and will present the document to the Commission in January. The Southwest Neighborhood and the public continue to schedule volunteer weeding sessions and have scheduled for December 3 and 10.
- c. Occupy Chico – As of December 2nd, the Occupy Chico demonstrators have decided to no longer occupy the sidewalk of City Plaza overnight. They intend to set-up and take down an informational booth daily. Additionally, at this time they have decided not to move forward with a park permit application.
- d. Grazing Bid – Last fall the City of Chico Park Division put out a request for proposals for grazing cattle on the Foothill Preserve and Bidwell Ranch. The City received two bids and accepted the bid of Mr. Jerry Bradley of Durham to graze his cattle, starting as early as this month. The letter agreement is for 5 years.
- e. Water Quality Bid – . Upon consultation with the regional water quality control board, City staff has developed a revised testing approach for Sycamore Pool. With fewer testing sites needed and employing a different testing method, the City will be saving approximately \$29,000 a year in testing costs. The contract has been awarded to Fruit Grower's Laboratory, Inc.
- f. Portable Toilet Bid for the Park – In September the City entered into a new five year agreement with Ben Toilet Rental, Inc. to service the portable toilets throughout Bidwell Park and at the Wastewater treatment preserve area.

2. Planning/Monitoring

- a. Peregrine Point Disc Golf – Staff is working with the consultant in the selection of reference blue oaks (trees that are found within the area but not likely impacted from disc golf play. The reference trees will provide a basis of comparison with trees on the course fairways. We anticipate that the annual report will be available for BPPC review at the January or February meeting.

3. Outreach and Education

- a. Press Releases – The following news releases were released in November: Parking Lot E Closure for maintenance; and Wet Weather and Trails. The BPPC's Special Recognition of Chico Rotary for their work in Lost Park was highlighted in the 12/03/11 Enterprise Record's Community Spotlight section.
- b. Park Minute – Rangers will be recording several 60 second radio public service announcements called the "Park Minute" in the upcoming weeks. The Park Minute campaign presents topically relevant safety and educational information about Bidwell Park to the citizens of Chico. The one minute audio format is intended for play as public service announcements on local radio stations throughout the year. Currently, there are 13 "minutes" that will be recorded in English and Spanish with the possibility of adding additional topics as needed.

4. Upcoming Issues/Miscellaneous

- a. Smoking Ban in City Parks – the City Council's Internal Affairs Committee has requested that the BPPC consider a smoking ban in City Parks as proposed by the American Lung Association, which seeks a comprehensive policy regarding smoke free areas. The BPPC will be presented with more information at its 01/30/12 meeting for consideration of the proposed ban. The Internal Affairs Committee has also requested additional input from the Downtown Chico Business Association and the Chamber of Commerce.






- b. Bidwell Park Municipal Golf Course Restroom - The Golf Course is in the preliminary stages of a replacement ADA restroom on the course and will submit plans for BPPC review.

MAINTENANCE REPORT

1. General Activities

General: In November Park staff's focus has been on vegetation maintenance, installation of freeze protection on the west side fountain at Horse Shoe Lake and the burning and reseeding of the ten acre parcel along Upper Park road. Staff continues the daily cleaning and safety inspections of all recreation areas including: grounds, playgrounds, picnic sites, roads and paths coupled with the daily cleaning and resupplying of all park restrooms. Maintenance and repair of park fixtures, daily opening of gates, posting reservations, unauthorized camp clean up and the constant removal of graffiti from all park infrastructure.

Table: Summary of Monthly Maintenance Hours.

Category	Staff Hours	% of Total	% Change from Last Month	2011 Trend
1. Safety	293	29.2%	-9.7%	
2. Infrastructure Maintenance	457	45.5%	11.7%	
3. Vegetation Maintenance	119	11.8%	1.9%	
4. Admin Time/Other	135	13.5%	-3.9%	
Monthly Totals	1003	100%	0%	

2. Project Updates

Notable issues for this month include:

- a. **Middle and Upper Park:** Staff has seeded the burn area and along both sides Upper Park road from Wild Wood Park to parking lot C with a native grass seed mix. The freeze protection project for the west side fountain is complete. The planting and surface work on lot E is also nearing completion for this year. Middle Trail Grant is winding down for the year with the completion of section six and near completion of section one

Upcoming Projects: December should see the grading of lots C and B and the entrance enhancement of Woodland / Linden and Vallombrosa at Bryant.

RANGER REPORT

1. Updates and Announcements

- a. Staffing - Permanent Seasonal Park Ranger Lisa Barge will be going off duty for 3 months beginning January 1st and Ranger Verbrugge will return to duty.

2. Monthly Summaries

- a. Public Events

Date	Location	Event	# Participants
11-06-11	Lower Park	Almond Bowl	1150
11-12-11	Middle/Upper Park	Gobble Wobble	200
11-12-11	Lower Park	Girls on the Run	300
11-24-11	Run for Food	Lower Park	4077

Date	Location	Event	# Participants
		4	5727

b. Private Permits for Park Use – 4 permits issued.

c. Significant Incidents

On 12-03-11 Rangers, Fire and Medics responded to an injured person near Salmon Hole. The injured woman had slipped and fallen while hiking in the area, suffering injuries to her left ankle. She was splinted and carried up to the parking lot by stokes basket by safety personnel.

In addition to the incidents and citizen complaints about illegal activity at City Plaza and Lost Park, criminal activity at the Bidwell Bowl Amphitheater has increased. Rangers and Police TARGET team have been focusing their patrols in this area. The incidents included warrants, animal control violations, illegal camping, assaults, disruptive behavior, drug and alcohol activity, vandalism, and other suspicious circumstances.

Date	Location	Incident	Disposition
11-01-11	Lower Park	Assault/Annoy Child	Report Filed
11-05-11	Upper Park	Lost Person	Located
11-06-11	City Plaza	Vandalism/Assault	Arrest
11-07-11	City Plaza	Assault Police Officer	Arrested
11-12-11	Lower Park	Vandalism (\$6000)	Report Filed
11-18-11	Lower Park	Assault/Annoy Child	Report Filed
11-19-11	City Plaza	Missing Child Found	Report Filed
11-21-11	Middle Park	Accident/City Prop. Damage	Arrest
11-25-11	City Plaza	Petty Theft (Purse)	Report Filed
11-29-11	One Mile	Accident/City Prop. Damage	Report Filed

d. Citations

Offense	# Citations (Monthly)	# Warnings (Monthly)
Alcohol	6	1
Glass	0	3
Smoking	0	6
Illegal Camping	1	2
Animal Control Violations	6	45
Parking Violations	7	5
Bicycle Violation	0	58
Littering	0	3
Injury/Destruction City Property	1	0
Resist/Delay Park Ranger	0	1
Other Violations	0	44
Total	21	168

VOLUNTEER REPORT

1. Table: Summary of November 2011 Volunteer Activities.

Park Division Volunteers	Date/Place/Tasks/# Volunteers	Hours
Weekly Sessions	11-2/Annie's Glen/remove vinca, elevate grape and remove pokeweed & mulch/11 vols (33 hrs) 11-14/N. 1Mile/remove vinca and mulched/16 vols (48 hrs) 11-10/Site 8/remove blackberry and water native plants/10 vols (30 hrs) 11-8/ N. 1Mile/elevate grape and mulching/10 vols (30) 11-11/N. 1Mile/ Elevation & planting of corner area/10 vols (30 hrs) 11-12/Cedar Grove n. lot/remove hackberry and elm/9 vols (27 hrs) 11-16/Lost Park south/remove blackberry and privets/16 vols(48 hrs) 11-19/Sycamore Rest near Council ring/remove gopher and poke weed; sow grass seed and collect seeds of native plants for CHS/11 vols (33 hrs) 11/30/Site #8/site assessment for native success, remove blackberry/2 vols (6 hrs)	285
Sierra View Elementary	11-1/Site #27/removed vinca & ivy; mulched and water native plants/two 4 th grade classes total of 60 students & 14 adult volunteers (including CAVE)	77
Individual Volunteer Efforts		
Chico High School	11-1;11-6;11-28/Planting seeds/6 students and Paula	21
Ryan Brown and Seth Meyers	1.5 hrs caring for Native plants	3
Sigma Chi	Site 40/watered native plants, weeded and mulched/4-7 vols	18
Park Watch	Bidwell Park/Patrol and Nature Center docents	784
Independent Groups		
Renee Johnson & Chico Velo in partnership with the Park Division hosted the International Mt. Bicycling Association	11-12/Trail School in am and Middle Trail in pm/29 vols	87
Friends of Bidwell Park	Weekly/29 hours on bladder senna, 64 hours on Lost Park privets and 21 hours on privets elsewhere in Lower Park for a total of 114 hours.	114
Kids and Creeks	November/Sycamore Restoration site/removed vinca/211 vols (106 hrs)	106
Total Park Hours		1495
Park and Greenway Hours		
Kids and Creeks	October/9 th and Hazel/removed bindweed and Bermuda grass/139 vols (70 hrs) November/Verbena Fields/removed mustard 7 johnson grass and collected native plant seeds for CHS/258 vols (129 hrs)	199
Southwest Neighborhood	11-19/Commanche Creek/blackberry removal and clearing brush/17 vols	60

2. Updates

The Volunteer Coordinator met with Blue Oak Elementary School representative on 12/2/11 about their 6th grade class's adoption of the picnic site #6 for restoration.

3. Donations

Bill Orthel \$75.00 Council Ring maintenance

Attachments: Peregrine Point Disc Golf Course Observation Log

**Bidwell Park Disc Golf Log
2011**

Trails

Badge #	Date	Time	Open/Closed	#Vehicles	Weather	Notes
805	11/01/11	10:40 AM	O	3	Fair	
807	11/04/11	10:30 AM	O	3	Good	No violations observed, trash detail
806	11/04/11	5:45 PM	O	11	Good	A dozen players seen; no violations
807	11/05/11	10:45 AM	O	9	Fair	No violations observed
806	11/06/11	8:15 AM	O/C	0	Poor	Wet weather closure.
806	11/06/11	11:45 AM	C	1	Fair	Card left on vehicle; no one seen
805	11/07/11	8:00 AM	C/O	0	Poor	Opened course.
806	11/07/11	3:45 PM	O	5	Fair	Three seen, no violations observed.
805	11/08/11	7:45 AM	O	0	Poor	Opened trails.
806	11/11/11	5:32 PM	O	1	Fair	No one seen, sun set
806	11/12/11	3:55 PM	O	17	Good	2 alcohol cites
806/805	11/13/11	1:00 PM	O	8	Good	Multiple players observed.
807	11/15/11	4:20 PM	O	9	Good	1 leash warning
807	11/17/11	8:30 AM	O	0	Fair	No one observed
806	11/18/11	4:30 PM	O	4	Poor	2 hikers w/cameras seen
806	11/19/11	2:00 PM	O	16	Fair	2 alcohol warnings;one leash warning
806	11/20/11	1:30 PM	C	1	Poor	No one seen.
806	11/21/11	3:45 PM	C	1	Fair	No one seen
807	11/23/11	4:00 PM	C	7	Fair	Trash detail, 15 players advised of closure policy, 1 alcohol and 1 leash citation
807	11/24/11	12:30 PM	C	1	Poor	Person sitting in vehicle
807	11/25/11	10:30 AM	C	3	Fair	9 Players advised of closure policy
807	11/26/11	7:45 AM	C	0	Poor	No one seen, very foggy
805	11/27/11	9:30 AM	C	1	Poor	No one observed.
805	11/28/11	7:45 AM	C	1	Poor	No one observed.
805	11/29/11	8:30 AM	O	0	Fair	No one observed.
805	11/30/11	8:00 AM	O	0	Fair	No one observed.
807	11/30/11	3:00 PM	O	1	Fair	No one seen, very windy