



Public Works Department, Park Division
965 Fir Street
Chico, CA 95928
(530) 896-7800

Agenda Prepared: 6/16/2023
Agenda Posted: 6/16/2023
Prior to: 6:00 p.m.
Posting Location: One-Mile Oak Grove A & B

CITY OF CHICO
BIDWELL PARK AND PLAYGROUND COMMISSION (BPPC)

Special Meeting Agenda

June 19, 2023, 6:00 pm

Oak Grove A & B, One Mile Recreation Area, Bidwell Park

Materials related to an item on this Agenda are available for public inspection in the Park Division Office at 965 Fir Street, Chico during normal business hours or online at <http://www.chico.ca.us/>

1. SPECIAL COMMISSION MEETING

1.1. Call to Order

1.2. Roll Call

2. **SPECIAL AGENDA** - Pursuant to Government Code § 54954.3(a), the Commission is prohibited by law from considering any other business at this meeting.

2.1. REVIEW AND CONSIDERATION OF RECOMMENDATIONS IN THE LOWER BIDWELL PARK TRAFFIC AND CIRCULATION EVALUATION.

At its 5/22/23 meeting, the BPPC reviewed the recommendations in the draft multimodal circulation evaluation Headway Transportation conducted for Lower Bidwell Park. The Commission continued its review and discussion to this Special Meeting at the One Mile Recreation Area to review onsite the proposed circulation suggestions and measures.

Recommendation: The Park & Natural Resource Manager recommends the BPPC provide comments, recommendations, and/or direction to Staff.

3. ADJOURNMENT

Adjourn to the next regular meeting on July 31, 2023, at 6:00 P.M. in the Council Chamber of the Chico Municipal Center building located at 421 Main Street, Chico, California.



Please contact the Park Division Office at (530) 896-7800 if you require an agenda in an alternative format or if you need to request a disability-related modification or accommodation. This request should be received at least three working days prior to the meeting.



BPPC Staff Report

Meeting Date 6/19/23

DATE: 6/16/23
TO: Bidwell Park and Playground Commission (BPPC)
FROM: Linda Herman, Parks & Natural Resources Manager
SUBJECT: REVIEW AND CONSIDERATION OF RECOMMENDATIONS IN THE LOWER BIDWELL PARK TRAFFIC AND CIRCULATION EVALUATION.

REPORT IN BRIEF:

At its 5/22/23 meeting, the BPPC reviewed the recommendations in the draft multimodal circulation evaluation Headway Transportation conducted for Lower Bidwell Park. The Commission continued its review and discussion to this Special Meeting at the One Mile Recreation Area to review onsite the proposed circulation suggestions and measures.

Recommendation: The Park & Natural Resource Manager recommends the BPPC provide comments, recommendations, and/or direction to Staff.

BACKGROUND:

In the fall of 2022, Headway Transportation conducted a traffic and circulation study of Lower Bidwell Park, between Mangrove Avenue to the west and Manzanita Avenue to the east. The evaluation focused on the primary access points, roadways, major trails, and overall circulation. The primary purpose of the study was to:

- Review key conflict locations and City concerns regarding overall circulation and travel safety.
- Evaluate existing transportation facilities.
- Review parking and access points on Vallombrosa Avenue and Woodland Avenue.
- Provide potential improvement options for traffic management, bicycle and pedestrian access, and overall circulation.
- Review key conflict locations and concerns regarding overall circulation and travel safety.
- Evaluate existing transportation facilities.
- Review parking and access points on Vallombrosa Avenue and Woodland Avenue.

At its 4/24/23 meeting, the Commission reviewed and provided input on the 14 recommendations provided in the study. The Commission identified and prioritized the following recommendations for discussion at their 5/22/23 meeting:

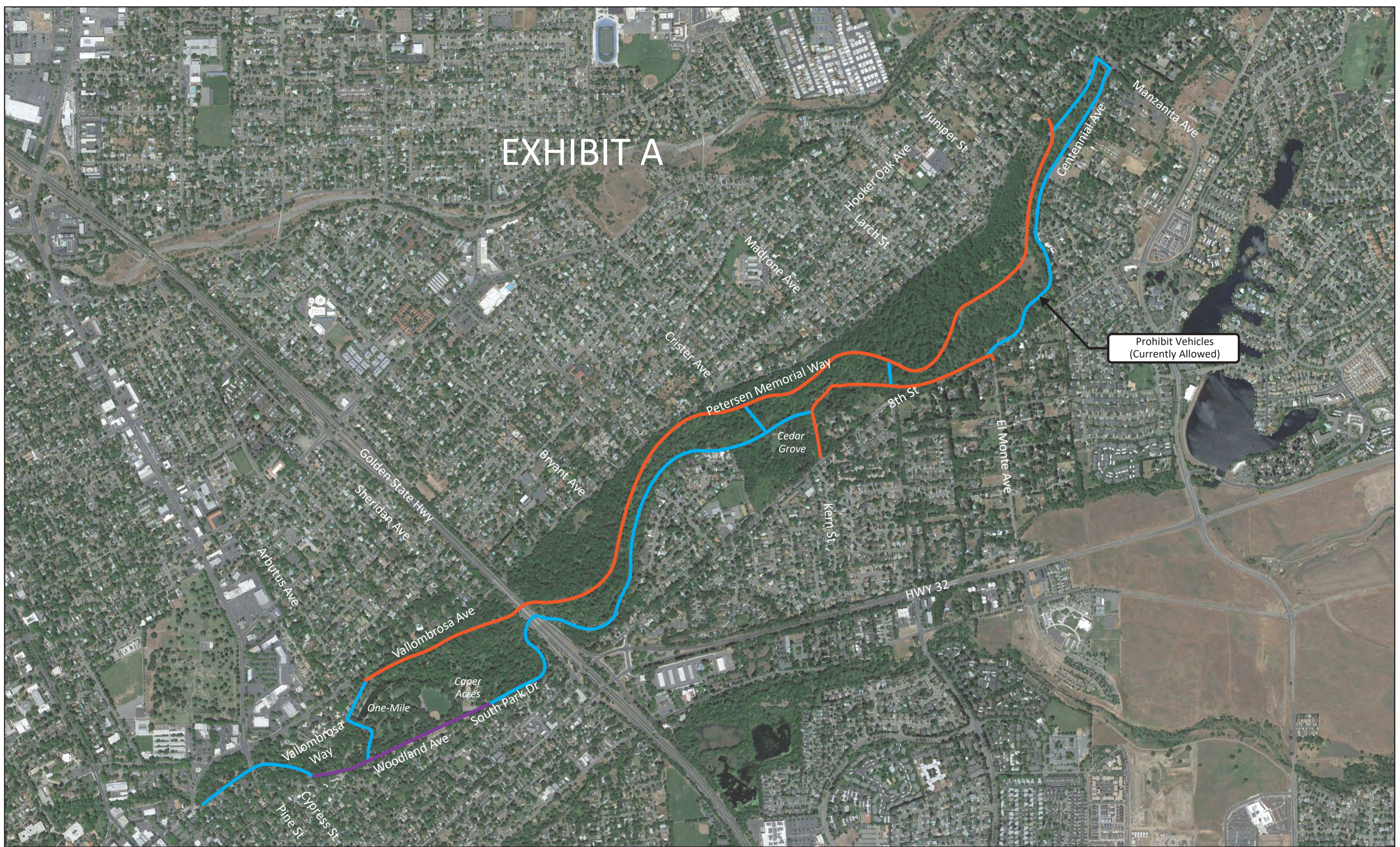
1. Establishing the circulation pattern and facilities as shown in purple in Figure 2 of the report.
2. Constructing a side-path design on South Park Drive (4th Street Entry) as shown in Figure 3.
3. Constructing pedestrian crosswalks/ADA accessible ramps at the 4th St./Woodland Avenue/South Park Dr. intersection.
4. Expanding vehicle parking at the One-Mile parking lot on Vallombrosa Way.
5. Prohibiting vehicular travel on South Park Drive between El Monte Avenue and Centennial Avenue, which would include relocating the existing ADA parking spaces onto 8th Street.

DISCUSSION:

Due to an upcoming project to repave Petersen and South Park Drives, the Commission decided to concentrate on how best to provide safe paths of travel for all forms of transportation in the most congested section of South Park Drive from the 4th Street entrance to the Caper Acres exit (Items 1 & 2). The BPPC requested a Special Meeting onsite in Bidwell Park to continue their discussions on this topic. Figures 2 and 3 referenced above are attached as Exhibit A.

Attachment: Exhibit A: Figures 2 and 3

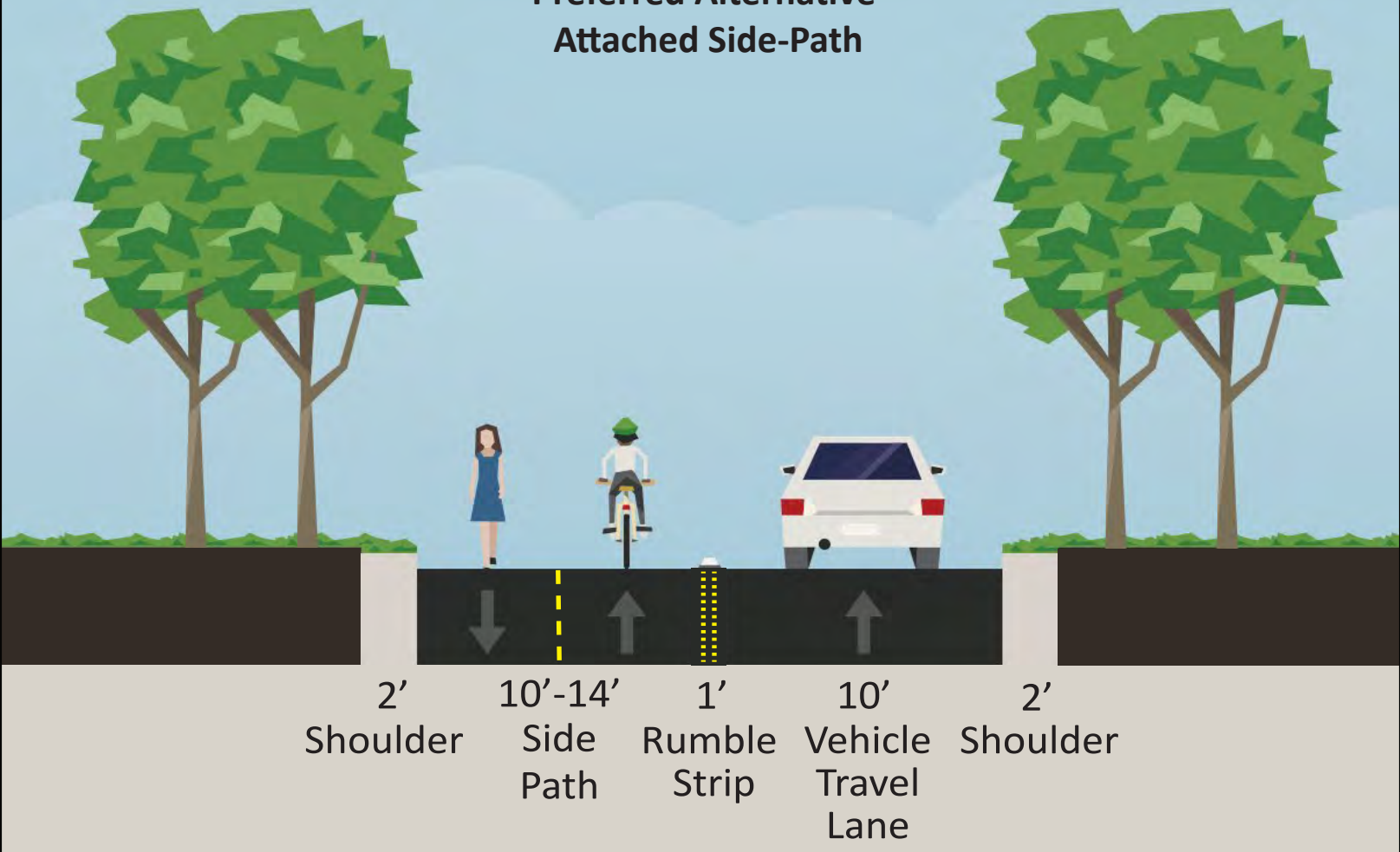
EXHIBIT A



Prohibit Vehicles
(Currently Allowed)

		<ul style="list-style-type: none"> — Multi-Use Path (Vehicle Traffic Prohibited) — Shared Street or Side-Path — Side-Path (Separated or Attached) 	<p>Notes:</p> <ol style="list-style-type: none"> 1. One-way vehicle traffic (counterclockwise) on roadways where vehicles permitted 2. Two-way bicycle and pedestrian traffic on all paths 	<ol style="list-style-type: none"> 3. Side-Path (purple) and Multi-Use Path (blue) Alternatives are required as shown 4. Shared Street Alternative (Orange) is proposed as shown. Orange Segments could be constructed with the Side Path configuration. 	<p>Figure 2 Lower Bidwell Park Traffic and Circulation Review Proposed Path and Roadway Types</p>
--	--	--	--	--	---

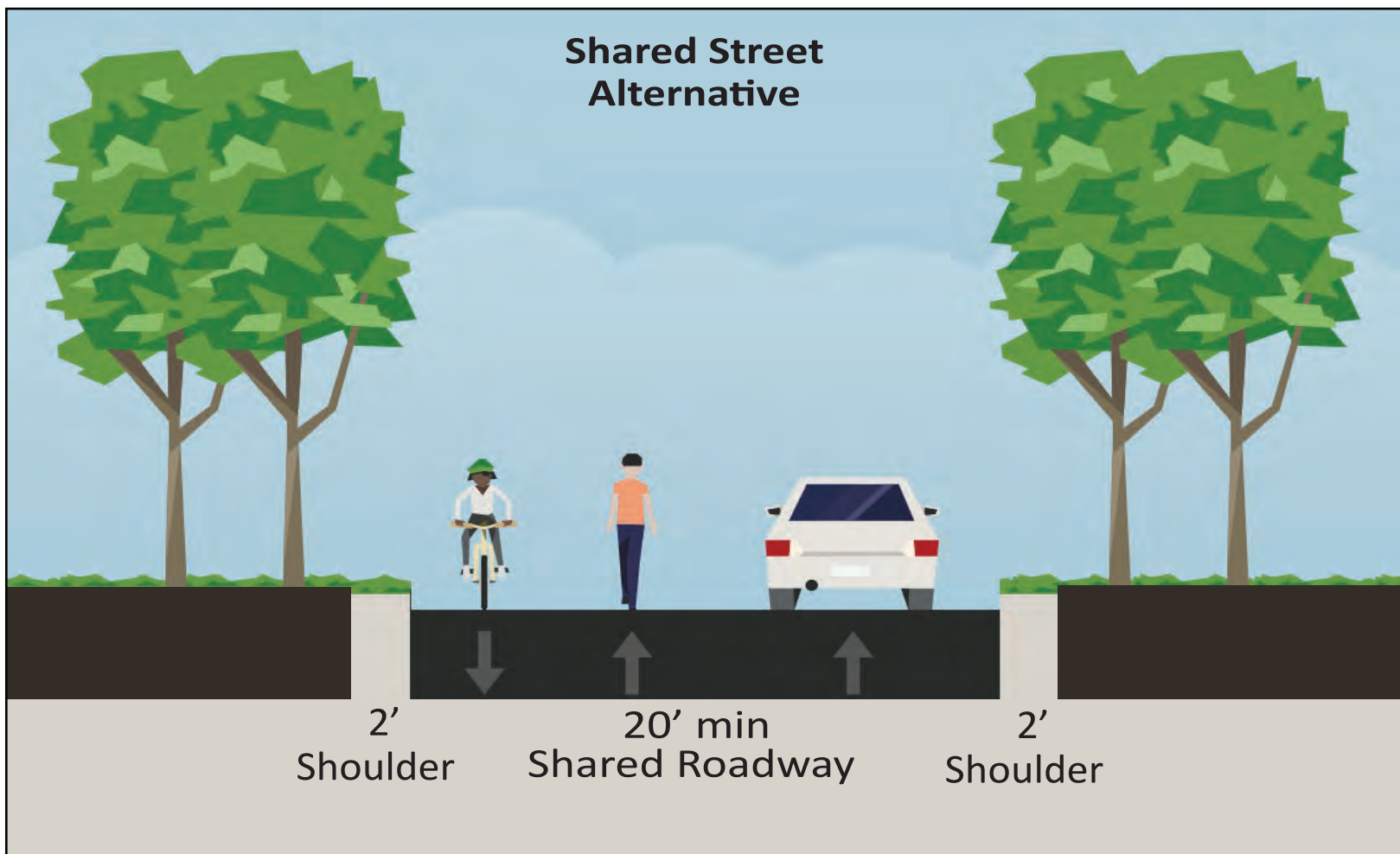
**Preferred Alternative
Attached Side-Path**



**Separated Side-Path
Alternative**



Shared Street Alternative



Multi-Use Path Alternative Vehicle Traffic Prohibited

