

ENCROACHMENT PERMIT EROSION CONTROL PLAN



Clearly show the project layout and location of each BMP being used in the box below.  
(Please see the example on the other side of this document).

Property Address: \_\_\_\_\_ Total Area Disturbed: \_\_\_\_\_ft<sup>2</sup>.

Requirements:

- 1. The plan must include measures to prevent erosion, contain sediment and control drainage.
- 2. Soils tracked into streets shall be cleaned up at the end of each workday.
- 3. If there exists a storm drain inlet withing 25' of the project site, an approved inlet protection device shall be installed.
- 4. Inactive soil stockpiles shall be covered. Active stockpiles shall be covered prior to a forecasted rain event.
- 5. The Erosion Control Plan shall be re-evaluated and adjusted accordingly as site changes occur and after rain events.
- 6. Erosion control measures shall be maintained.
- 7. The concrete washout location **must** be shown on the Erosion Control Plan. Washing of concrete equipment/tools at any other location than a designated concrete washout is a violation of law and subject to fine.

If not used, please briefly explain why: \_\_\_\_\_

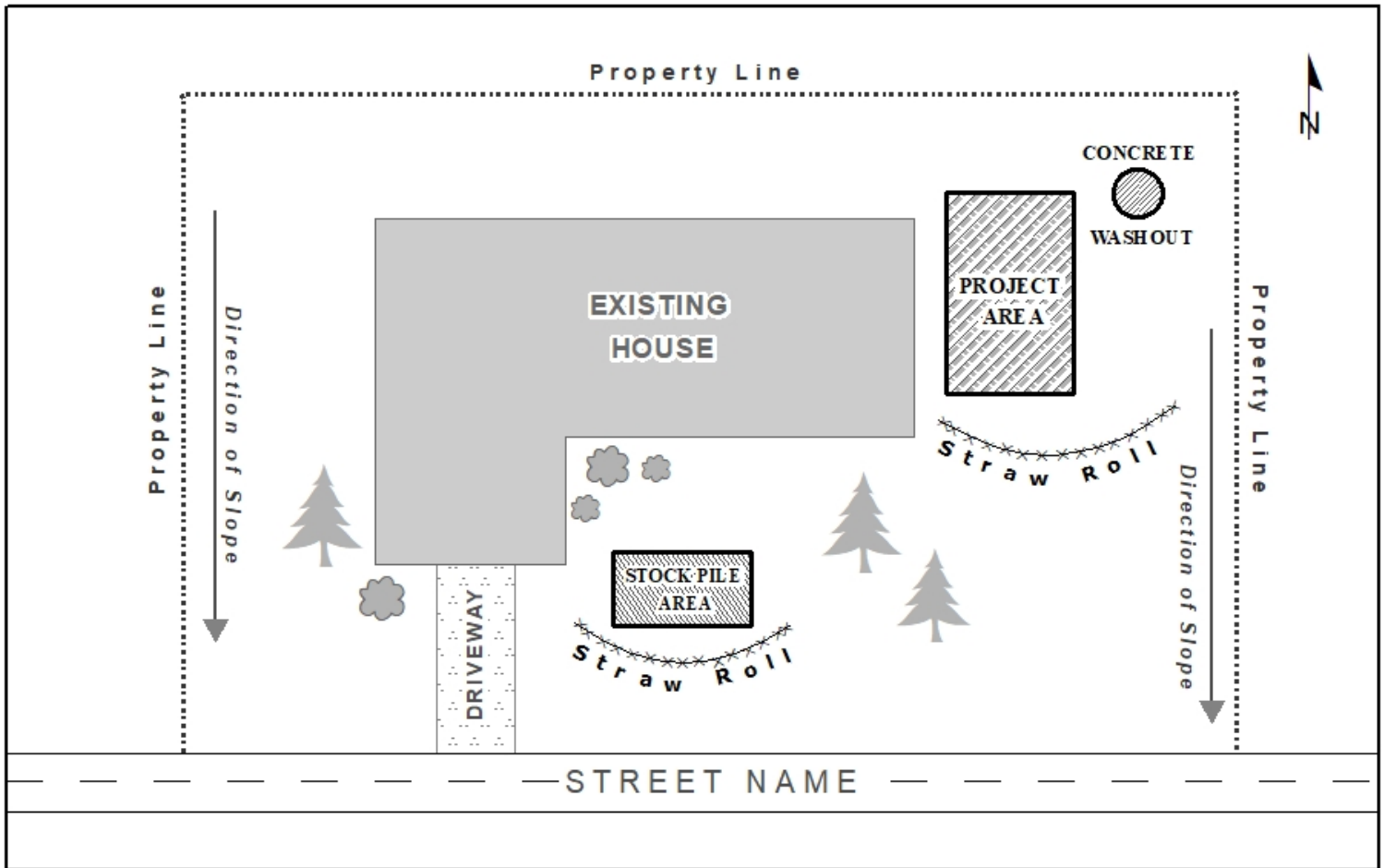
I AGREE TO COMPLY WITH THIS EROSION CONTROL PLAN

Signed: \_\_\_\_\_ Date: \_\_\_\_\_

Phone: \_\_\_\_\_ Email: \_\_\_\_\_

# EXAMPLE DIAGRAM

Please be sure to show the basic site layout, the project location, the placement and type of each BMP to be used, and any reference information such as direction, street name, etc.





# CONSTRUCTION CHECKLIST

## ONLY RAIN DOWN THE STORM DRAIN



- ☐ 1. Conduct daily site inspections.
- ☐ 2. Maintain construction entrance/exit and conduct street sweeping to prevent sediment leaving the construction site.
- ☐ 3. Protect landscaping and stockpiled soil materials from wind and rain by storing them under tarps.
- ☐ 4. Label and store hazardous materials in sealed containers and on top of secondary containment.
- ☐ 5. Cover open dumpsters securely with a tarp when not in use or if raining.
- ☐ 6. Inspect portable toilets for leaks and place them within the construction site.
- ☐ 7. Install perimeter controls around the site, such as staking fiber rolls into the ground or installing silt fences.
- ☐ 8. Protect all nearby storm drains, such as installing filter fabric or using gravel bags, to prevent sediment from entering the drain during construction. Sand bags may be temporarily removed if flooding will occur because of them.
- ☐ 9. Provide a contained and lined washout for washing concrete, paint, or stucco.
- ☐ 10. Keep the Storm Water Construction Pollution Prevention Permit at the work site.
- ☐ 11. Educate workers about these best management practices.

When it rains, storm water washes over the loose soil and debris on a construction site. As this water flows over the site, it can pick up pollutants like sediment, oil, and cement wash and transport them to a nearby storm drain. Our storm drains connect to local creeks and anything that enters these drains will flow directly into our creeks. That's why it is important to have proper storm water protection in place so that construction can proceed in a way that protects our water and the environment.

The City of Chico Storm Water Management and Discharge Control Ordinance (CMC 15.50) establishes water pollution control and prevention requirements for construction and other activities. Dumping or discharge into the storm drains is prohibited. Construction sites are required by law to prevent pollutants from leaving the construction site.

## CITY OF CHICO

Public Works Department  
411 Main Street Chico CA 95928  
Phone: 530-879-6900  
Website:  
[www.chico.ca.us/post/storm-water-management](http://www.chico.ca.us/post/storm-water-management)



## BEST MANAGEMENT PRACTICES FOR CONSTRUCTION SITES





# 10 Steps to Prevent Stormwater Pollution at Your Construction Site

*Keep it clean! Spills and sediment from work sites can flow into storm drains and pollute local creeks.*

- 1 Protect Any Areas Reserved for Landscaping or Infiltration and Preserve Existing Trees**  
Save time and money by preserving existing mature trees during construction. Protect stockpiled landscaping materials from wind and rain by storing them under tarps all year-round. This will help stabilize the construction site and minimize the amount of runoff during and after construction activity.

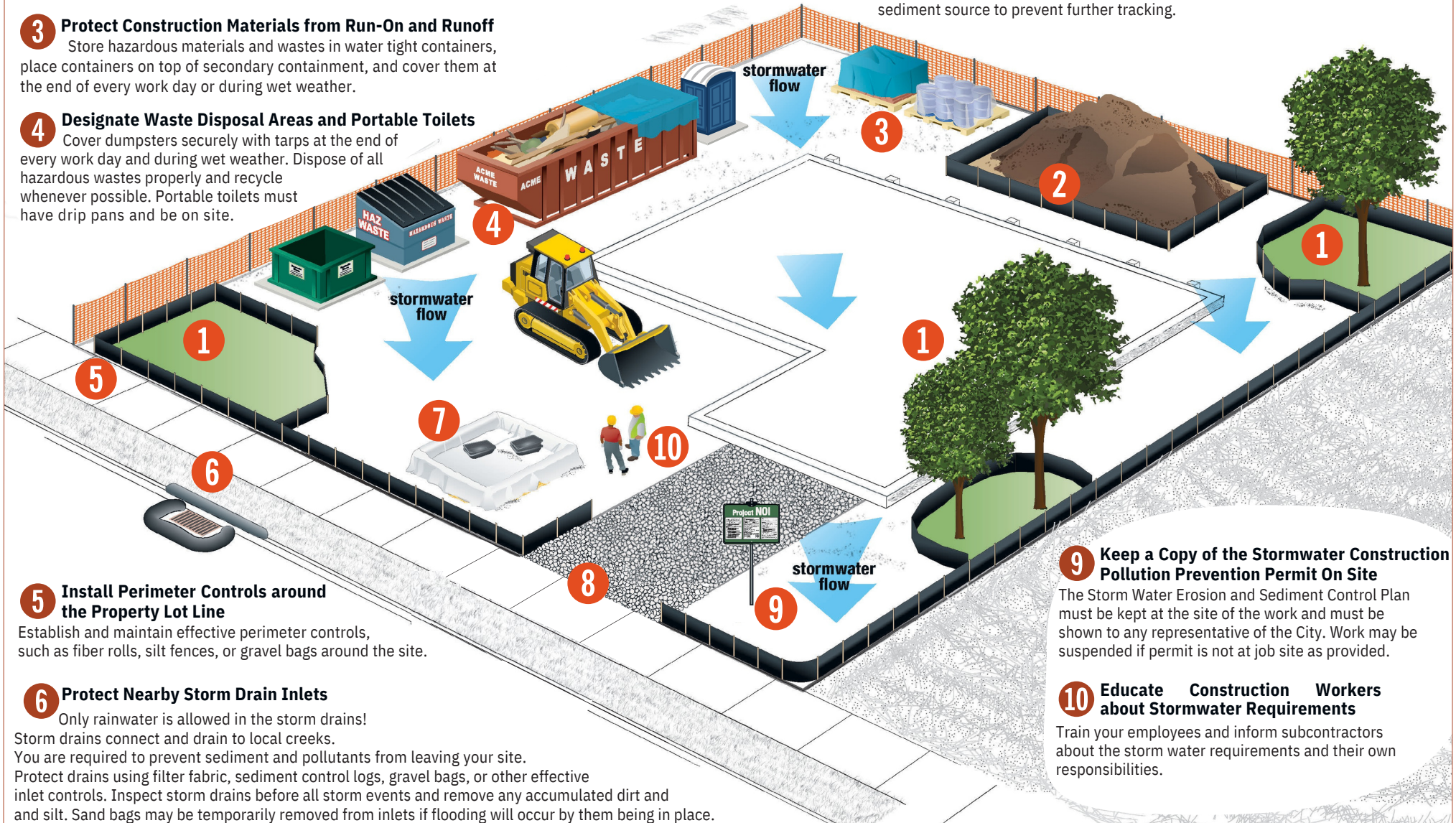
- 2 Stockpile Your Soil**  
Operators should protect all soil storage piles from run-on and runoff. Berm and cover stockpiles of sand, dirt, or other construction material with tarps when rain is forecast or if not actively used.

- 3 Protect Construction Materials from Run-On and Runoff**  
Store hazardous materials and wastes in water tight containers, place containers on top of secondary containment, and cover them at the end of every work day or during wet weather.

- 4 Designate Waste Disposal Areas and Portable Toilets**  
Cover dumpsters securely with tarps at the end of every work day and during wet weather. Dispose of all hazardous wastes properly and recycle whenever possible. Portable toilets must have drip pans and be on site.

- 7 Install a Concrete/Stucco Washout Basin**  
Designate a leak-proof basin lined with plastic for washing out used containers of concrete, paint, or stucco. Never wash excess concrete, paint, or stucco residue down a storm drain or into a creek!

- 8 Maintain and Stabilize All Construction Entrances and Exits**  
Minimize sediment track-out from vehicles exiting your site by maintaining an exit pad made up of crushed rock spread over geotextile fabric. If sediment track-out occurs, sweep or vacuum any street tracking immediately and secure sediment source to prevent further tracking.



- 5 Install Perimeter Controls around the Property Lot Line**  
Establish and maintain effective perimeter controls, such as fiber rolls, silt fences, or gravel bags around the site.

- 6 Protect Nearby Storm Drain Inlets**  
Only rainwater is allowed in the storm drains! Storm drains connect and drain to local creeks. You are required to prevent sediment and pollutants from leaving your site. Protect drains using filter fabric, sediment control logs, gravel bags, or other effective inlet controls. Inspect storm drains before all storm events and remove any accumulated dirt and silt. Sand bags may be temporarily removed from inlets if flooding will occur by them being in place.

- 9 Keep a Copy of the Stormwater Construction Pollution Prevention Permit On Site**  
The Storm Water Erosion and Sediment Control Plan must be kept at the site of the work and must be shown to any representative of the City. Work may be suspended if permit is not at job site as provided.

- 10 Educate Construction Workers about Stormwater Requirements**  
Train your employees and inform subcontractors about the storm water requirements and their own responsibilities.