



TOWN OF PARADISE SEWER PROJECT

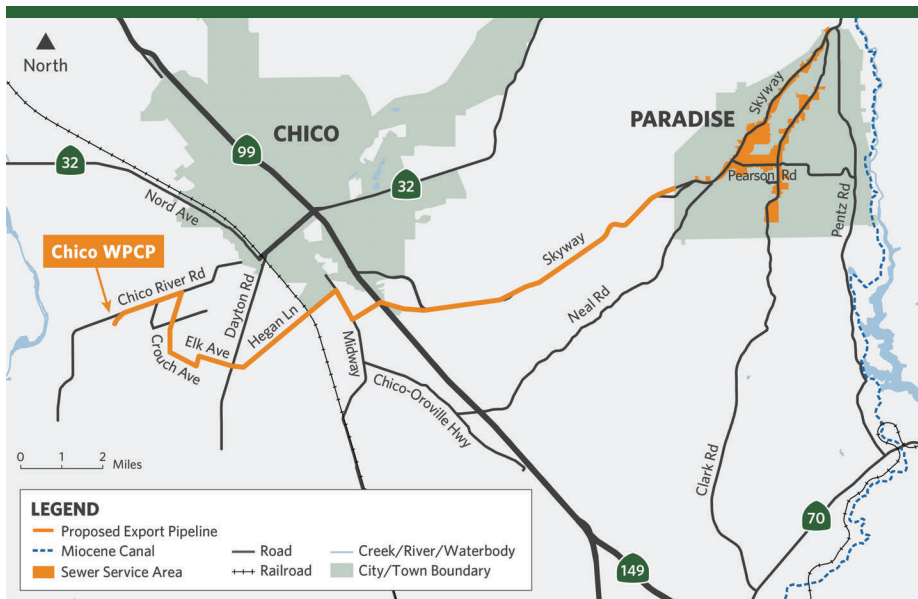
FACT SHEET

JULY 2021

PROJECT OVERVIEW

Since its incorporation in 1979, the Town of Paradise has sought a wastewater treatment solution, with a focus primarily on commercial and densely-populated residential areas — the portions of Paradise most vulnerable to groundwater degradation and economic stagnation due to sewer limitations.

In 2020, the Town contracted with HDR, an engineering consulting firm, to prepare an updated assessment of project options. The assessment compared two alternatives for local wastewater treatment and discharge with a regional alternative involving piping wastewater to the Chico Water Pollution Control Plant (WPCP). The regional alternative was recommended because it had the lowest cost, community impacts, probable environmental impacts as well as the simplest operations and most support from the Central Valley Regional Water Quality Control Board. The Town is now moving forward with preparation of a full Environmental Impact Report (EIR) to provide further information on sewer project alternatives.



The proposed project is currently estimated to cost approximately \$184 million.



\$2M
EIR



\$30M
Design and Right-of-Way



\$152M
Construction

PROJECT SCHEDULE



STAY UPDATED!



[PARADISESEWER.COM](https://paradise-sewer.com)



[INFO@PARADISESEWER.COM](mailto:info@paradise-sewer.com)



530-872-6291
EXT. 112

REBUILDING PARADISE

ECONOMIC BENEFITS OF THE PARADISE SEWER PROJECT

PROVIDE MUCH NEEDED HOUSING



Workforce housing needs

- 95% of residents work for local employers
- 10% of the region's construction workforce was housed in Paradise



Sewer infrastructure supports quick rebuild

- Increases affordable housing
- Greater economic return for developers

INCREASE PROPERTY VALUES & BUSINESS PROFITABILITY



Septic systems decrease value

- Smaller, older residential lots on septic systems have a lower value, lack development potential
- Businesses on septic systems have higher operational costs



Sewer infrastructure supports growth

- Raises the value of land in the SSA
- Provides reliable wastewater disposal
- Lowers the start-up costs for high-water-usage businesses like restaurants

IMPROVE HEALTH & THE ENVIRONMENT



Regulations mitigate risk

- Strict regulations govern the discharge of treated wastewater, especially in communities impacted by failing septic systems development potential



Sewer Infrastructure protects resources

- Provides cleaner disposal of wastewater
- Improves groundwater quality
- Decreases health impact on communities

ADDITIONAL BENEFITS



Less strain on Chico's housing market, Greenline, transportation infrastructure, and other systems



Regional partnerships and opportunities for additional funding