



NICO PROJECT

BALANCE & POPE CLIMB

ACCESSIBLE PATH & SOUTH R.I.M.

ZIP LINE / OVERLOOK



Caper Acres Renovation Master Plan

Submitted to: **The City of Chico**, August 20, 2014

Submitted by:

MELTON DESIGN GROUP

Landscape Architects & Planners
 309 Wall Street, Chico, CA 95928
www.meltondg.com p530.899.1616



Acknowledgements

City of Chico - Parks & Natural Resources

411 Main Street
Chico, CA 95928

Melton Design Group

309 Wall Street
Chico, CA 95928

Bidwell Park & Playground Commission Caper Acres Committee

411 Main Street
Chico, CA 95928

CSUC Planning Department

400 W 1st St.
Chico, CA 95929

The Kindergardeners of Room 12 & Jennifer Rossovich (Teacher) Hooker Oak School

1238 Arbutus Ave
Chico, CA 95926

General Public



Site Summary

Caper Acres has had a tough run since its last remodel in the mid 90's. This master plan represents a combination of upgrading old equipment, long awaited maintenance to the site and infrastructure, replacing run-down buildings and bringing the playground to a new and exciting level.

The following document represents the process that the design went through to accomplish this new master plan. It started with public meetings representing a combination of ideas from members of the communities, teachers and students, interviews of moms and dads, city & staff, consultants, and most importantly the children of Chico. We reviewed many other playgrounds and new playground equipment and came up with some fun ideas that fit into the theme of Caper Acres and Bidwell Park. Some great ideas came from students at our schools and generational families remembering Humpty Dumpty and wanting to keep the dream of Caper Acres alive. The design went through reviews from the BPPC committee, general public and city staff.

Please enjoy the new master plan ideas and see that Caper Acres is maintaining its history as well as expanding as a family play area with opportunities for play, adventure, creativity, education and the interpretation of folk lore along with local culture. Some of the new elements include Monkey Face climbing play area, Robin Hoods Lair zip lines and characters, new and creative swings, revitalization of the Castle and Bird house and many other new and exciting fun elements.

Please enjoy the document and know that it is still a master plan.



Caper Acres Renovation

Table of Contents

Public Meeting Results.....	1
Site Analysis.....	2
Preliminary Master Plan.....	3,4
Cost Analysis.....	5,6
General Site Improvements.....	7,8
#1 Birthday Ring 'A' Big Land.....	9,10
#2 Central Play Open Space.....	11,12
#3 The Birdcage.....	13,14
#4 Main Entrance.....	15,16
#5 The Arrival.....	17,18
#6 Parking Lot Improvements.....	19,20
#7 Nico Project.....	21,22
#8 Restroom.....	23,24
#9 Sand Play (Humpty Dumpty).....	25,26
#10 The Swings.....	27,28
#11 Castle.....	29,30,31,32
#12 Swiss Cheese & Area.....	33,34
#13 Crooked House.....	35,36
#14 Birthday Ring 'B' Robin Hood.....	37,38
#15 Mining Tunnels / Monkeyface.....	39,40,41,42
#16 Robin Hood's Lair.....	43,44
#17 Revegetation.....	45,46



RESULTS OF PUBLIC MEETING #1

WHAT DOES THE CAPER ACRES PARK MEAN TO CHICO COMMUNITY ?

- FANTASY WORLD
- FAMILY TRADITION THROUGH GENERATIONS
- FREE FLOWING - EASY FLOW BETWEEN DIFFERENT ELEMENTS
- KIDS PARTIES/FAMILY - FRIENDS GATHERING
- FAMILY CONNECTION
- THE DESTINATION
- FOSTER IMAGINATION
- UNIQUE
- A SPECIAL PLACE IN CHICO
- AN OPPORTUNITY TO ADD A CHARACTER TO NURSERY RHYME THEME

WHAT ARE THE CONSTRAINTS OF THE CAPER ACRES PARK ?

- THE TUNNELS
- WOOD DETERIORATION
- BATHROOM
- VISIBILITY
- MISSING THE "WOW" FACTOR
- IRRIGATION
- DRAINAGE
- FENCING
- PAINTS ON STRUCTURES
- PLANT MATERIAL AND GRASS
- LIGHTING
- ADA ACCESSIBILITY
- LIONS FOUNTAIN TO BE FIXED

WHAT TO CONSIDER ?

- KIDS INPUT - ELEMENTARY CLASSES
- PUBLIC SURVEY

CHICO COMMUNITY IDEAS:

ELEMENTS:

- BIRD WATCHING TOWERS - PART OF THE CASTLE W/ INTERPRETIVE PANELS TO SHOW KIDS WHAT TO LOOK FOR
- MORE SWINGS
- CLIMBING WALL
- WATER FEATURE-WATER PLAY STRUCTURE
- CHALK BOARD-VERTICAL SURFACE
- CHALK BOARD ON GROUND W/PANEL OF DIFFERENT GAMES W/ INSTRUCTIONS TO DRAW AND PLAY
- LOCAL ARTIST SUPPORT - PAINTING OPPORTUNITIES
- MORE CROOKED HOUSES - LINKED TOGETHER WITH ROPES AND CLIMBING STRUCTURES
- A MOUSE MAIZE TO FIND THE CHEESE (POSSIBLE IN-GROUND RAILS" FOR ATTACHED BIKES - ANIMAL MOTIVE (TOM AND JERRY) TO BE ABLE TO CHASE EACH OTHER
- ROCKET SHIP
- CHECKERBOARD ON PAVEMENT (BIG SCALE) OR SMALL ENGRAVED BETWEEN PARENT'S SEATING
- TWISTER W/ BIG SPINNER
- MORE B-DAY RINGS
- RENOVATE THE LOCKSLEY CASTLE W/SLIDES AND CLIMBING ROPE ADDITIONS
- ACORNS (TUNNELS) AND LOGS AND MUSHROOMS ALL OVER THE SITE
- BATHROOM REMODEL IN THEME OF A CASTLE
- MINIATURE BEAR HOLE AND MONKEY FACE
- A TREE FOR CLIMBING
- TUNNELS - LOGS, ROCKS/COAL MINE EXIT
- FOSSIL OR OTHER TREASURE SAND AREA TO BE ADDED TO EXISTING SAND BOX
- MERRY-GO-ROUND BETWEEN THE CHEESE AND THE SWINGS
- ADD DIGGING AREA AND DIGGING TOOLS = AG THEME

THEMES:

- TOM SAWYER ISLAND - WATER PLAY STRUCTURE
- CHARLOTTE'S WEB ROPE STRUCTURE
- JUNGLE BOOK
- JACK AND THE BEANSTALK CLIMBING STRUCTURE
- DR. SEUSS MOTIVES -LITTLE PLANT NURSERY/PLANTING MORE TREES
- ROBIN HOOD OF SHERWOOD - FOREST NEAR THE CASTLE - OUTSIDE THE PERIMETER OF THE PARK
- RENOVATE THE LOCKSLEY CASTLE W/SLIDES AND CLIMBING ROPE ADDITIONS
- WINNIE THE POOH
- OLD WOMEN WHO LIVED IN A SHOE W/SLIDES TO THE SHOE
- GOOD NIGHT MOON AND NURSERY RHYME THEMES
- ALICE IN WONDERLAND

RESULTS OF PUBLIC MEETING #2:

CAPER ACRES WALK THROUGH:

- Restroom Remodel – with an addition of a baby changing station in men's restroom
- "Nico" Project – failing compaction under soft tiles, falling tiles = water pooling in certain areas/ seam falling = trip hazard. Not easy maintenance - (washing every week required)
- Lighting system – lack of safety due to lack of light fixtures
- Crooked House remodel
- Castle Remodel
- Keep water on during winter – public request
- Irrigation
- Eliminate certain grass areas
- Re-vegetate – slow old tree elimination
- Fence – no chain link – it is not a tennis court
- Keep age appropriate play – bigger rope towers for bigger kids and more agility play elements
- More interactive paths with better connection between elements(Wizard of Oz – yellow brick)
- Keep but reconstruct the tunnels
- Humpty – keep more attractive/colorful
- Building Tree House
- Bird Watching Towers with telescopes/ vegetation observation through interpretative panels – educational impact.
- Bring more schools to the park for classes.
- Interpretative panels, kiosk all over the site with history of Caper Acres and time changing displays
- Add more swing and create entertainment for kids waiting for swings
- Add more slides incorporated in separate elements (Old women who lived in a shoe = slide on top of a shoe)
- Add twister
- Add see saw
- Raised the entry height and accent with colorful flags
- B-day rings – more colorful displays (use of mosaic tiles – like it was in the past) on outside and inside of fencing. Install more durable material – keep themes for individual rings. Add more tables/benches
- Add Three Blind Mice theme to the cheese



CAPER ACERS RENOVATION 2014

PUBLIC MEETING RESULTS

"CREATING FUN FOR THE NEXT GENERATION"





- CIRCULATION PATH
- HIGH ACTIVITY USE AREA
- MEDIUM ACTIVITY USE AREA
- PASSIVE PLAY AREA WITH NATIVE GRASSES
- EDUCATIONAL AREA
- ELEMENT FOOTPRINT
- ACTIVE CIRCULATION

SOUTH PARK DRIVE



CAPER ACERS RENOVATION 2014
USE ANALYSIS

"CREATING FUN FOR THE NEXT GENERATION"



BIRTHDAY #1 THE SHIRE

- ANALYSIS**
- FENCE ROTTING / UNSEEN / DRAINAGE
- CONCEPTS**
- FIELD STONE WALL TO REPLACE ENTRY WALL
 - ENHANCE ROUND HOBBIT TYPE DOOR
 - NEW OCCUPANTS GRASSY SURFACE
 - ENHANCE EXISTING STONE WINDOW

BIRDCAGE

- ANALYSIS**
- WOODCAGE FOOTING SHIRT WITH WATER TANK
 - SIDE JOINTS SHIRT WAY NEED TO REPLACE
 - TUNE TO SUBS WORKERS
 - BIRD FOOTING NOT
- CONCEPTS**
- REPLACE WOOD WITH STEEL STRUCTURE
 - OPEN VIEW TO REST OF PLAYGROUND
 - CONCRETE SEAT WALL AROUND WOODCAGE
 - REDUCE BY SIZE
 - SMALL BAMBINOSEAS SEATING PAMP OF SEAT WALL

ENTRANCE

- ANALYSIS**
- ADDRESS EASY CLIMBING PARTS OF BLOCK
 - NEED CONCRETE ENTRANCE
 - ENTRY ARCH - GRIND TO MAKE CORNERS ROUND
 - CHAIN POST BARRIER - HAZARD / MAINT. PROBLEM
 - BETTER ENTRY PATHS - D.G. WITH STEEL EDGE
 - CHURNED BASALT (BLACK OR CONCRETE WOOD FORMS)
 - LIGHTER COLOR MATCH EXISTING
- CONCEPTS**
- FLAG POLE
 - REASON ENTRY PATH
 - REPAIRING MOAT, CORNER SWALL, BUNCH GRASS
 - HISTORIC INTERPRETIVE TIMELINE
 - NATIVE VEGETATION FROM - KEEP LOW (LINE OF SPI (2)
 - ADD PICNIC TABLES
 - REPLACE CHAIN LINK WITH ORNAMENTAL WOOD FENCE
 - INCREASE SIZE OF CONCRETE CIRCLE / ADD SEAT WALLS
 - ADD PATH AROUND POSE FENCE LINE WITH INTERPRETIVE PANELS
 - ADD ROCK

PARKING LOT

- ANALYSIS**
- NEED MORE EFFICIENT USE OF EXISTING LAYOUT
 - SHAPE IS AWKWARD
 - ADDRESS BUS ACCESS/DROP OFF
 - ONE WAY NOT EASILY RECOGNIZED
 - SIGN BUSHES TOO WELL, CREATE MORE PLANTING
 - SUMMER / SPRING - PARKING LOT FULL ALL YEAR
- CONCEPTS**
- LATEST FENCE AND PLANTING TO BETTER DIRECT TRAFFIC
 - SIGNAGE - BUS STOP OFF DRAFT, PARK PERMITS
 - PROVIDE ENTRY MONUMENT OF CARP ACRES
 - CHARACTERE MYSTIFY CHILDREN TO PLAY

NICO PROJECT

- ANALYSIS**
- FOUNDED IN PLACE FULL MATERIAL
 - DIFFICULT TO MAINTAIN
 - SUB-GRADE NOT COMPACTED WELL
 - AREA IS A LITTLE LOW
- CONCEPTS**
- REPAIR AS IS FOR USE OF STRUCTURE
 - ADD SHOE CLEANER MAT
 - ADD SHADE TREES
 - ADD SEATING

RESTROOM

- ANALYSIS**
- NOT STRUCTURALLY SOUND
 - HALLWAYS NOT NECESSARY
 - EASIER MAINTAIN
 - NEED TO BE HOSIERS
 - MORE STORAGE
 - NUMBER OF STALLS (4)
 - NEEDS GOOD LIGHT, VENTILATION
- CONCEPTS**
- REPLACE WITH CONCRETE OR CHU BLOCK
 - INCREASE SIZE FOR STORAGE
 - INCLUDE CHANGING TABLES
 - KEEP CASTLE THEME OF CHANGE
 - PROVIDE MAINTENANCE ACCESS AT THIS LOCATION

SAND PLAY (HUMPTY-DUMPTY)

- ANALYSIS**
- SAND NEEDS CLEANING DAILY
- CONCEPTS**
- ADD HUMPTY DUMPTY STAGES / STORY LINE
 - CRACKED EGG - ALL THE KING'S HORSES ...
 - FOSAL FENCE - PRECAST CONCRETE
 - LARGE ROLLERS IN MIDDLE IN AT TANK
 - PRE-CAST CONCRETE LOGS AND HUBHOODS IN LANDSCAPE
 - ADD WATER F
 - SEAT WALL F
 - RESTORE HUMPTY DUMPTY AND WALL PAINT
 - ADD ADULT AND KID SIZED TABLES

SWINGS

- ANALYSIS**
- NEED MORE AND NEED TO BE ACCESSIBLE
 - WOOD WALL DIFFICULT TO MAINTAIN
- CONCEPTS**
- REPLACE WOOD CHIP RETAINING WALL WITH CONCRETE SEAT WALL
 - MIX OF TODDLER AND REGULAR SIZES AT NEW AND EXISTING
 - PRE SWING F
 - UNIQUE OPTIONS F
 - ACCESSIBLE SIDE

CASTLE

- ANALYSIS**
- (3) DRAINAGE COOP
 - WOOD DECK AND CRAWL SPACE PROBLEM IN PAST
 - WALL FOOTINGS EXPOSED
- CONCEPTS**
- ENHANCE ENTRY - FLAG, MOAT WITH TROU, AND ALIQUOT (PRE-CAST CONCRETE)
 - SETTING / JUMPING STONES FRAME ENTRY
 - PRE-CAST CONCRETE GOBLINS & ANIMALS AROUND CASTLE
 - BRACKEN EMBLEM PRE-CAST CONCRETE
 - DOORS TO BE METAL MESH PANELS
 - TRIPLE SLOPE IN
 - NEW CONCRETE BRIDGE
 - 2P LINE AND BALANCE BEAM ATTACHMENTS
 - TOWER ADD - TWO STORY TUBE SUE
 - COVER EXPOSED FOOTINGS
 - WOOD CHIP INTERIOR FILL MATERIAL
 - SYNTHETIC GRASS FILL MATERIAL, OUTSIDE WALLS (BUB COVERED AT MOAT)
 - PROVIDE ACCESSIBLE ELEMENTS
 - ADD SHADE TREES

SWISS CHEESE BLOCK

- ANALYSIS**
- RETAIN / GREAT FEATURE / EASY TO MAINTAIN
 - RETAIN PICNIC TABLES (POPULAR SHADED SEATING AREA FOR PARENTS)
- CONCEPTS**
- ADD 3 SURF MIX (PRE-CAST CONCRETE) AND MAKE TO CHEESE PAGES

CROOKED HOUSE

- ANALYSIS**
- DIFF NOT PRESENT
 - WOOD LEAKS
 - TALL MATERIAL CAN'T TOUCH WOOD
 - NOT ABLE TO BE IN SIDE / SECURITY PROBLEM
- CONCEPTS**
- REFLECT WITH TWO CROOKED HOUSES WITH ROPE (WED. CABLE BRIDGE)
 - OPEN AIR STRUCTURE LIKE BRIDGECAGE
 - HANDICAP ACCESSIBLE BOARDER SUE
 - SECOND STORY SUE
 - CLIMBING WALL ON OUTSIDE
 - ADD CROOKED MAH, CAT AND HOUSE FROM (PRE-CAST CONCRETE)
 - WITH NARROW SHYNE INTERPRETIVE PANEL
 - SPEAKING TUBES
 - ADD WATCHTOWER VENTIS AND INTERPRETIVE PANEL
 - CONCRETE SEAT WALLS WALLS TO STAIRS WOOD CHIPS

BIRTHDAY #2 ROBIN HOOD'S LAIR

- ANALYSIS**
- (2) STRUCTURE WORKS WELL
 - NEED TRASH CAN
 - KEEP TABLES MOVABLE, BUT ADD SEATING - (NOT MUCH ROOM)
 - ADD BENCHES TO WOOD FENCE
- CONCEPTS**
- WOOD FENCE
 - JUNGLE THEME WITH OLD DRINKING FOUNTAIN (W/IN IS SCULPTURE)
 - ROBIN HOOD
 - ADD BLANK TO COLLECTOR BASES CREATING ENTRY
 - ADD DRY CREEK WITH LOGS

MONKEY FACE/ NORTH & SOUTH RIM

- ANALYSIS**
- DIRT HOUND BODIES / DIFFICULT TO MAINTAIN
 - TUNNELS ARE SECURITY HAZARD / DIFFICULT TO MAINTAIN
- CONCEPTS**
- REFLECT WITH NEW STRUCTURE
 - CLIMB / BASALT ROCK UPPER PARK THEME
 - MONKEY FACE CLIMBING WALL, NORTH RIM AND SOUTH RIM CLIMBING ROUTES
 - MA TIPLE BOPE (STEEL CABLE) CLIMBING STRUCTURES
 - MOVE PATH TO CREATE MORE ROOM
 - RAMP 4' 6" (SLOPE TO BE ACCESSIBLE)
 - SLUR DOWN HILL
 - TIE LINE DOWN WITH HILL ON OTHER SIDE OF PATH (EQUATE TO ROBIN HOOD LAIR)
 - BALANCE BEAM
 - VOPE, AGILITY AND STRENGTH ELEMENTS
 - ADD SHADE TREES

SOUTH PARK DRIVE



CAPER ACERS RENOVATION 2014

PRELIMINARY MASTER PLAN

"CREATING FUN FOR THE NEXT GENERATION"



#1 BIRTHDAY RING 'A' BIG LAND

- ANALYSIS**
- FENCE ROTTING / UNEVEN / DRAINAGE
- CONCEPTS**
- FIELD STONE WALL TO REPLACE FENCE
 - ENHANCE ROUND DOOR WITH CONCRETE INSIDE ROUND
 - LEVEL DECOMPOSED GRANITE SURFACE
 - LARGE MUSHROOMS, FLOWERS AND GRASS BLADES
 - MOUNDING IN PLANTING AREA
 - NEW ACCESSIBLE ENTRY DOORWAY
 - LONG TABLE

#2 CENTRAL PLAY OPEN SPACE

- ANALYSIS**
- ERODED GRASS & DRAINAGE ISSUES
- CONCEPTS**
- SYNTHETIC TURF PLAY SURFACE
 - SHADE TREES WITH 8' DIA SEAT WALLS

#3 BIRDCAGE

- ANALYSIS**
- BIRDCAGE FOOTING ISSUES
 - SLIDE JOINTS SHIFTED - MAY NEED TO REPLACE FOOTING
 - TUBE TO SLIDE WOBBLES
 - DECK FOOTING ROT
- CONCEPTS**
- REPLACE WOOD WITH STEEL STRUCTURE
 - NEW STEEL CAGE
 - CONCRETE SEAT WALL AROUND WOOD CHIPS / REDUCE FALL SPACE
 - SMALL AMPHITHEATER SEATING PART OF SEAT WALL
 - STAIRCASE TO BIRDCAGE
 - TALK TUBE BETWEEN MONKEY FACE & CASTLE & BIRDCAGE
 - REPLACE FOOTINGS & SLIDES

#4 ENTRANCE

- ANALYSIS**
- ADDRESS EASY CLIMBING PARTS OF BLOCK
 - NEED COHESIVE ENTRANCE
 - ENTRY ARCH - SHARP CORNERS NEED ROUNDED
 - CHAIN POST BARRIER - HAZARD / MAINTENANCE PROBLEM
 - BETTER ENTRY PATHS - D.G. WITH STEEL EDGE
- CONCEPTS**
- FLAG POLES
 - REALIGN ENTRY PATH, ENLARGE AND PROVIDE ACCESS TO ADA PARKING
 - ENHANCE MOAT, COBBLE SWALE, BUNCH GRASSES
 - HISTORIC INTERPRETIVE TIMELINE (5 PANELS)
 - NATIVE RE-VEGETATION - KEEP LOW / LINE OF SITE (2' HIGH MAX)
 - PICNIC TABLES
 - ADD CONCRETE BRIDGE (DECORATIVE WOOD STAMPED)
 - ADD SPLIT RAIL FENCE
 - ADD PRECAST CONCRETE ELEMENTS TO ATTRACT YOUTH
 - BIKE PARKING
 - REPLACE CHAIN LINK WITH DECORATIVE IRON FENCE
 - PROVIDE ENTRY MONUMENT OF CAPER ACRES CHARACTERS

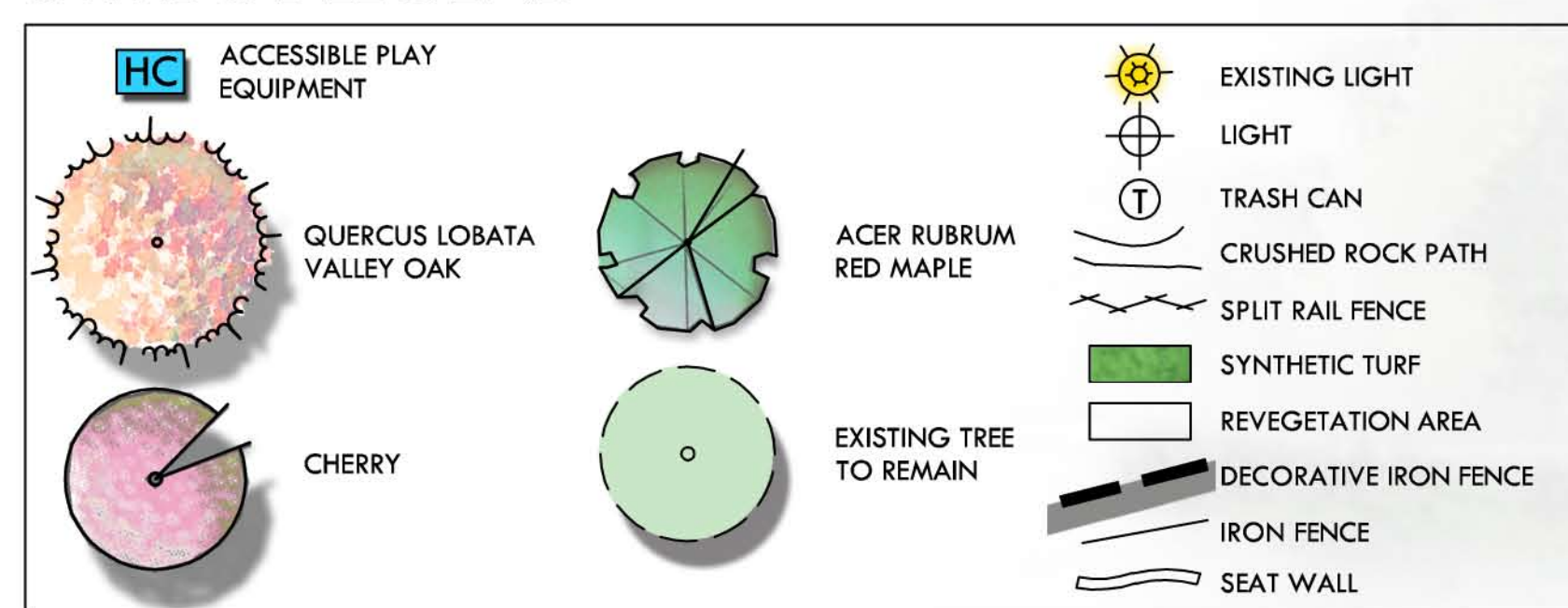
#5 THE ARRIVAL

- ANALYSIS**
- DONOR INFO DOES NOT POP OUT
- CONCEPTS**
- 4 DONOR PANELS ON WALL DESCRIBING HISTORY OF ALL INVOLVED TO DATE
 - INCREASE SIZE OF DONOR CIRCLE / ADD SEAT WALLS
 - DECOMPOSED GRANITE AROUND DONOR WALLS
 - NEW CONCRETE WALL TO DONOR CIRCLE
 - DIRECTIONAL SIGNAGE

#6 PARKING LOT

- ANALYSIS**
- NEED MORE EFFICIENT USE OF EXISTING LAYOUT
 - SHAPE IS AWKWARD
 - ADDRESS BUS ACCESS / DROP OFF
 - ONE WAY NOT EASILY RECOGNIZED
 - SIGN BLENDS TOO WELL, CREATE A MORE PLAYFUL SIGN
 - SUMMER / SPRING - PARKING LOT FULL ALL WEEKEND
- CONCEPTS**
- ADJUST LAYOUT OF FENCE AND PLANTERS TO BETTER DIRECT TRAFFIC
 - SIGNAGE - BUS DROP OFF ONLY, PARK ELSEWHERE
 - SHOW PARKING ALONG ROAD

SYMBOL LEGEND



#7 NICO PROJECT

- ANALYSIS**
- POURED IN PLACE FALL MATERIAL DIFFICULT TO MAINTAIN
 - SUB-GRADE NOT COMPACTED WELL
 - AREA IS A LITTLE LOW
- CONCEPTS**
- PLAN FOR FUTURE REMOVAL & REPLACEMENT OF FALL MATERIAL
 - REPLACE BROKEN TOT EQUIPMENT
 - REPLACE PIRATE SIDE PANEL & SIDE REPAIR

#8 RESTROOM / AMPHITHEATER

- ANALYSIS**
- NOT STRUCTURALLY SOUND
 - HALLWAYS NOT NECESSARY
 - EASIER MAINTAIN
 - NEEDS TO BE HOSEABLE
 - MORE STORAGE
 - NUMBER OF STALLS OK (4)
 - NEEDS GOOD LIGHT, VENTILATION
 - ELIMINATE ACCESS TO ROOF
- CONCEPTS**
- REPLACE WITH CONCRETE OR CMU BLOCK BUILDING
 - CHANGING TABLES (MENS & WOMENS)
 - PROVIDE MAINTENANCE ACCESS GATE AT THIS LOCATION
 - ADD SEATWALL AROUND STAGE
 - ADD SMALL AMPHITHEATER STAGE WITH SITTING LOGS
 - CHALK BOARD WALL
 - KEEP CASTLE THEME
 - INCREASE SIZE FOR STORAGE

#9 SAND PLAY (HUMPTY-DUMPTY)

- ANALYSIS**
- SAND NEEDS CLEANED DAILY
 - NEEDS REPAINTING
 - NEEDS ABILITY TO WET SAND
 - INCLUDE NEW PLAY EQUIPMENT WITHIN SAND AREA
- CONCEPTS**
- FOSSIL FINDS - PRECAST CONCRETE
 - LARGE BOULDER IN MIDDLE (PLAY TABLE)
 - WATER ELEMENT TO WET SAND
 - ADD ADULT AND KID SIZED TABLES
 - ADD NURSERY RHYME ON PLAQUE ON BACK OF WALL
 - ADD HUMPTY DUMPTY STAGES / STORY LINE ?
 - INTERPRETATIVE PANEL (HISTORICAL RHYME)

#10 SWINGS

- ANALYSIS**
- NEED MORE AND NEED TO BE ACCESSIBLE
 - WOOD WALL DIFFICULT TO MAINTAIN
- CONCEPTS**
- TOT MERRY GO ROUND
 - REPLACE WOOD CHIP RETAINING WALL WITH CONCRETE SEAT WALL
 - TIRE SWING
 - TOT SWING
 - MERRY GO ROUND
 - UNIQUE SWING OPTIONS
 - ADA ACCESSIBLE

#11 LOCKSLEY CASTLE

- ANALYSIS**
- (E) DRAINAGE GOOD
 - WOOD DECKS AND CRAWL SPACE PROBLEM IN PAST
 - WALL FOOTINGS EXPOSED
 - EXPOSED FOOTINGS
- CONCEPTS**
- ENHANCE ENTRY - FLAGS, MOAT
 - 6 COLUMNS 24" HIGH
 - TROLL AND MOAT MONSTER
 - SYNTHETIC GRASS FALL MATERIAL OUTSIDE WALLS (BLUE MOAT)
 - SITTING & JUMPING STONES
 - GOBLINS & ANIMALS TWO TO 4 FEET TALL
 - DRAGON SLIDE (PRE-CAST CONCRETE)
 - METAL DECKS (MESH PANELS)
 - DOUBLE SLIDE OUT
 - NEW CONCRETE BRIDGE AT THE ENTRY
 - RAPUNZEL'S TOWER - TWO STORY TUBE SLIDE
 - WOOD CHIP INTERIOR FALL MATERIAL
 - PROVIDE ACCESSIBLE ELEMENTS ON HANDICAP RAMP
 - ADD ACCESSIBLE MUSIC CHIMES AND DRUMS

#12 SWISS CHEESE AND MAZE

- ANALYSIS**
- RETAIN / GREAT FEATURE / EASY TO MAINTAIN
 - RETAIN PICNIC TABLES (POPULAR SHADED SEATING AREA)
- CONCEPTS**
- 3 BLIND MICE COLORED (PRE-CAST CONCRETE)
 - PAYER BLOCK MAZE TO CHEESE
 - ADD TWO PICNIC TABLES

#13 CROOKED HOUSE

- ANALYSIS**
- DRY ROT PRESENT
 - ROOF LEAKS
 - FALL MATERIAL CAN'T TOUCH WOOD
 - NOT ABLE TO SEE INSIDE / SECURITY PROBLEM
- CONCEPTS**
- REPLACE WITH TWO CROOKED HOUSES WITH ROPE BRIDGE
 - OPEN AIR STRUCTURE LIKE BIRDCAGE
 - HANDICAP ACCESSIBLE DOUBLE SLIDE
 - CLIMBING WALL GRIPS ON OUTSIDE OF WALL
 - ADD CROOKED MAN, CAT AND MOUSE FROM NURSERY RHYME (PRE-CAST CONCRETE)
 - NURSERY RHYME INTERPRETIVE PANEL
 - BIRD WATCHING VIEWER AND INTERPRETIVE PANEL
 - CONCRETE SEAT WALLS TO RETAIN WOOD CHIPS
 - TALK TUBES FROM BIRDCAGE AND MONKEY FACE
 - ADD NURSERY RHYME ON PLAQUE ON BUILDING

#14 BIRTHDAY RING 'B' ROBIN HOOD

- ANALYSIS**
- (E) STRUCTURE WORKS WELL
 - NEED TRASH CANS
 - KEEP TABLES MOVEABLE, BUT ADD SEATING
- CONCEPTS**
- ROBIN HOOD THEME WITH FACADE ANOXY
 - LARGE ARROW INTO ENTRY DESIGN
 - ROBINHOOD REWARDS ON TREES
 - BULK TO COLUMN BASES CREATING ENTRY
 - DRY CREEK
 - BALANCE LOGS OVER DRY CREEK
 - THRONE SEAT W / MAID MARIAN
 - ADD INTERPRETATIVE PANEL DESCRIBING HISTORY OF ROBINHOOD IN BIDWELL PARK
 - ADD BENCHES TO WOOD FENCE

#15 MONKEY FACE

- ANALYSIS**
- DIRT MOUND ERODES / DIFFICULT TO MAINTAIN
 - TUNNELS ARE SECURITY HAZARD / DIFFICULT TO MAINTAIN
- CONCEPTS**
- REPLACE WITH NEW MONKEY FACE CLIMBING STRUCTURE
 - GUNITE / BASALT ROCK UPPER PARK THEME
 - ADD SHADE TREES
 - TALK TUBE BETWEEN CROOKED HOUSE & BIRDCAGE
 - MOVE PATH TO CREATE MORE ROOM
 - RAISE +4' (SLOPE TO BE ACCESSIBLE)
 - MONKEY FACE CLIMBING WALL, NORTH RIM & SOUTH RIM
 - MULTIPLE ROPE (STEEL CABLE) CLIMBING NETS (SPIDERWEB)
 - SLIDE DOWN HILL
 - BALANCE BEAM
 - INTERACTIVE SPIDER PLAY STRUCTURE
 - ROPE, AGILITY AND STRENGTH ELEMENTS

#17 REVEGETATION AREAS

- ANALYSIS**
- LARGE TURF SPACES DIFFICULT TO MAINTAIN
- CONCEPTS**
- REMOVE ANY EXISTING TURF OR VEGETATION
 - PLANT NATIVE GRASSES & SHRUBS
 - WALK ON BARK MULCH

#16 ROBIN HOODS LAIR

- ANALYSIS**
- UNDER UTILIZED AREA
 - DIFFICULT TO MAINTAIN
- CONCEPTS**
- TWO ZIP LINE TO RACE INTO ROBIN HOODS LAIR
 - SITTING LOGS AT END OF ZIP LINE RUN
 - STATUES OF ROBIN HOODS CARICATURES
 - SURROUNDED WITH NO MOW GRASSES
 - REMOVE EXISTING FENCE AND RE-ALIGN NEW IRON FENCE

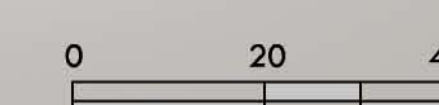
SOUTH PARK DRIVE



CAPER ACERS RENOVATION 2014

FINAL MASTER PLAN

"CREATING FUN FOR THE NEXT GENERATION"



CAPER ACRES

Renovation
Preliminary Estimated Cost of Construction

Project Number: 2076
Date: August 11, 2014



ITEM	QUANTITY	PRICE	TOTAL
General Site Improvements			
Perimeter Fence Demo	1 LS	\$5,000.00	\$5,000.00
Remove Tunnels	1 LS	\$7,500.00	\$7,500.00
Site Drainage	1 LS	\$5,000.00	\$5,000.00
Mounding / Fill Soil (Grass Area & Monkey face)	986 CY	\$35.00	\$34,510.00
Trees (15 Gal)	46 EA	\$150.00	\$6,900.00
Synthetic Turf Site Prep	13,200 SF	\$3.45	\$45,540.00
Synthetic Turf Play Surface (Installed)	13,200 SF	\$9.97	\$131,604.00
Mow Curb (8" Wide)	540 LF	\$10.00	\$5,400.00
Native Revegetation Grasses	137 EA	\$25.00	\$3,425.00
Native Revegetation Bark Mulch (4")	50,575 SF	\$0.50	\$25,287.50
Decomposed Granite Path Inside Fence Line	5,315 SF	\$2.00	\$10,630.00
Decorative Iron Fence (8' High, No Climb)	520 LF	\$75.00	\$39,000.00
Standard Iron Fence (8' High, No Climb)	725 LF	\$50.00	\$36,250.00
Talk Tubes- Connecting Crooked House to Birdcage to Interpretative Panels (Along Path)	12 EA	\$2,000.00	\$24,000.00
Butterfly Art Located Along Outer path	2 EA	\$4,500.00	\$9,000.00
Site Irrigation and Sleeves	1 LS	\$10,000.00	\$10,000.00
Picnic Tables	5 EA	\$1,500.00	\$7,500.00
Sump & Leach trenches	1 LS	\$5,000.00	\$5,000.00
Sub Total			\$418,046.50
The Contingency Includes Unforeseen Work That is Not Depicted on the Plan Such as Demolition, Grading & Drainage.		30% Contingency	\$125,413.95
		15% Soft Costs	\$62,706.98
Total			\$606,167.43
#1 Birthday Ring 'A' - Big Land			
Field Stone Wall to Replace Section of Fence	44 LF	\$70.00	\$3,080.00
Demo Section of Fence	44 LF	\$15.00	\$660.00
Enhance Round Door	1 LS	\$1,500.00	\$1,500.00
Enhance Existing Stone Window	1 LS	\$1,500.00	\$1,500.00
Large Mushrooms, Flowers and Grass Blades	1 LS	\$30,000.00	\$30,000.00
Wood Formed Stamped Concrete	141 SF	\$9.50	\$1,339.50
Entry Monument	1 LS	\$10,000.00	\$10,000.00
Long table	1 LS	\$2,000.00	\$2,000.00
Sub Total			\$50,079.50
The Contingency Includes Unforeseen Work That is Not Depicted on the Plan Such as Demolition, Grading & Drainage.		30% Contingency	\$15,023.85
		15% Soft Costs	\$7,511.93
Total			\$72,615.28
#2 Central Play Open Space			
Seat Walls Around Trees	5 EA	\$1,375.00	\$6,875.00
Accessible Music Chimes	3 EA	\$2,500.00	\$7,500.00
Sub Total			\$14,375.00
The Contingency Includes Unforeseen Work That is Not Depicted on the Plan Such as Demolition Grading & Drainage.		30% Contingency	\$4,312.50
		15% Soft Costs	\$2,156.25
Total			\$20,843.75
#3 Birdcage			
Replace Wood with Steel Structure	1 LS	\$5,000.00	\$5,000.00
Demo Existing Wood Structure	1 LS	\$3,000.00	\$3,000.00
New Steel Cage	1 LS	\$10,000.00	\$10,000.00
Concrete Seat Wall	110 LF	\$55.00	\$6,050.00
Small Amphitheater Seating Part of Seat Wall	25 LF	\$40.00	\$1,000.00
Staircase	2 LS	\$10,000.00	\$20,000.00
Sub Total			\$45,050.00
The Contingency Includes Unforeseen Work That is Not Depicted on the Plan Such as Demolition, Grading & Drainage.		30% Contingency	\$13,515.00
		15% Soft Costs	\$6,757.50
Total			\$65,322.50

#4 Main Entrance			
Demo Existing Pavers	2,133 SF	\$7.00	\$14,931.00
Flag poles	4 EA	\$450.00	\$1,800.00
Realign Entry Path	2,133 SF	\$7.00	\$14,931.00
Dry Creek - 3" to 8" River Washed Cobble Over Fabric	300 SF	\$5.00	\$1,500.00
Bunch Grasses	26 EA	\$25.00	\$650.00
Historic Interpretive Timeline Kiosk	5 EA	\$2,000.00	\$10,000.00
Picnic Tables	2 EA	\$1,500.00	\$3,000.00
Concrete Bridge	165 SF	\$25.00	\$4,125.00
Concrete Bridge Demo	165 SF	\$10.00	\$1,650.00
Split Rail Fence	445 LF	\$20.00	\$8,900.00
Sunflower Objects	3 EA	\$1,250.00	\$3,750.00
Bike Parking	1 EA	\$3,500.00	\$3,500.00
Entry Monument	1 LS	\$4,500.00	\$4,500.00
Sub Total			\$58,306.00
The Contingency Includes Unforeseen Work That is Not Depicted on the Plan Such as Demolition, Grading & Drainage.		30% Contingency	\$17,491.80
		15% Soft Costs	\$8,745.90
Total			\$84,543.70
#5 The Arrival			
4 panels on Wall Describing History of All Involved	6 EA	\$3,000.00	\$18,000.00
Increase Size of Donor Circle	1 LS	\$5,000.00	\$5,000.00
Decomposed Granite Around Donor Walls	460 SF	\$2.00	\$920.00
New Concrete Walkway up to and Around Donor Circle	1,200 EA	\$7.00	\$8,400.00
Directional Signage	1 EA	\$10,000.00	\$10,000.00
Seat Walls	240 LF	\$55.00	\$13,200.00
Sub Total			\$55,520.00
The Contingency Includes Unforeseen Work That is Not Depicted on the Plan Such as Demolition, Grading & Drainage.		30% Contingency	\$16,656.00
		15% Soft Costs	\$8,328.00
Total			\$80,504.00
#6 Parking Lot			
Adjust Fence and Planters	1 LS	\$5,000.00	\$5,000.00
Replace Gravel (9 Transfer Loads of Base Rock)	286 CY	\$30.00	\$8,580.00
Entry Monument Inviting Children to Play (Statue)	1 EA	\$4,500.00	\$4,500.00
New Entry Sign (Demo Old)	1 LS	\$5,000.00	\$5,000.00
Fence Repair	1 LS	\$1,000.00	\$1,000.00
Irrigation	1 LS	\$3,000.00	\$3,000.00
Logs in Parking lot	1 LS	\$10,000.00	\$10,000.00
Cobble's for Parking Lane Striping	1 LS	\$4,000.00	\$4,000.00
Trees & Grasses	1 LS	\$3,000.00	\$3,000.00
Sub Total			\$44,080.00
The Contingency Includes Unforeseen Work That is Not Depicted on the Plan Such as Demolition, Grading & Drainage.		30% Contingency	\$13,224.00
		15% Soft Costs	\$6,612.00
Total			\$63,916.00

PRELIMINARY ESTIMATES FOR IMPROVEMENTS INCLUDE A LARGE CONTINGENCY TO COVER MISCELLANEOUS ITEMS SUCH AS DEMOLITION, GRADING, COMPACTION... FOR ALL PROJECTS.



COST ESTIMATE

CAPER ACRES RENOVATION MASTER PLAN

#7 Nico Project				
Remove & Replace Fall Material With Colored Grass	5,000	SF	\$25.00	\$125,000.00
Replace Tot Rockers	2	EA	\$2,500.00	\$5,000.00
Replace Stairs to Pirate Boat	1	EA	\$1,500.00	\$1,500.00
			Sub Total	\$131,500.00
The Contingency Includes Unforeseen Work That is Not Depicted on the Plan Such as Demolition, Grading & Drainage.			30% Contingency	\$39,450.00
			15% Soft Costs	\$19,725.00
			Total	\$190,675.00
#8 Restrooms / Amphitheater				
Concrete or CMU Block Building	1	LS	\$175,000.00	\$175,000.00
Changing Tables	2	EA	\$250.00	\$500.00
Maintenance Access Gate	1	LS	\$1,000.00	\$1,000.00
Seat Wall	25	LF	\$55.00	\$1,375.00
Small Amphitheater Stage	245	SF	\$25.00	\$6,125.00
Sitting Logs	6	EA	\$500.00	\$3,000.00
Drinking Fountain	1	EA	\$2,500.00	\$2,500.00
Chalkboard Wall	1	LS	\$4,500.00	\$4,500.00
			Sub Total	\$194,000.00
The Contingency Includes Unforeseen Work That is Not Depicted on the Plan Such as Demolition, Grading & Drainage.			30% Contingency	\$58,200.00
			15% Soft Costs	\$29,100.00
			Total	\$281,300.00
#9 Sand Play (Humpty Dumpty)				
Fossil Finds - Precast Concrete	2	EA	\$1,000.00	\$2,000.00
Large Boulder in Middle (Play Table)	1	EA	\$650.00	\$650.00
Water Element	1	LS	\$4,500.00	\$4,500.00
Adult Sized Tables	1	EA	\$1,500.00	\$1,500.00
Kid Sized Tables (Concrete)	2	EA	\$500.00	\$1,000.00
Nursery Rhyme Plaque	1	EA	\$2,000.00	\$2,000.00
			Sub Total	\$11,650.00
The Contingency Includes Unforeseen Work That is Not Depicted on the Plan Such as Demolition, Grading & Drainage.			30% Contingency	\$3,495.00
			15% Soft Costs	\$1,747.50
			Total	\$16,892.50
#10 Swings				
Tot Merry Go Round	1	EA	\$2,500.00	\$2,500.00
Concrete Seat Wall	275	LF	\$55.00	\$15,125.00
Tire Swing	1	EA	\$3,200.00	\$3,200.00
Tot Swing	1	EA	\$2,500.00	\$2,500.00
Merry Go Round	1	EA	\$13,000.00	\$13,000.00
Teeter Totter	1	EA	\$3,900.00	\$3,900.00
Fall Material	4,500	SF	\$75.00	\$337,500.00
Tot Rockers / Balance Boards	4	EA	\$1,500.00	\$6,000.00
			Sub Total	\$383,725.00
The Contingency Includes Unforeseen Work That is Not Depicted on the Plan Such as Demolition, Grading & Drainage.			30% Contingency	\$115,117.50
			15% Soft Costs	\$57,558.75
			Total	\$556,401.25

Locksley Castle				
Entry Flags (Steel Powder coated Flags, Steel poles)	6	EA	\$450.00	\$2,700.00
6 Columns 24" High	6	EA	\$1,000.00	\$6,000.00
Troll and Moat Monster (pre-cast concrete)	4	EA	\$9,500.00	\$38,000.00
Synthetic Turf	2,500	SF	\$13.42	\$33,550.00
Sitting / Jumping Stones	4	EA	\$500.00	\$2,000.00
Dragon Slide	1	LS	\$70,000.00	\$70,000.00
Decks to be Metal Mesh Panels	305	SF	\$30.00	\$9,150.00
New Concrete Bridge	100	SF	\$9.50	\$950.00
Tower Two Story Tube Slide	3	EA	\$8,000.00	\$24,000.00
Accessible Music Chimes	1	EA	\$500.00	\$500.00
Double Slide Out	2	EA	\$5,000.00	\$10,000.00
			Sub Total	\$196,850.00
The Contingency Includes Unforeseen Work That is Not Depicted on the Plan Such as Demolition, Grading & Drainage.			30% Contingency	\$59,055.00
			15% Soft Costs	\$29,527.50
			Total	\$285,432.50
Swiss Cheese Area				
Colored 3 Blind Mice (Pre-cast Concrete)	3	EA	\$4,000.00	\$12,000.00
Colored Stamped Concrete	300	SF	\$15.00	\$4,500.00
Synthetic Turf	2,450	SF	\$20.00	\$49,000.00
			Sub Total	\$65,500.00
The Contingency Includes Unforeseen Work That is Not Depicted on the Plan Such as Demolition, Grading & Drainage.			30% Contingency	\$19,650.00
			15% Soft Costs	\$9,825.00
			Total	\$94,975.00
Crooked House				
Two Crooked Houses with Rope Lined Cable Bridge	1	LS	\$100,000.00	\$100,000.00
Double Slide	2	EA	\$2,500.00	\$5,000.00
Climbing Wall Grips on Outside of House	1	LS	\$1,500.00	\$1,500.00
Crooked Man, Cat and Mouse (Pre-cast Concrete)	3	EA	\$4,000.00	\$12,000.00
Nursery Rhyme Interpretive Panel	1	EA	\$2,500.00	\$2,500.00
Bird Watching Viewer Interpretive Panel	1	EA	\$2,500.00	\$2,500.00
Seat Wall	155	LF	\$45.00	\$6,975.00
			Sub Total	\$130,475.00
The Contingency Includes Unforeseen Work That is Not Depicted on the Plan Such as Demolition, Grading & Drainage.			30% Contingency	\$39,142.50
			15% Soft Costs	\$19,571.25
			Total	\$189,188.75

Birthday Ring 'B'				
Robin Hood Themed Facade Canopy	1	LS	\$5,000.00	\$5,000.00
Large Arrow Into Entry Design	1	EA	\$3,000.00	\$3,000.00
Robin Hood Rewards on Trees	5	EA	\$500.00	\$2,500.00
Bulk to Column Bases	2	EA	\$1,200.00	\$2,400.00
Dry Creek - 3" to 8" Washed Cobble Over Fabric	650	SF	\$5.00	\$3,250.00
Balance Logs Over Dry Creek	1	LS	\$2,500.00	\$2,500.00
Benches	2	EA	\$1,500.00	\$3,000.00
Throne Seat w/ Maid Marian	1	LS	\$7,800.00	\$7,800.00
Interpretive Panel	1	LS	\$4,000.00	\$4,000.00
			Sub Total	\$33,450.00
The Contingency Includes Unforeseen Work That is Not Depicted on the Plan Such as Demolition, Grading & Drainage.			30% Contingency	\$10,035.00
			15% Soft Costs	\$5,017.50
			Total	\$48,502.50
Monkey Face Climbing Structure				
Monkey Face Climbing Wall and Rock	1	LS	\$150,000.00	\$150,000.00
Multiple Rope (Steel Cable) Climbing Structures	1	LS	\$35,000.00	\$35,000.00
Concrete Slide	2	EA	\$6,000.00	\$12,000.00
Balance beam (Ground Log)	1	EA	\$2,295.00	\$2,295.00
Interactive Spider Play Structure	1	EA	\$66,000.00	\$66,000.00
Dg Access	1	LS	\$4,000.00	\$4,000.00
Fall Material (12" Wood Chips)	130	CY	\$75.00	\$9,750.00
			Sub Total	\$279,045.00
The Contingency Includes Unforeseen Work That is Not Depicted on the Plan Such as Demolition, Grading & Drainage.			30% Contingency	\$83,713.50
			15% Soft Costs	\$41,856.75
			Total	\$404,615.25
Robin Hoods Lair				
Two Zip Lines - Race Into Robin Hood's Lair	2	EA	\$12,500.00	\$25,000.00
Sitting Logs at end of zip line run	5	EA	\$500.00	\$2,500.00
Fall Material (12" Wood Chips)	68	CY	\$75.00	\$5,100.00
Zipline Platform	1	LS	\$10,000.00	\$10,000.00
Statues of Robin Hood Characters	5	EA	\$7,800.00	\$39,000.00
			Sub Total	\$81,600.00
The Contingency Includes Unforeseen Work That is Not Depicted on the Plan Such as Demolition, Grading & Drainage.			30% Contingency	\$24,480.00
			15% Soft Costs	\$12,240.00
			Total	\$118,320.00
Revegetation				
Remove any Existing Turf or Vegetation	1	LS	\$5,000.00	\$5,000.00
Plant Native Grasses & Shrubs	481	EA	\$25.00	\$12,025.00
Walk on Bark Mulch 2" Deep (Delivered)	200	CY	\$45.00	\$9,000.00
			Sub Total	\$26,025.00
The Contingency Includes Unforeseen Work That is Not Depicted on the Plan Such as Demolition, Grading & Drainage.			30% Contingency	\$7,807.50
			15% Soft Costs	\$3,903.75
			Total	\$37,736.25

TOTAL \$3,099,631.65

NOTE: THIS ESTIMATE IS BASED ON THE CAPER ACRES MASTER PLAN, DATED AUGUST 19, 2014. IT IS RECOGNIZED THAT NEITHER THE LANDSCAPE ARCHITECT NOR THE CLIENT HAS CONTROL OVER THE COST OF LABOR, MATERIALS OR EQUIPMENT, OVER A CONTRACTOR'S METHODS OF DETERMINING BIDS OR COMPETITIVE BIDDING, MARKET OR NEGOTIATING CONDITIONS. ACCORDINGLY, THE LANDSCAPE ARCHITECT CANNOT WARRANT OR REPRESENT THAT BIDS OR NEGOTIATED PRICES WILL VARY FROM ANY STATEMENT ESTIMATED COST OF CONSTRUCTION.

COST ESTIMATE

CAPER ACRES RENOVATION MASTER PLAN





DECOMPOSED GRANITE PATH



DECORATIVE IRON FENCE

PROPOSED IMPROVEMENTS

General Site Improvements	QTY		COST	TOTAL
Perimeter Fence Demo	1	LS	\$2,000.00	\$5,000.00
Remove Tunnels	1	LS	\$3,000.00	\$7,500.00
Site Drainage	1	LS	\$5,000.00	\$5,000.00
Mounding / Fill Soil (Grass Area & Monkey face)	986	CY	\$35.00	\$34,510.00
Trees (15 Gal)	46	EA	\$150.00	\$6,900.00
Synthetic Turf Site Prep	13,200	SF	\$3.45	\$45,540.00
Synthetic Turf Play Surface (Installed)	13,200	SF	\$9.97	\$131,604.00
Mow Curb (8" Wide)	540	LF	\$10.00	\$5,400.00
Native Revegetation Grasses	137	EA	\$25.00	\$3,425.00
Native Revegetation Bark Mulch (4")	50,575	SF	\$0.50	\$25,287.50
Decomposed Granite Path Inside Fence Line	5,315	SF	\$2.00	\$10,630.00
Decorative Iron Fence (8' High, No Climb)	520	LF	\$75.00	\$39,000.00
Standard Iron Fence (8' High, No Climb)	725	LF	\$50.00	\$36,250.00
Talk Tubes- Connecting Crooked House to Birdcage to	1	LS	\$6,500.00	\$6,500.00
Interpretative Panels (Along Path)	12	EA	\$2,000.00	\$24,000.00
Butterfly Art Located Along Outer path	2	EA	\$4,500.00	\$9,000.00
Site Irrigation and Sleeves	1	LS	\$10,000.00	\$10,000.00
Picnic Tables	5	EA	\$1,500.00	\$7,500.00
Sump & Leach trenches	1	LS	\$5,000.00	\$5,000.00
			Sub Total	\$418,046.50
The Contingency Includes Unforeseen Work That is Not Depicted on the Plan Such as Demolition, Grading & Drainage.			30% Contingency	\$125,413.95
			15% Soft Costs	\$62,706.98
			Total	\$606,167.43



IRON FENCE

GENERAL SITE IMPROVEMENTS

CONCEPTUAL DESIGNS AND IMPROVEMENTS

"CREATING FUN FOR THE NEXT GENERATION"

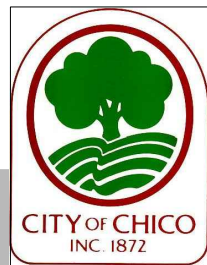
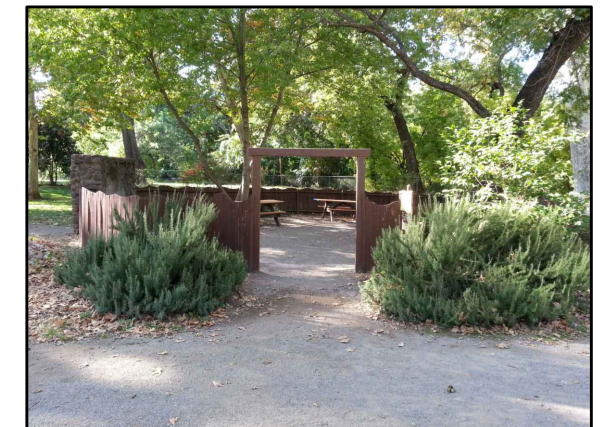


309 WALL STREET
CHICO, CA 95928
530.899.1616

2014-07-14 #2076

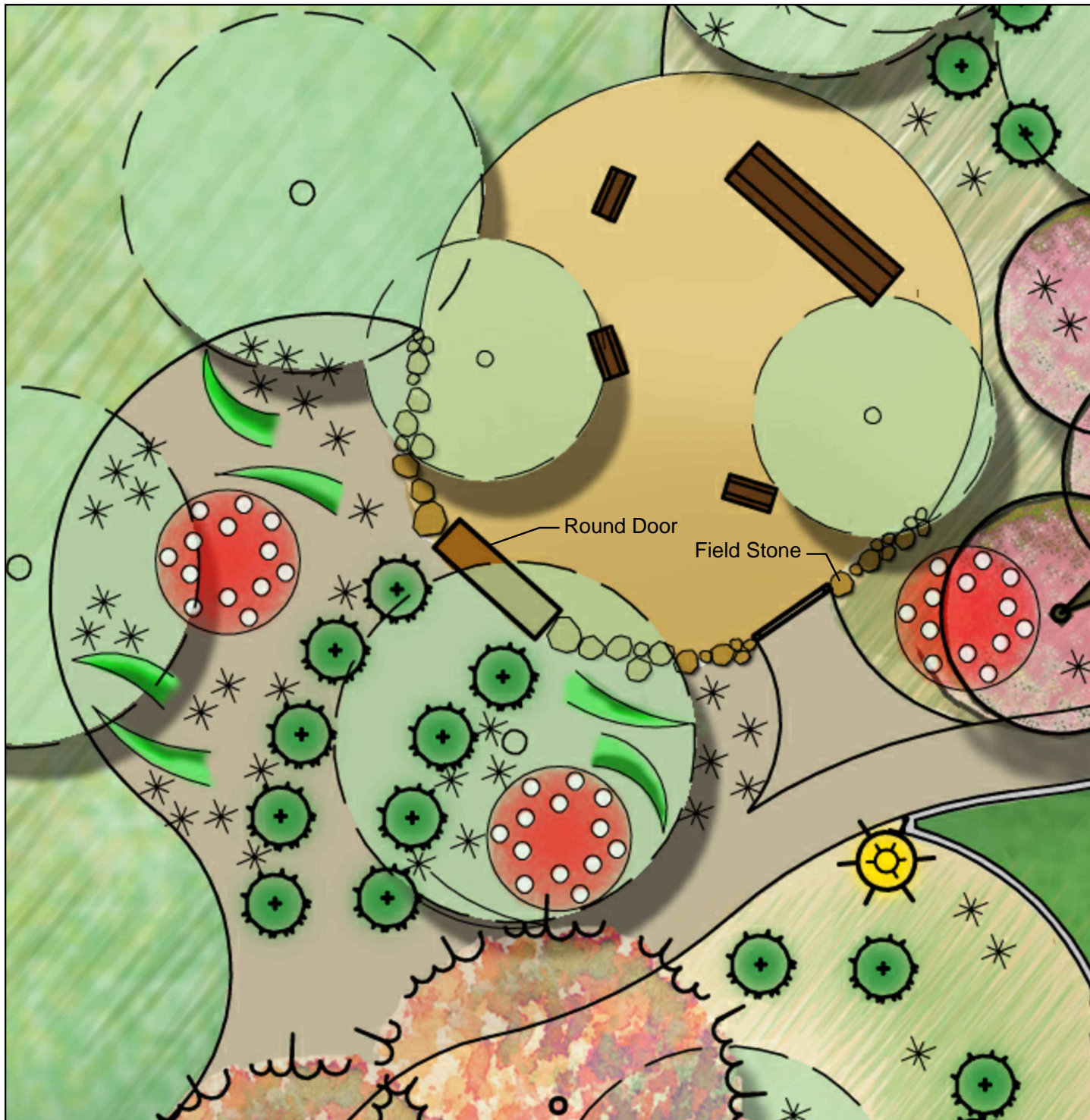
Analysis

- EXISTING FENCE DETERIORATING
- RUIN TYPE WALL TO REPLACE FENCE
- ENHANCE ROUND DOOR
- KEEP IN MIND EXISTING DRAINAGE
- CREATE FUN THEME



#1 BIRTHDAY RING 'A' BIG LAND

EXISTING CONDITIONS



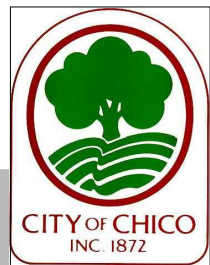
PROPOSED IMPROVEMENTS

#1	Birthday Ring 'A' - Big Land	QTY		COST	TOTAL
	Field Stone Wall to Replace Section of Fence	44	LF	\$70.00	\$3,080.00
	Demo Section of Fence	44	LF	\$15.00	\$660.00
	Enhance Round Door	1	LS	\$1,500.00	\$1,500.00
	Enhance Existing Stone Window	1	LS	\$1,500.00	\$1,500.00
	Large Mushrooms, Flowers and Grass Blades	1	LS	\$30,000.00	\$30,000.00
	Wood Formed Stamped Concrete	141	SF	\$9.50	\$1,339.50
	Entry Monument	1	LS	\$10,000.00	\$10,000.00
	Long table	1	LS	\$2,000.00	\$2,000.00
				Sub Total	\$50,079.50
	The Contingency Includes Unforeseen Work That is Not Depicted on the Plan Such as Demolition, Grading & Drainage.			30% Contingency	\$15,023.85
				15% Soft Costs	\$7,511.93
				Total	\$72,615.28



Analysis

- ERODED GRASS
- HIGH TRAFFIC AREA
- DRAINAGE PROBLEMS



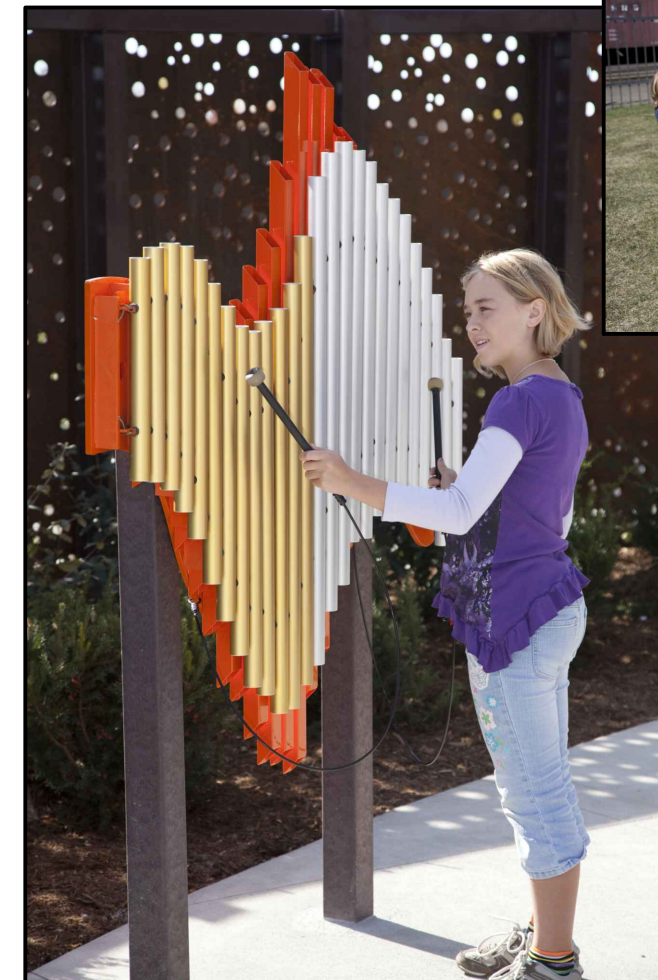
#2 CENTRAL PLAY / OPEN SPACE EXISTING CONDITIONS



PROPOSED IMPROVEMENTS

#2	Central Play Open Space	QTY		COST	TOTAL
	Seat Walls Around Trees	5	EA	\$1,375.00	\$6,875.00
	Accessible Music Chimes	3	EA	\$2,500.00	\$7,500.00
				Sub Total	\$14,375.00
	The Contingency Includes Unforeseen Work That is Not Depicted on the Plan Such as Demolition Grading & Drainage.			30% Contingency	\$4,312.50
				15% Soft Costs	\$2,156.25
				Total	\$20,843.75

- Seat Walls
- Music Chimes
- Seat Walls
- Music Chimes
- Seat Walls
- Music Chimes



MUSIC CHIMES



"CREATING FUN FOR THE NEXT GENERATION"

#2 CENTRAL PLAY OPEN SPACE
CONCEPTUAL DESIGNS AND IMPROVEMENTS

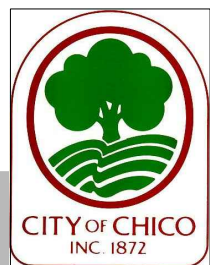
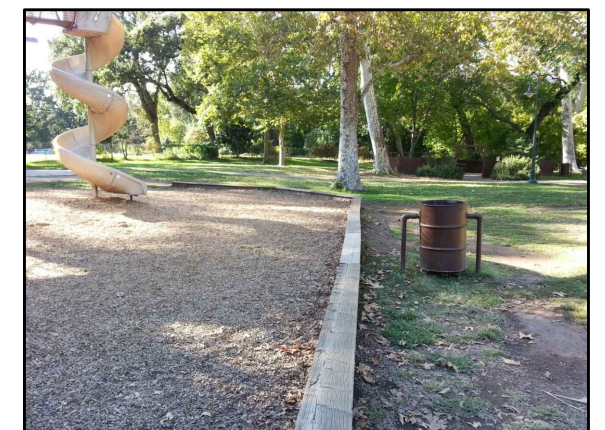
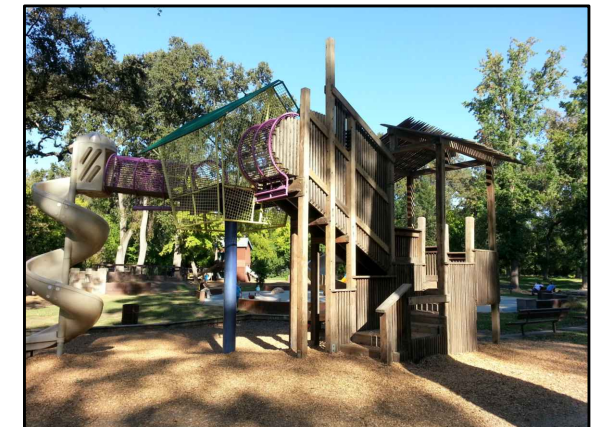


309 WALL STREET
CHICO, CA 95928
530.899.1616



Analysis

- BIRDCAGE FOOTING SHIFT WITH WATER TABLE
- SLIDE JOINTS SHIFT - MAY NEED TO REPLACE
- TUBE TO SLIDE WOBBLES
- FOOTING FIX IS FIRST PRIORITY
- WOOD CHIPS AT WOOD POST CAUSES ROT
- REPLACE EXISTING WOOD WITH STEEL



#3 THE BIRDCAGE EXISTING CONDITIONS



PROPOSED IMPROVEMENTS

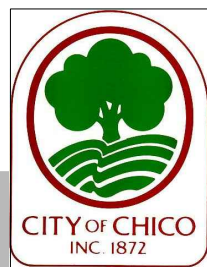
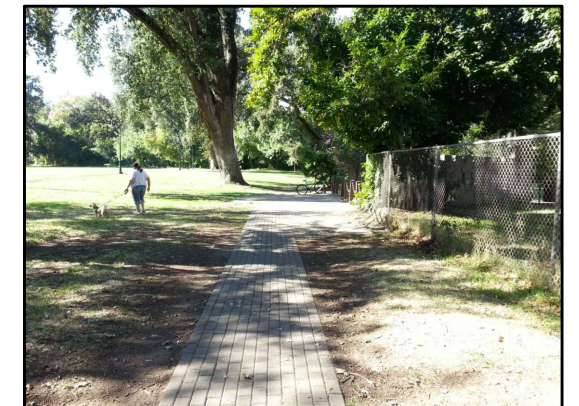
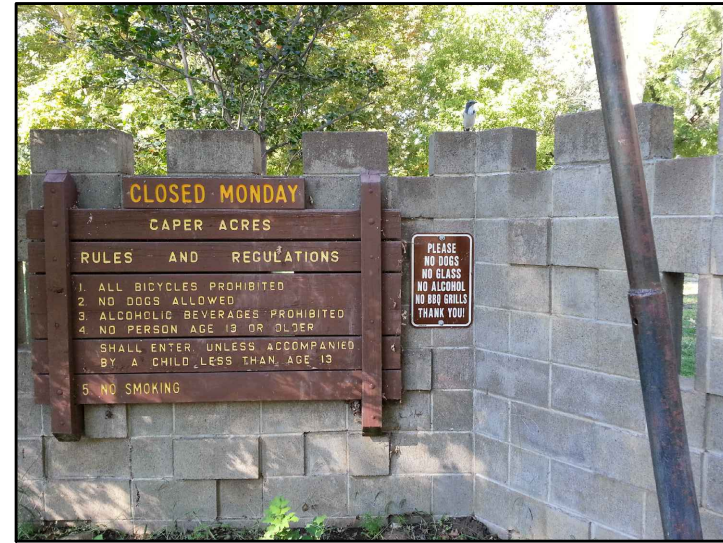
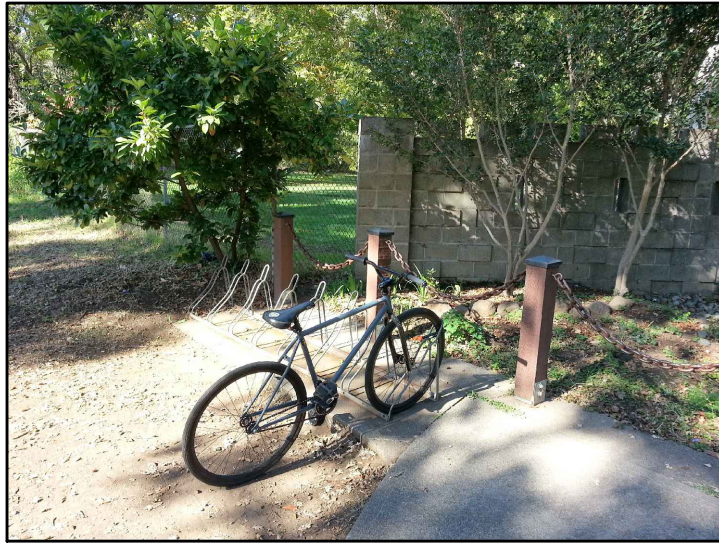
#3	Birdcage	QTY		COST	TOTAL
	Replace Wood with Steel Structure	1	LS	\$5,000.00	\$5,000.00
	Demo Existing Wood Structure	1	LS	\$3,000.00	\$3,000.00
	New Steel Cage	1	LS	\$10,000.00	\$10,000.00
	Concrete Seat Wall	110	LF	\$55.00	\$6,050.00
	Small Amphitheater Seating Part of Seat Wall	25	LF	\$40.00	\$1,000.00
	Staircase	2	LS	\$10,000.00	\$20,000.00
Sub Total					\$45,050.00
The Contingency Includes Unforeseen Work That is Not Depicted on the Plan Such as Demolition Grading & Drainage.				30% Contingency	\$13,515.00
				15% Soft Costs	\$6,757.50
Total					\$65,322.50

Small Amphitheater Seating

New Steel Cage

Analysis

- ADDRESS EASY CLIMBING PARTS OF BLOCK
- NEED COHESIVE ENTRANCE
- ENTRY ARCH - SHARP CORNERS NEED ROUNDED
- CHAIN POST BARRIER - HAZARD / MAINT. PROBLEM
- BETTER ENTRY PATHS - D.G. WITH STEEL EDGE
- REPLACE BIKE RACKS



#4 MAIN ENTRANCE EXISTING CONDITIONS



PROPOSED IMPROVEMENTS

#4	Main Entrance	QTY		COST	TOTAL
	Demo Existing Pavers	2,133	SF	\$7.00	\$14,931.00
	Flag poles	4	EA	\$450.00	\$1,800.00
	Realign Entry Path	2,133	SF	\$7.00	\$14,931.00
	Dry Creek - 3" to 8" River Washed Cobble Over Fabric	300	SF	\$5.00	\$1,500.00
	Bunch Grasses	26	EA	\$25.00	\$650.00
	Historic Interpretive Timeline Kiosk	5	EA	\$2,000.00	\$10,000.00
	Picnic Tables	2	EA	\$1,500.00	\$3,000.00
	Concrete Bridge	165	SF	\$25.00	\$4,125.00
	Concrete Bridge Demo	165	SF	\$10.00	\$1,650.00
	Split Rail Fence	445	LF	\$20.00	\$8,900.00
	Sunflower Objects	3	EA	\$1,250.00	\$3,750.00
	Bike Parking	1	EA	\$3,500.00	\$3,500.00
	Entry Monument	1	LS	\$4,500.00	\$4,500.00
Sub Total					\$58,306.00
The Contingency Includes Unforeseen Work That is Not Depicted on the Plan Such as Demolition Grading & Drainage.				30% Contingency	\$17,491.80
				15% Soft Costs	\$8,745.90
Total					\$84,543.70



DRY CREEK / NATIVE GRASSES



HISTORIC INTPRETIVE TIMELINE KIOSK



SPLIT RAIL FENCE

#4 MAIN ENTRANCE

"CREATING FUN FOR THE NEXT GENERATION"

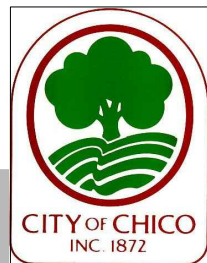
CONCEPTUAL DESIGNS AND IMPROVEMENTS



309 WALL STREET
CHICO, CA 95928
530.899.1616

Analysis

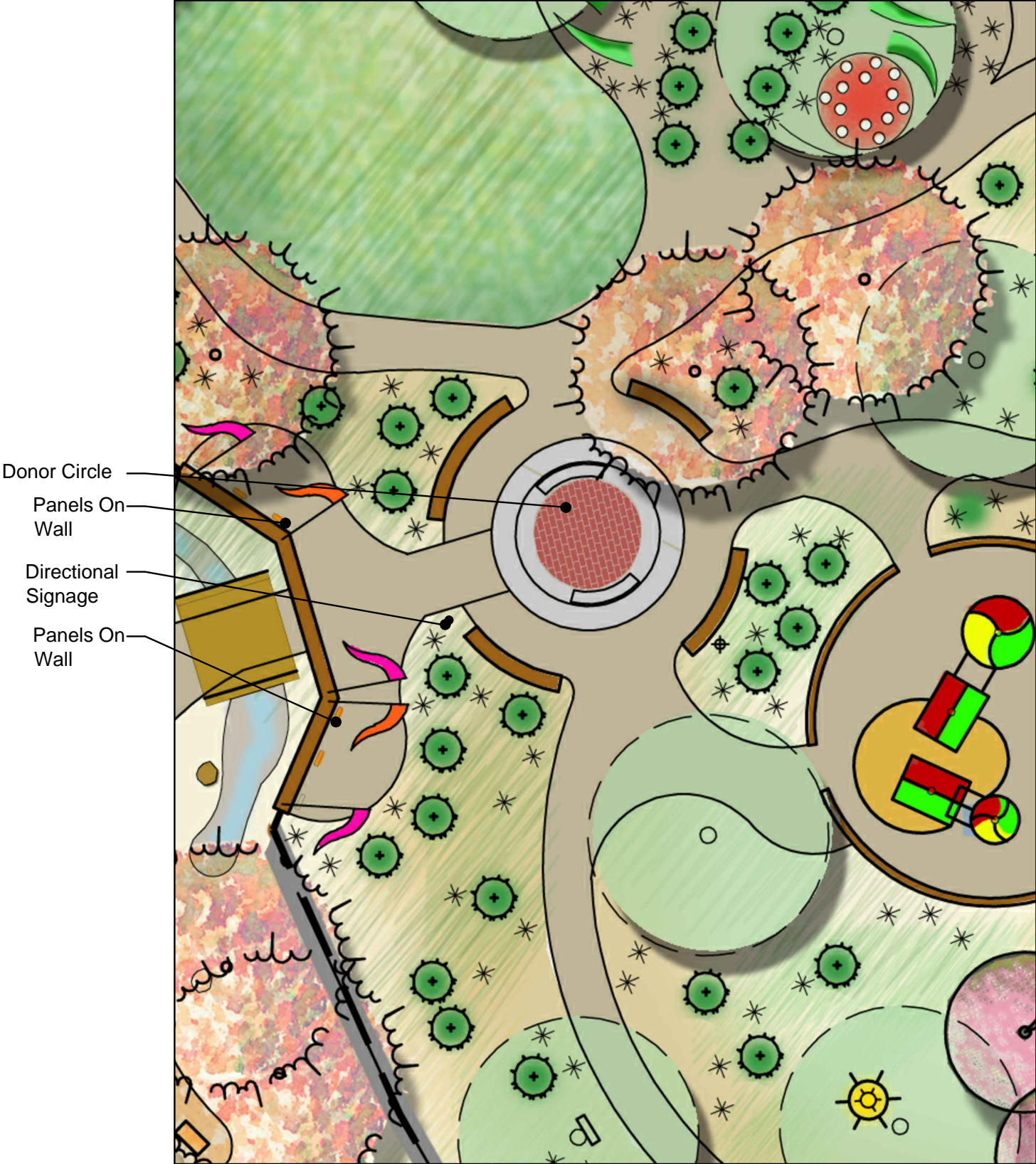
- DONOR INFO DOES NOT POP OUT



#5 THE ARRIVAL EXISTING CONDITIONS

PROPOSED IMPROVEMENTS

#5	The Arrival	QTY		COST	TOTAL
	4 panels on Wall Describing History of All Involved	6	EA	\$3,000.00	\$18,000.00
	Increase Size of Donor Circle	1	LS	\$5,000.00	\$5,000.00
	Decomposed Granite Around Donor Walls	460	SF	\$2.00	\$920.00
	New Concrete Walkway up to and Around Donor Circle	1,200	EA	\$7.00	\$8,400.00
	Directional Signage	1	EA	\$10,000.00	\$10,000.00
	Seat Walls	240	LF	\$55.00	\$13,200.00
Sub Total					\$55,520.00
The Contingency Includes Unforeseen Work That is Not Depicted on the Plan Such as Demolition Grading & Drainage.				30% Contingency	\$16,656.00
				15% Soft Costs	\$8,328.00
Total					\$80,504.00



DIRECTIONAL SINGAGE



SEAT WALLS

#5 THE ARRIVAL

CONCEPTUAL DESIGNS AND IMPROVEMENTS



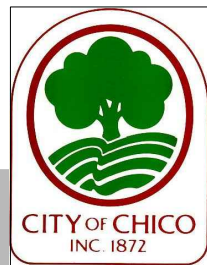
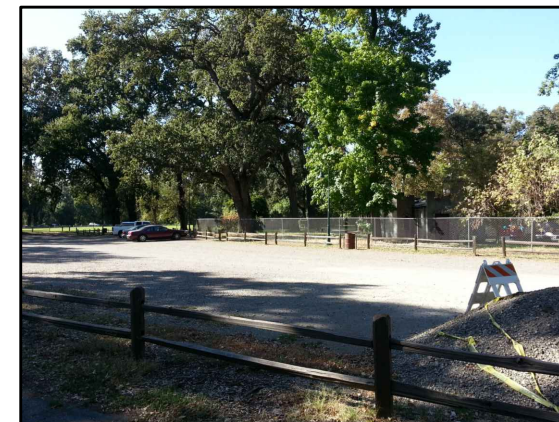
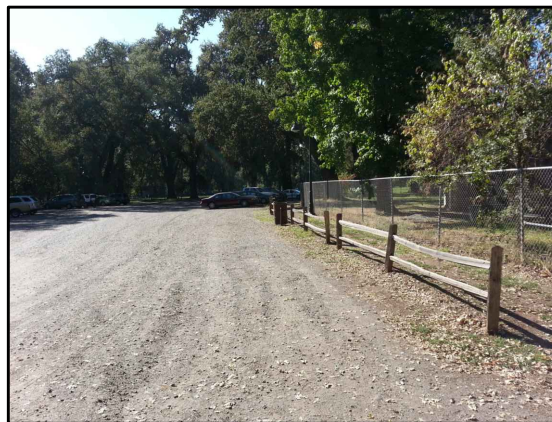
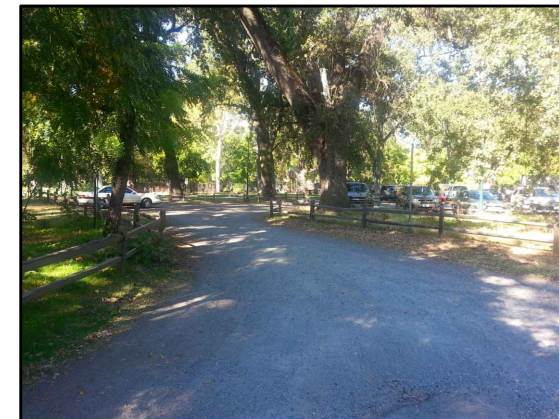
309 WALL STREET
CHICO, CA 95928
530.899.1616

"CREATING FUN FOR THE NEXT GENERATION"



Analysis

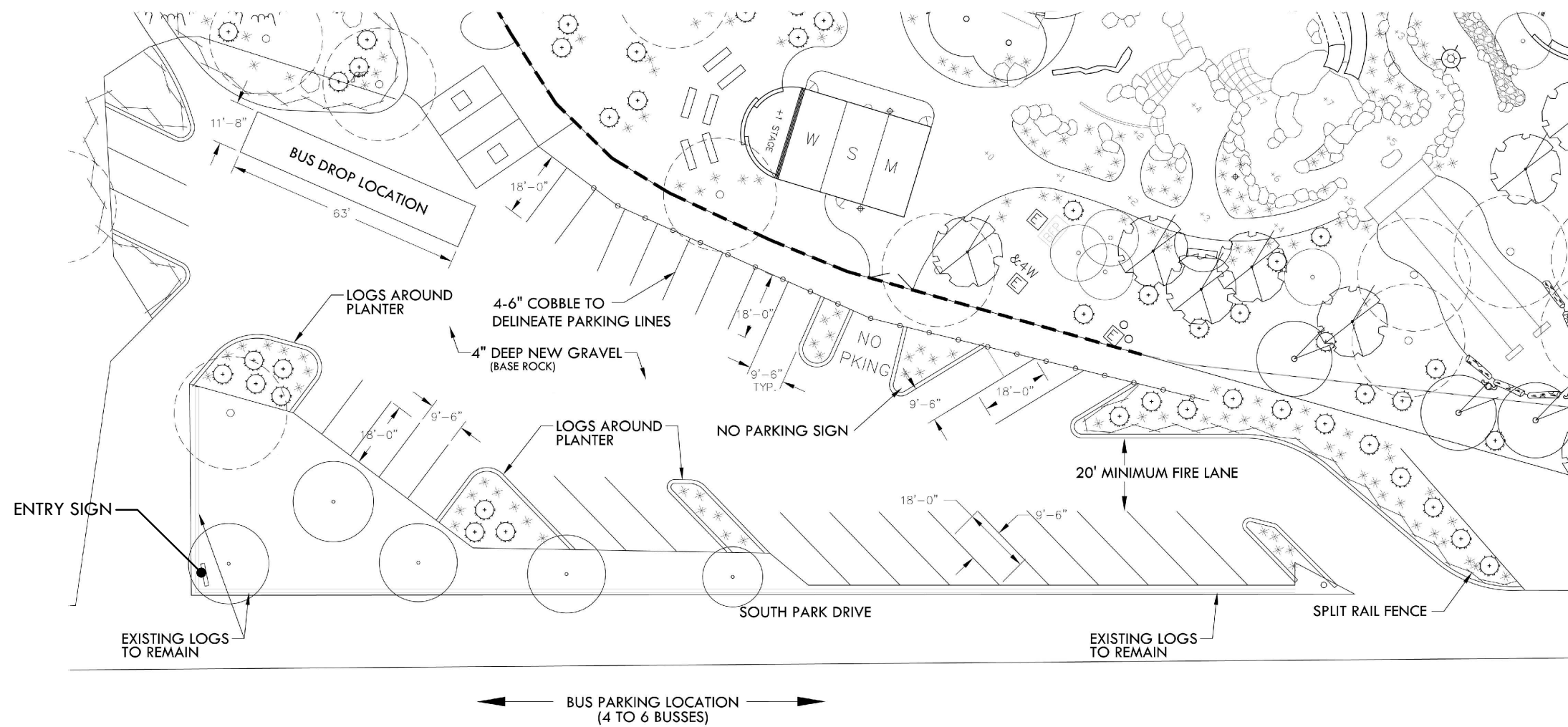
- MORE EFFICIENT USE OF EXISTING LAYOUT
- SHAPE IS AWKWARD
- ADDRESS BUS ACCESS/DROP OFF
- SIGNAGE - BUS DROP OFF ONLY, PARK ELSEWHERE
- ONE WAY TO NOT EASILY RECOGNIZED
- SIGN COLOR TOO BLENDING?
- SUMMER/SPRING - PARKING LOT FULL ALL WEEKEND
- PARKING LOT DUSTY



#6 PARKING LOT EXISTING CONDITIONS

PROPOSED IMPROVEMENTS

#	Item	Quantity	Unit	Cost	Total
#6	Parking Lot				
	Adjust Fence and Planters	1	LS	\$5,000.00	\$5,000.00
	Replace Gravel (9 Transfer Loads of Base Rock)	286	CY	\$30.00	\$8,580.00
	Entry Monument Inviting Children to Play (Statue)	1	EA	\$4,500.00	\$4,500.00
	New Entry Sign (Demo Old)	1	LS	\$5,000.00	\$5,000.00
	Fence Repair	1	LS	\$1,000.00	\$1,000.00
	Irrigation	1	LS	\$3,000.00	\$3,000.00
	Logs in Parking lot	1	LS	\$10,000.00	\$10,000.00
	Cobble's for Parking Lane Striping	1	LS	\$4,000.00	\$4,000.00
	Trees & Grasses	1	LS	\$3,000.00	\$3,000.00
	Sub Total				\$44,080.00
	The Contingency Includes Unforeseen Work That is Not Depicted on the Plan Such as Demolition, Grading & Drainage.			30% Contingency	\$13,224.00
				15% Soft Costs	\$6,612.00
				Total	\$63,916.00



#6 PARKING LOT

"CREATING FUN FOR THE NEXT GENERATION"

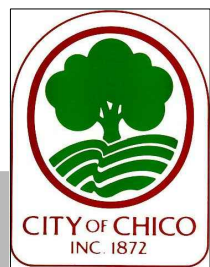
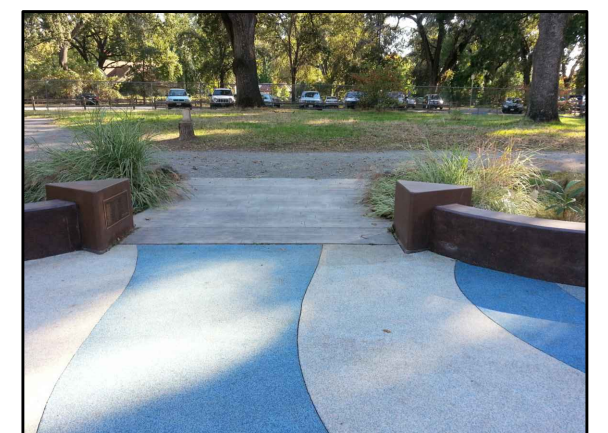
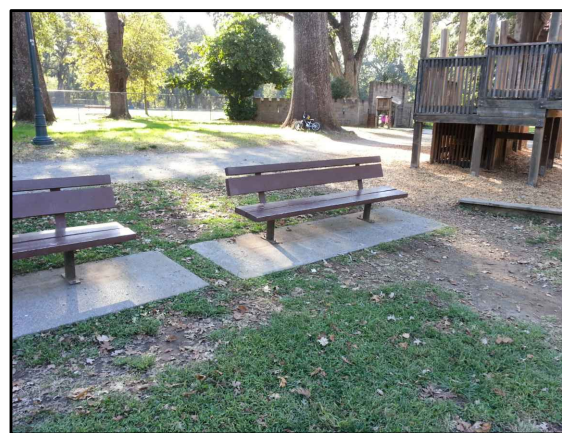
CONCEPTUAL DESIGNS AND IMPROVEMENTS





Analysis

- POURED IN PLACE FALL MATERIAL DIFFICULT TO MAINTAIN
- ADD SHOE CLEANER MAT, OR MINIMIZE EXPOSED SOIL
- REPLACE BROKEN TOT EQUIPMENT
- PLAN FOR FUTURE REMOVAL & REPLACEMENT OF FALL MATERIAL



#7 NICO PROJECT EXISTING CONDITIONS



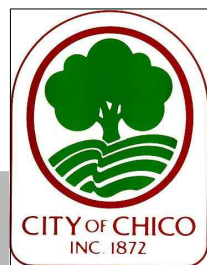
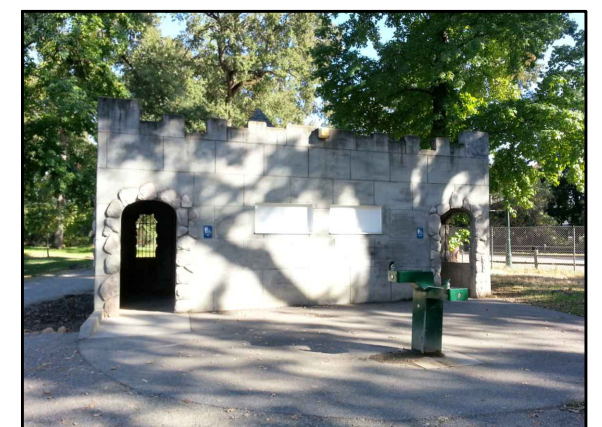
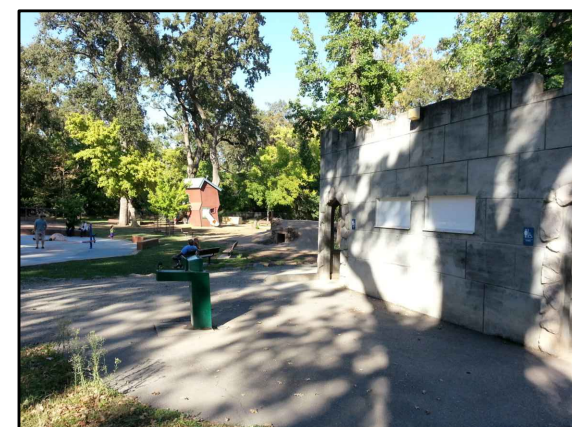
PROPOSED IMPROVEMENTS

#7	Nico Project	QTY		COST	TOTAL
	Remove & Replace Fall Material With Colored Grass	5,000	SF	\$25.00	\$125,000.00
	Replace Tot Rockers	2	EA	\$2,500.00	\$5,000.00
	Replace Stairs to Pirate Boat	1	EA	\$1,500.00	\$1,500.00
				Sub Total	\$131,500.00
The Contingency Includes Unforeseen Work That is Not Depicted on the Plan Such as Demolition, Grading & Drainage.				30% Contingency	\$39,450.00
				15% Soft Costs	\$19,725.00
				Total	\$190,675.00



Analysis

- NOT STRUCTURALLY SOUND
- NO HALLWAYS *REPLACE WITH NEW
- EASIER MAINTAIN
- HOSEABLE
- MORE STORAGE
- NUMBER OF STALLS OK (4)
- NEEDS GOOD LIGHT, VENTILATION
- KEEP CASTLE THEME?
- ELIMINATE ACCESS TO ROOF
- CHANGING TABLES
- REPLACE DRINKING FOUNTAIN

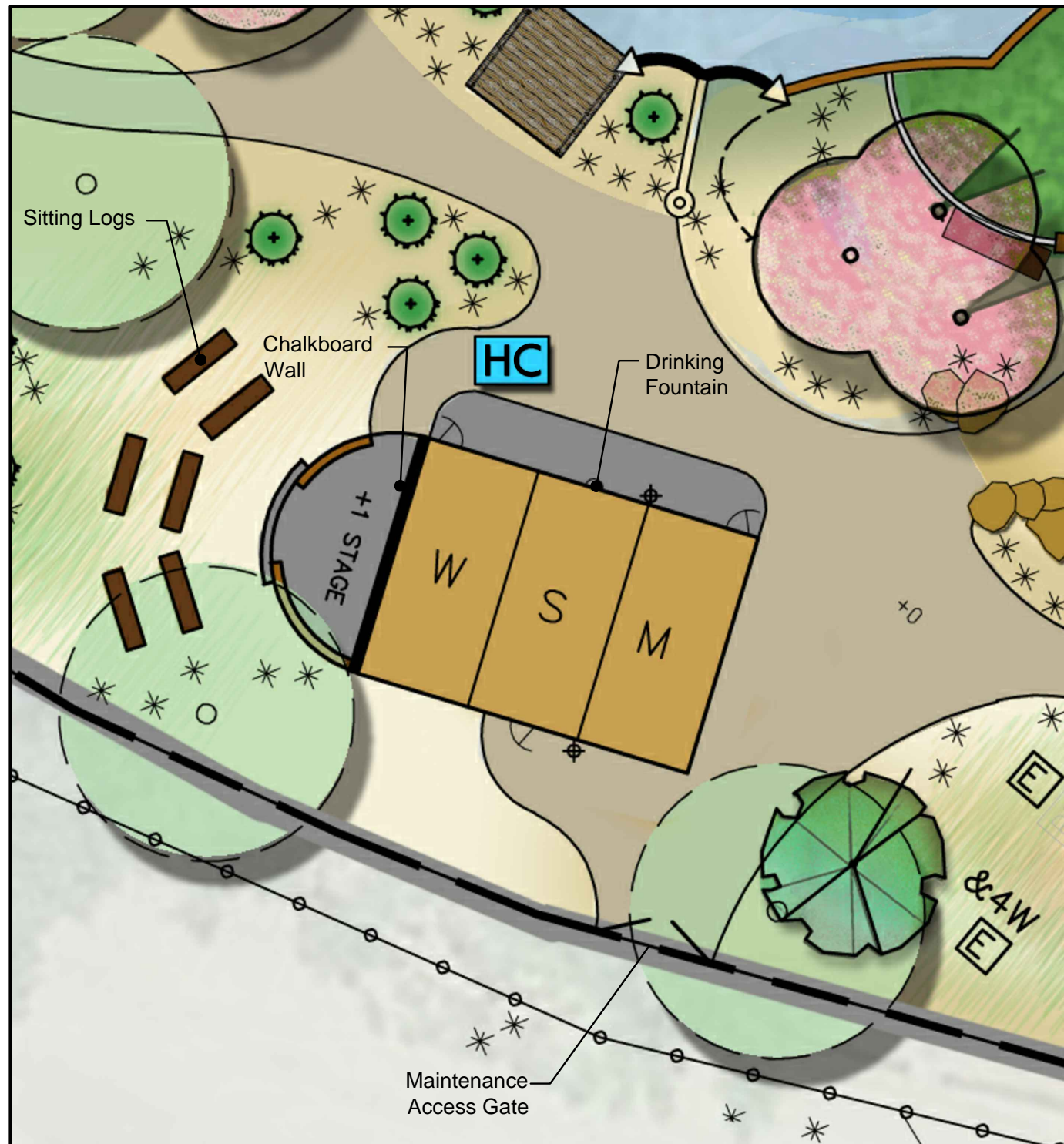


#8 RESTROOM

EXISTING CONDITIONS

PROPOSED IMPROVEMENTS

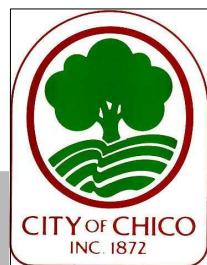
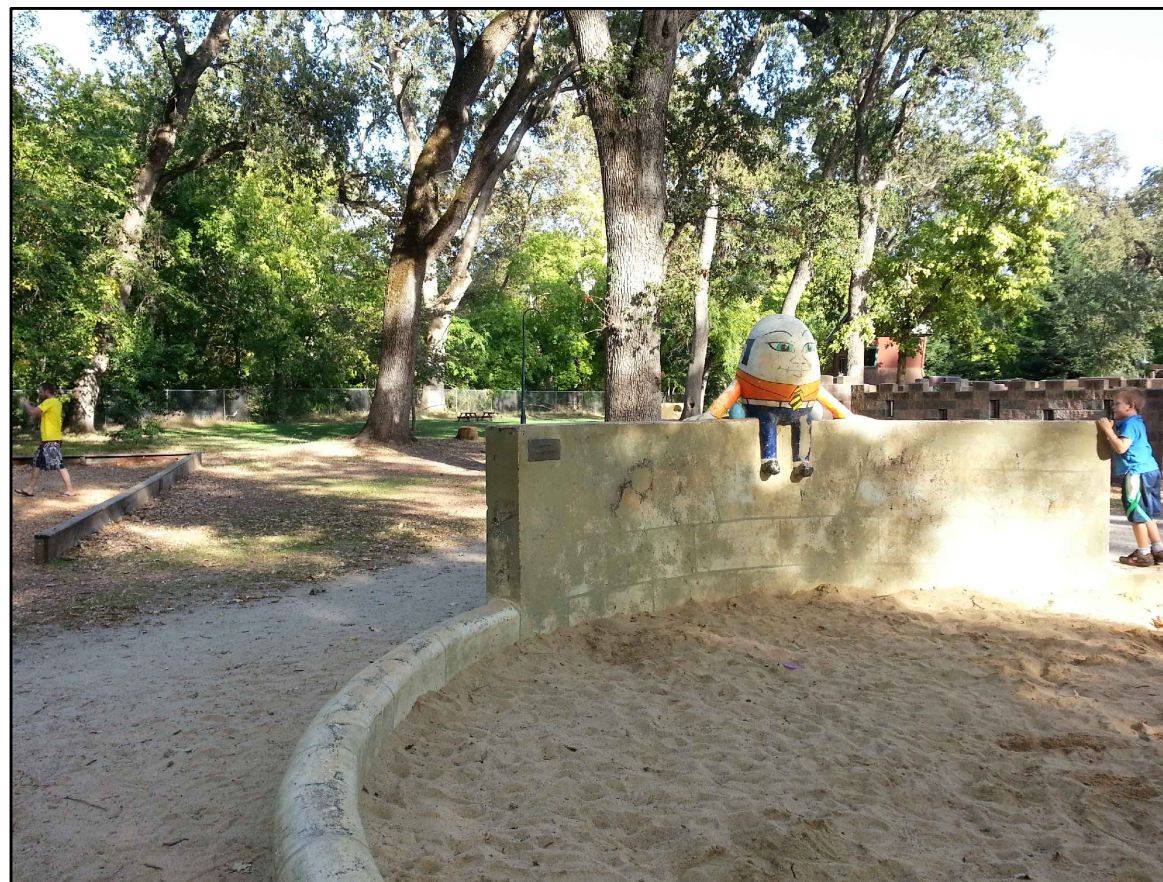
#8	Restrooms / Amphitheater	QTY		COST	TOTAL
	Concrete or CMU Block Building	1	LS	\$175,000.00	\$175,000.00
	Changing Tables	2	EA	\$250.00	\$500.00
	Maintenance Access Gate	1	LS	\$1,000.00	\$1,000.00
	Seat Wall	25	LF	\$55.00	\$1,375.00
	Small Amphitheater Stage	245	SF	\$25.00	\$6,125.00
	Sitting Logs	6	EA	\$500.00	\$3,000.00
	Drinking Fountain	1	EA	\$2,500.00	\$2,500.00
	Chalkboard Wall	1	LS	\$4,500.00	\$4,500.00
				Sub Total	\$194,000.00
	The Contingency Includes Unforeseen Work That is Not Depicted on the Plan Such as Demolition, Grading & Drainage.			30% Contingency	\$58,200.00
				15% Soft Costs	\$29,100.00
				Total	\$281,300.00



OUTDOOR CHALKBOARD

Analysis

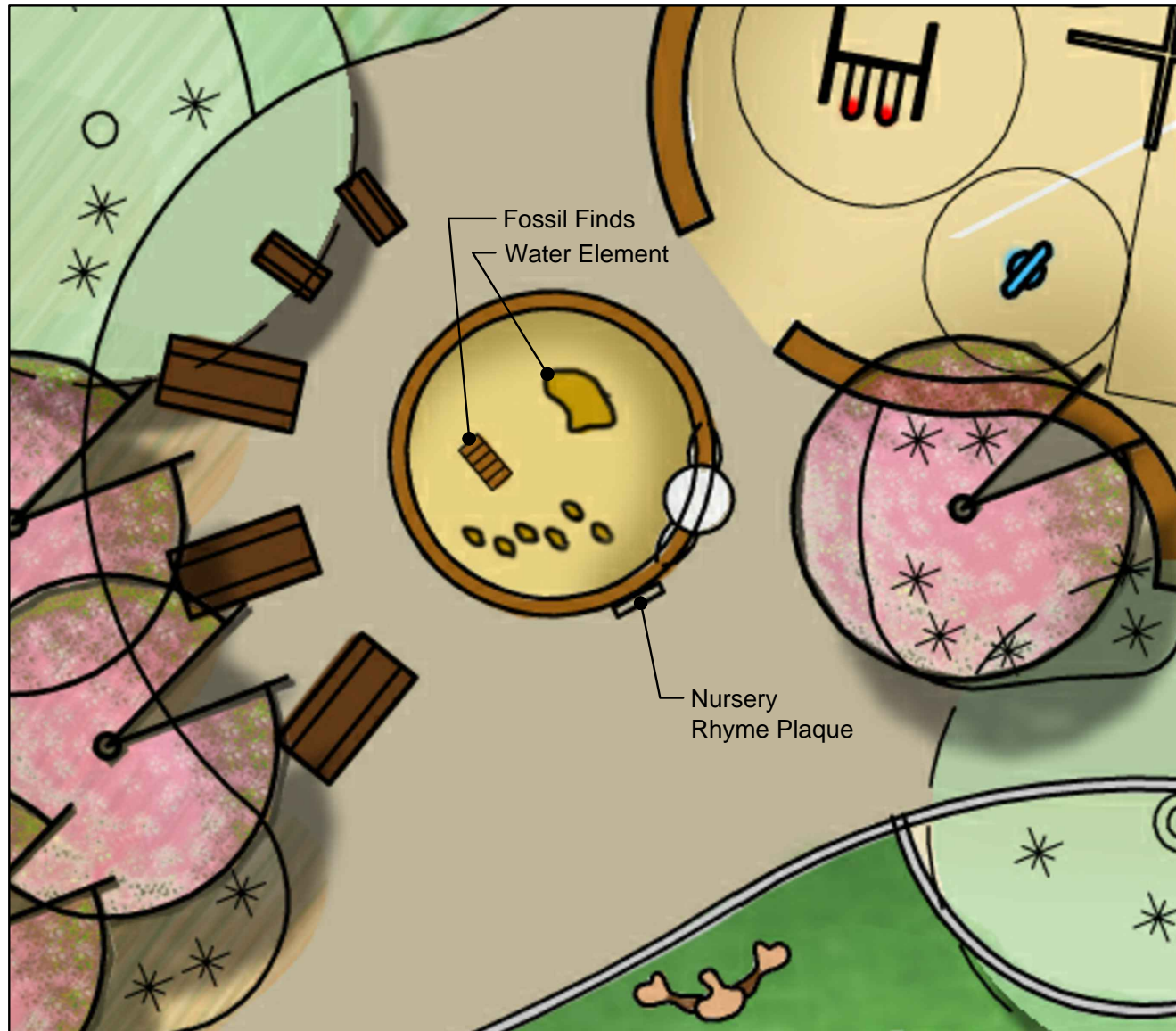
- SAND NEEDS CLEANED DAILY
- NEEDS REPAINTING
- NEEDS ABILITY TO WET SAND
- INCLUDE NEW PLAY EQUIPMENT WITHIN SAND AREA
- ADD TEETER TOTTER



#9 SAND PLAY EXISTING CONDITIONS

PROPOSED IMPROVEMENTS

#9	Sand Play (Humpty Dumpty)	QTY		COST	TOTAL
	Fossil Finds - Precast Concrete	2	EA	\$1,000.00	\$2,000.00
	Large Boulder in Middle (Play Table)	1	EA	\$650.00	\$650.00
	Water Element	1	LS	\$4,500.00	\$4,500.00
	Adult Sized Tables	1	EA	\$1,500.00	\$1,500.00
	Kid Sized Tables (Concrete)	2	EA	\$500.00	\$1,000.00
	Nursery Rhyme Plaque	1	EA	\$2,000.00	\$2,000.00
Sub Total					\$11,650.00
The Contingency Includes Unforeseen Work That is Not Depicted on the Plan Such as Demolition, Grading & Drainage.				30% Contingency	\$3,495.00
				15% Soft Costs	\$1,747.50
Total					\$16,892.50



SAND TABLE



FOSSIL FINDS - PRECAST CONCRETE



HUMPTY DUMPTY ELEMENTS PRECAST CONCRETE ELEMENTS IN SAND
- EGG SHELLS, ARMOR, SWORD HANDEL, HELMUT

#9 SAND PLAY

Analysis

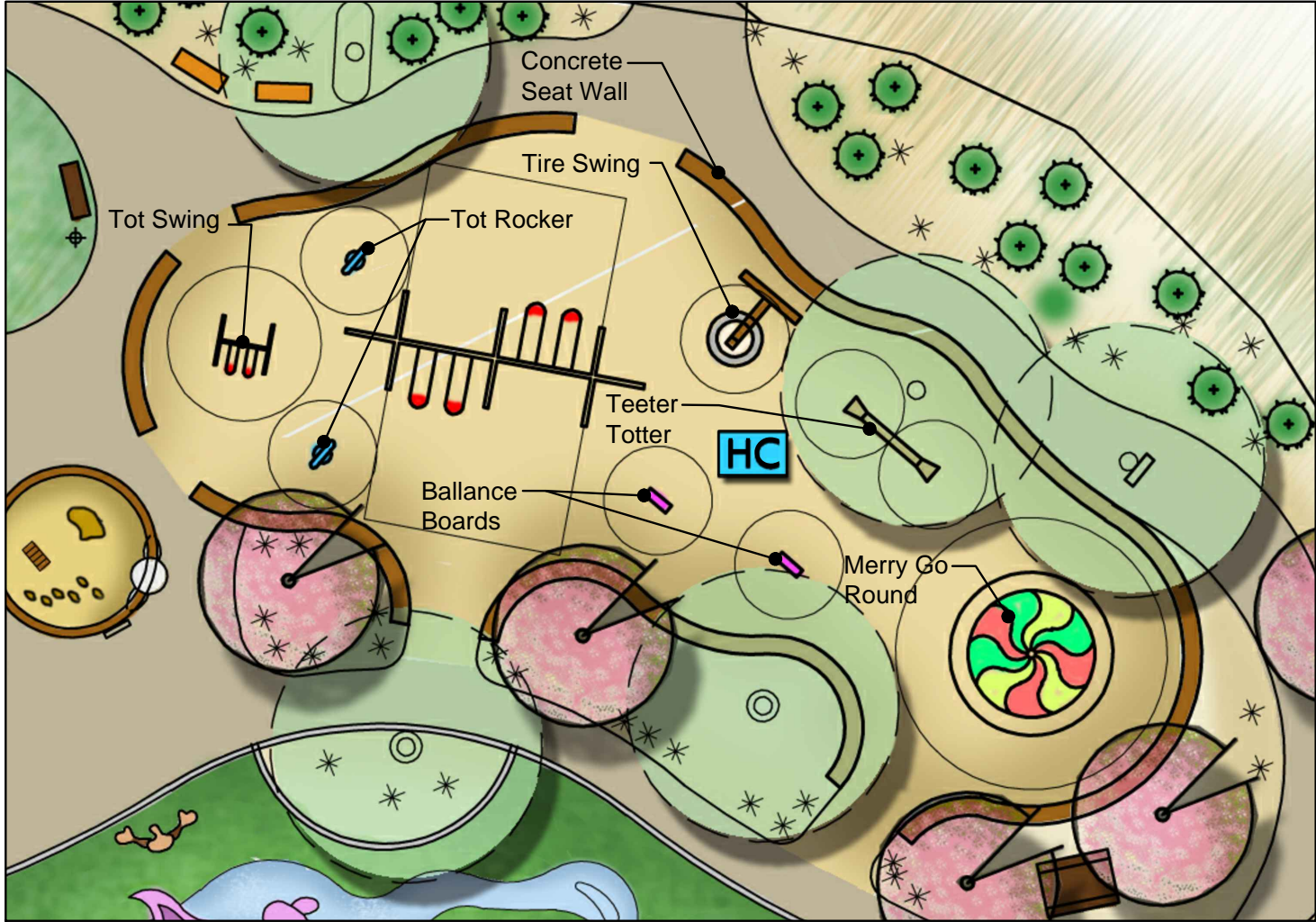
- NEED MORE SWINGS
- MIX OF TODDLER AND REGULAR AT NEW AND EXISTING
- EXISTING WOOD CHIP NEEDS REPLACED
- WOOD BORDER NEEDS REPLACED
- ADD SWINGS AND PLAY EQUIPMENT



#10 SWINGS
EXISTING CONDITIONS

PROPOSED IMPROVEMENTS

#10	Swings	QTY		COST	TOTAL
	Tot Merry Go Round	1	EA	\$2,500.00	\$2,500.00
	Concrete Seat Wall	275	LF	\$55.00	\$15,125.00
	Tire Swing	1	EA	\$3,200.00	\$3,200.00
	Tot Swing	1	EA	\$2,500.00	\$2,500.00
	Merry Go Round	1	EA	\$13,000.00	\$13,000.00
	Teeter Totter	1	EA	\$3,900.00	\$3,900.00
	Fall Material	4,500	SF	\$75.00	\$337,500.00
	Tot Rockers / Balance Boards	4	EA	\$1,500.00	\$6,000.00
Sub Total					\$383,725.00
The Contingency Includes Unforeseen Work That is Not Depicted on the Plan Such as Demolition, Grading & Drainage.				30% Contingency	\$115,117.50
				15% Soft Costs	\$57,558.75
Total					\$556,401.25



TOT BUCKETS



TOT MERRY GO ROUND



UNIQUE SWING OPTIONS



TIRE SWING



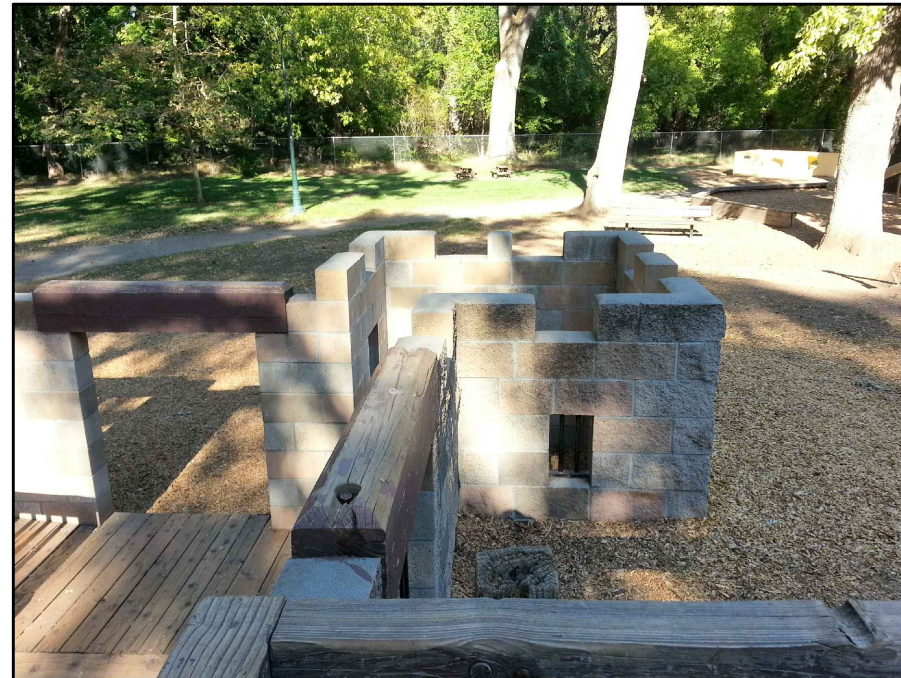
MERRY GO ROUND

#10 SWINGS

"CREATING FUN FOR THE NEXT GENERATION"

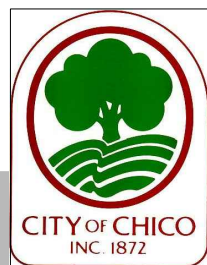
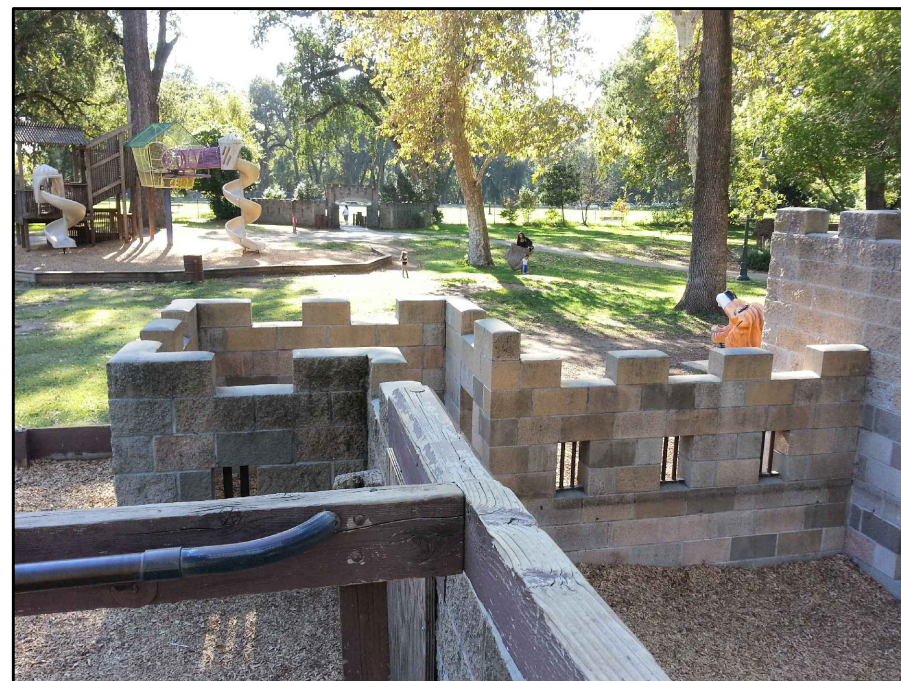
CONCEPTUAL DESIGNS AND IMPROVEMENTS



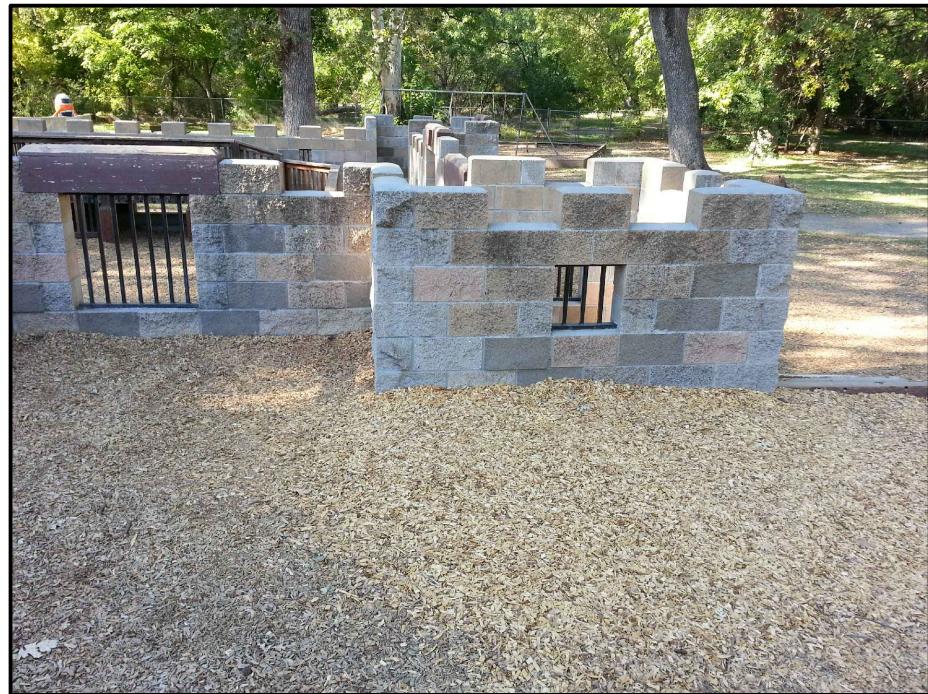
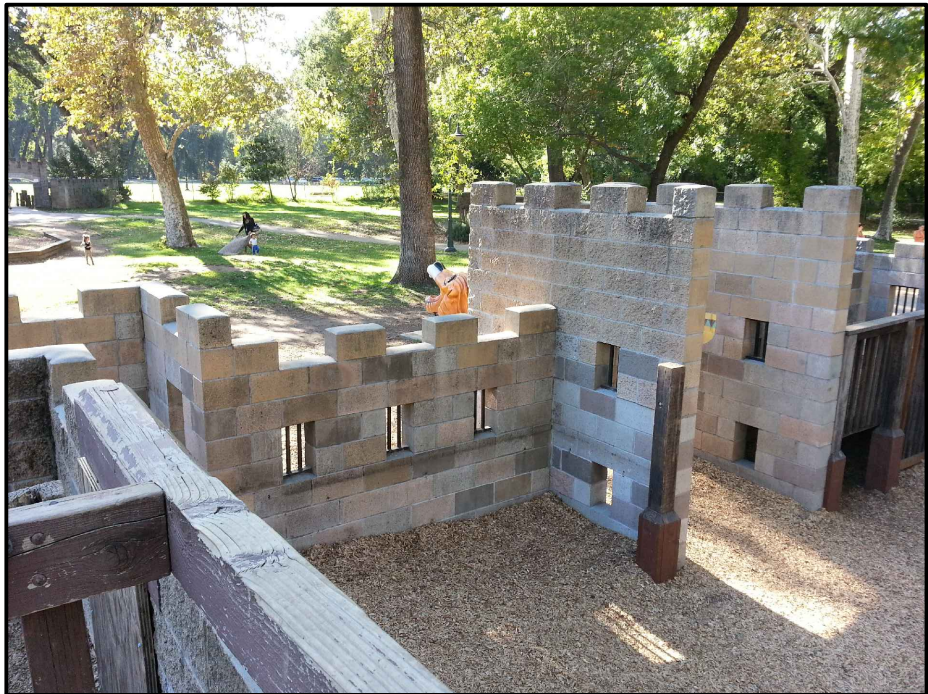


Analysis

- SLIDES IN AND OUT
- LABYRINTH LOW OKAY IF MESH TOP
- CONNECT MONKEY BARS
- ADD TOWERS ?
- CENTER USE ?
- (E) DRAINAGE GREAT
- COVER EXPOSED FOOTINGS
- NO WOOD



#11 LOCKSLEY CASTLE EXISTING CONDITIONS



"CREATING FUN FOR THE NEXT GENERATION"

#11 LOCKSLEY CASTLE

EXISTING CONDITIONS



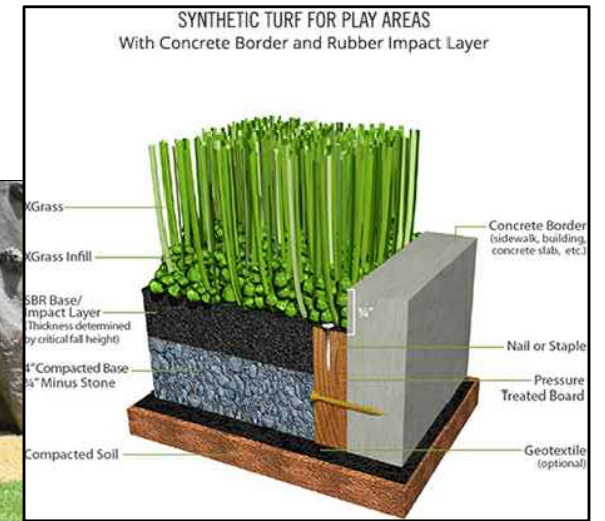
309 WALL STREET
CHICO, CA 95928
530.899.1616



JUMPING / BALANCE OPPORTUNITIES



SYNTHETIC TURF MULTI COLORED



ACCESSIBLE MUSIC CHIMES



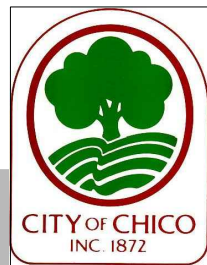
RAISED DECKING



SLIDES OUT OF CONCRETE



CASTLE FLAGS AT ENTRY



#11 LOCKSLEY CASTLE

CONCEPTUAL DESIGNS AND IMPROVEMENTS



PROPOSED IMPROVEMENTS

#11 Locksley Castle	QTY		COST	TOTAL
Entry Flags (Steel Powder coated Flags, Steel poles)	6	EA	\$450.00	\$2,700.00
6 Columns 24" High	6	EA	\$1,000.00	\$6,000.00
Troll and Moat Monster (pre-cast concrete)	4	EA	\$9,500.00	\$38,000.00
Synthetic Turf	2,500	SF	\$13.42	\$33,550.00
Sitting / Jumping Stones	4	EA	\$500.00	\$2,000.00
Dragon Slide	1	LS	\$70,000.00	\$70,000.00
Decks to be Metal Mesh Panels	305	SF	\$30.00	\$9,150.00
New Concrete Bridge	100	SF	\$9.50	\$950.00
Tower Two Story Tube Slide	3	EA	\$8,000.00	\$24,000.00
Accessible Music Chimes	1	EA	\$500.00	\$500.00
Double Slide Out	2	EA	\$5,000.00	\$10,000.00
			Sub Total	\$196,850.00
The Contingency Includes Unforeseen Work That is Not Depicted on the Plan Such as Demolition, Grading & Drainage.			30% Contingency	\$59,055.00
			15% Soft Costs	\$29,527.50
			Total	\$285,432.50

Tube Slides



TROLL



ACCESSIBLE MUSIC CHIMES / DRUMS



LARGE REPTILE SLIDE

#11 LOCKSLEY CASTLE

"CREATING FUN FOR THE NEXT GENERATION"

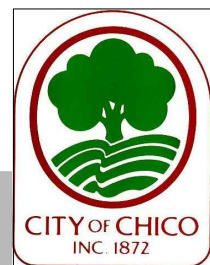
CONCEPTUAL DESIGNS AND IMPROVEMENTS



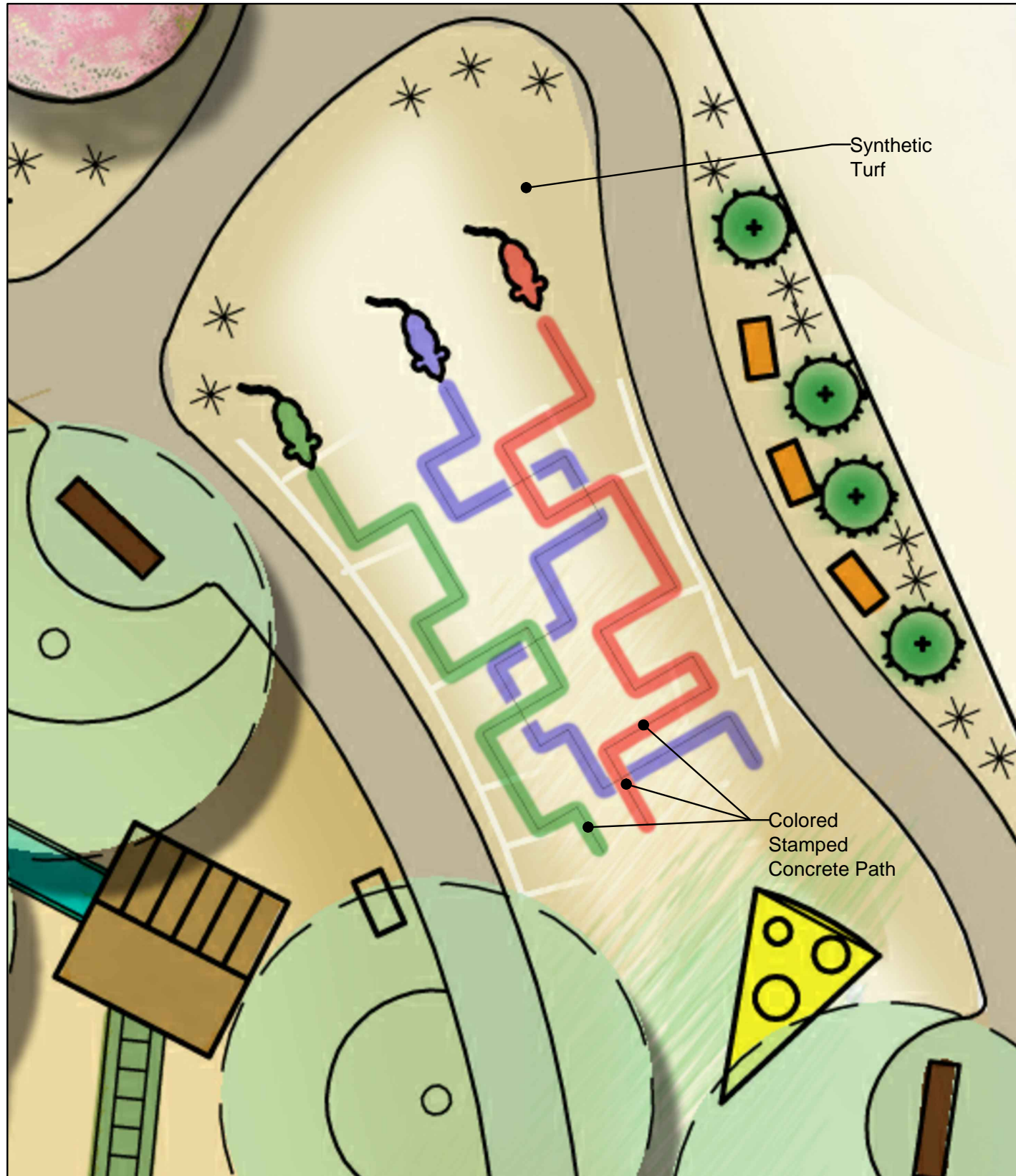
309 WALL STREET
CHICO, CA 95928
530.899.1616

Analysis

- NEEDS REPAINTING
- ADD PLAY VALUE



#12 SWISS CHEESE
EXISTING CONDITIONS



PROPOSED IMPROVEMENTS

#12	Swiss Cheese Area	QTY		COST	TOTAL
	Colored 3 Blind Mice (Pre-cast Concrete)	3	EA	\$4,000.00	\$12,000.00
	Colored Stamped Concrete	300	SF	\$15.00	\$4,500.00
	Synthetic Turf	2,450	SF	\$20.00	\$49,000.00
Sub Total					\$65,500.00
The Contingency Includes Unforeseen Work That is Not Depicted on the Plan Such as Demolition, Grading & Drainage.				30% Contingency	\$19,650.00
				15% Soft Costs	\$9,825.00
Total					\$94,975.00



COLORED 3 BLIND MICE (PRE-CAST CONCRETE)



MAZE

January 14, 2014
Dear Mr. Eisehoff,

Thank-you for asking for our ideas about Capen Acres. Our most favorite features are:

- The tunnels
- The cheese
- The sea serpent
- The castle.

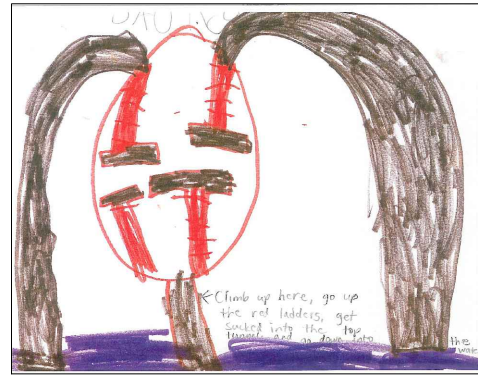
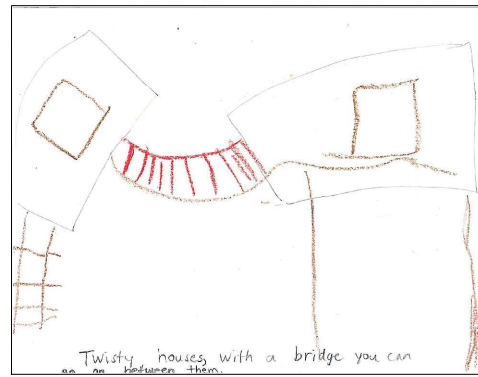
We do NOT like the lion drinking fountain, because it is broken.

We would most like to see a water slide or water feature added to Capen Acres.

We went on the internet and looked at "15 Amazing Playgrounds from Around the World" (<http://flavorville.com/281670/15-amazing-playgrounds-from-around-the-world/>). Included are a few of the pictures we drew of ideas we liked, some from this website.

Thank-you again for asking for our input!

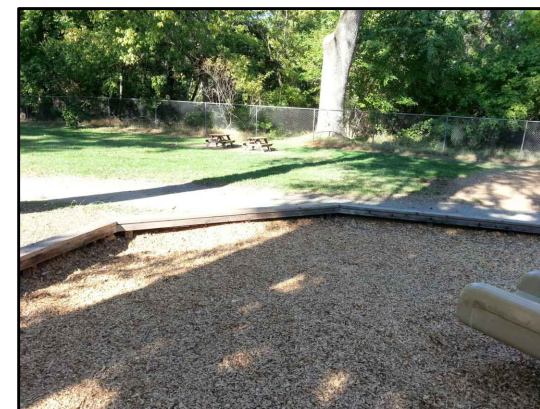
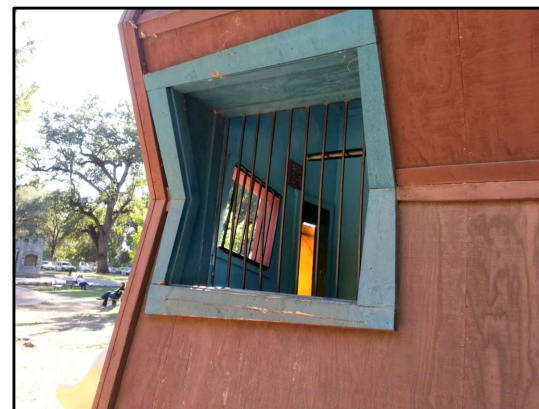
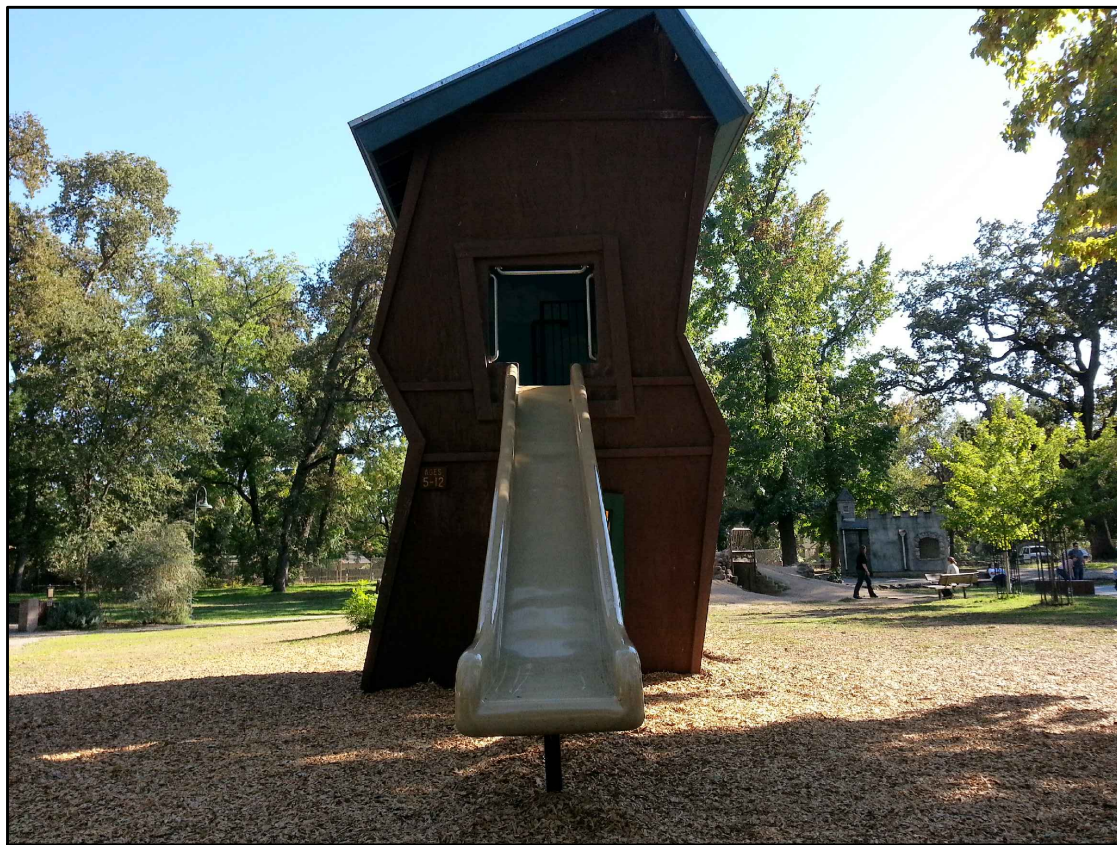
Sincerely,
The Kindergartners of Room 12
Hooker Oak School
(Teacher Jennifer Rassovich)



Analysis

- OPEN AIR LIKE BIRDCAGE
- ROOF LEAKS
- PROBABLY REBUILD BUT MAKE SIMILAR STRUCTURE - DRY ROT
- FALL MATERIAL CAN'T TOUCH WOOD
- ADD BIRD WATCHING VIEWER AND INTERPRETIVE PANEL
- MORE DURABLE WALLS TO RETAIN WOOD CHIPS BETTER / SEATWALLS
- ADD SPEAKING TUBES

HOOKER OAK SCHOOL - TEACHER / STUDENT INPUT





Climbing Wall

PROPOSED IMPROVEMENTS

#13 Crooked House	QTY		COST	TOTAL
Two Crooked Houses with Rope Lined Cable Bridge	1	LS	\$100,000.00	\$100,000.00
Double Slide	2	EA	\$2,500.00	\$5,000.00
Climbing Wall Grips on Outside of House	1	LS	\$1,500.00	\$1,500.00
Crooked Man, Cat and Mouse (Pre-cast Concrete)	3	EA	\$4,000.00	\$12,000.00
Nursery Rhyme Interpretive Panel	1	EA	\$2,500.00	\$2,500.00
Bird Watching Viewer Interpretive Panel	1	EA	\$2,500.00	\$2,500.00
Seat Wall	155	LF	\$45.00	\$6,975.00
			Sub Total	\$130,475.00
The Contingency Includes Unforeseen Work That is Not Depicted on the Plan Such as Demolition, Grading & Drainage.			30% Contingency	\$39,142.50
			15% Soft Costs	\$19,571.25
			Total	\$189,188.75



CROOKED HOUSE SKETCH

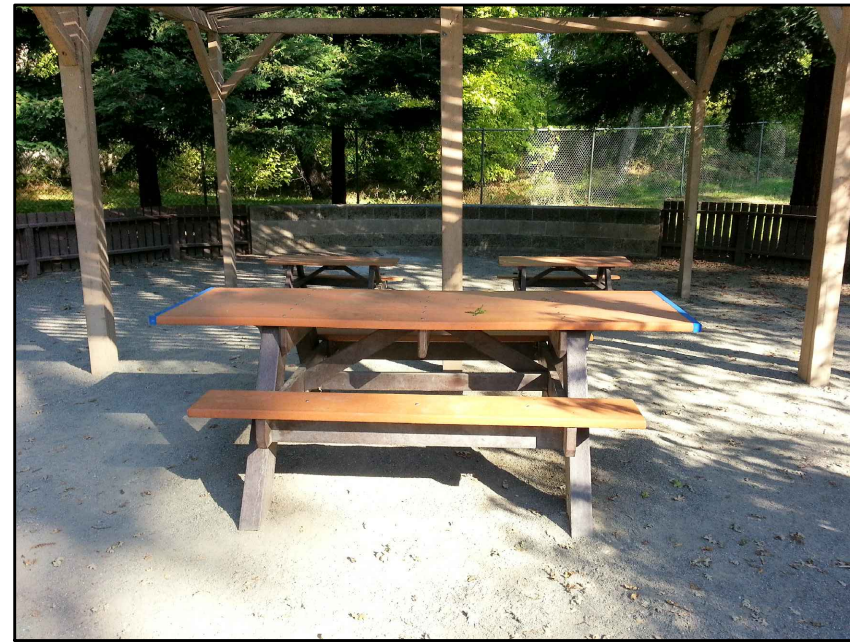
#13 CROOKED HOUSE

CONCEPTUAL DESIGNS AND IMPROVEMENTS

"CREATING FUN FOR THE NEXT GENERATION"

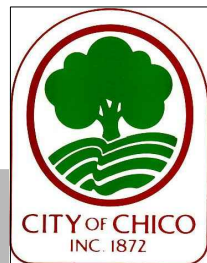


309 WALL STREET
CHICO, CA 95928
530.899.1616



Analysis

- (E) STRUCTURE WORKS WELL
- NEED TRASH CAN
- KEEP TABLES MOVEABLE, BUT ADD SEATING - (NOT MUCH ROOM)
- ADD SEATING TO PERIMETER WALL
- REPLACE WOOD FENCE WITH DECORATIVE STEEL
- JUNGLE THEME OR CIRCUS WITH OLD DRINKING FOUNTAIN LION AS SCULPTURE
- ADD BULK TO COLUMN BASES



#14 BIRTHDAY RING 'B' ROBIN HOOD

EXISTING CONDITIONS

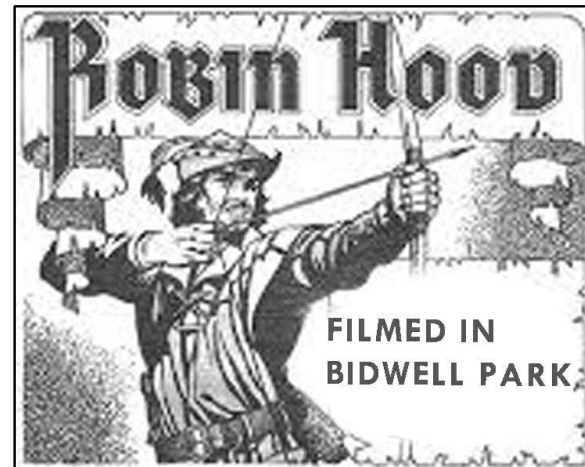
PROPOSED IMPROVEMENTS



#14	Birthday Ring 'B'	QTY		COST	TOTAL
	Robin Hood Themed Facade Canopy	1	LS	\$5,000.00	\$5,000.00
	Large Arrow Into Entry Design	1	EA	\$3,000.00	\$3,000.00
	Robin Hood Rewards on Trees	5	EA	\$500.00	\$2,500.00
	Bulk to Column Bases	2	EA	\$1,200.00	\$2,400.00
	Dry Creek - 3" to 8" Washed Cobble Over Fabric	650	SF	\$5.00	\$3,250.00
	Balance Logs Over Dry Creek	1	LS	\$2,500.00	\$2,500.00
	Benches	2	EA	\$1,500.00	\$3,000.00
	Throne Seat w/ Maid Marian	1	LS	\$7,800.00	\$7,800.00
	Interpretive Panel	1	LS	\$4,000.00	\$4,000.00
Sub Total					\$33,450.00
The Contingency Includes Unforeseen Work That is Not Depicted on the Plan Such as Demolition, Grading & Drainage.				30% Contingency	\$10,035.00
				15% Soft Costs	\$5,017.50
Total					\$48,502.50



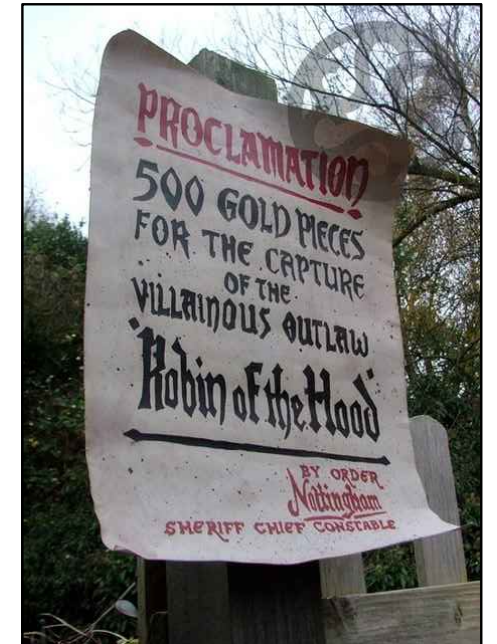
ROBIN HOOD THEMED FACADE CANOPY



INTERPRETIVE PANEL



MAID MARIAN



ROBINHOOD REWARDS ON TREES

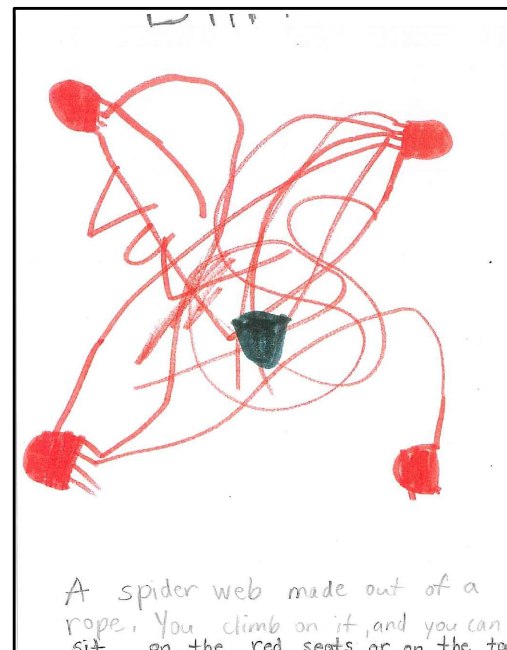
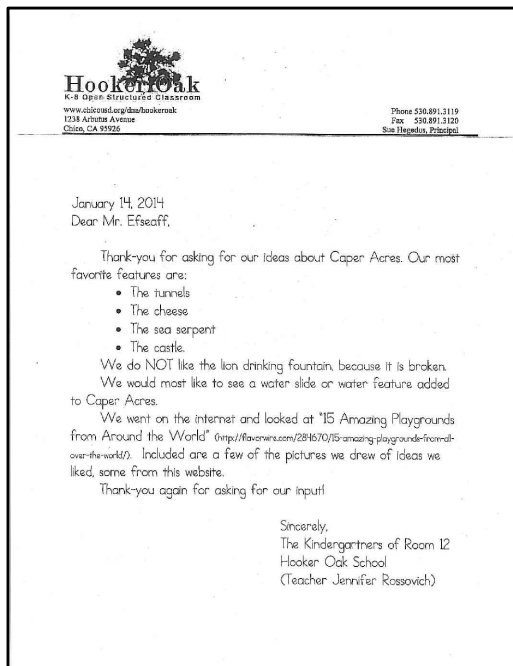
#14 BIRTHDAY RING 'B'

"CREATING FUN FOR THE NEXT GENERATION"

CONCEPTUAL DESIGNS AND IMPROVEMENTS



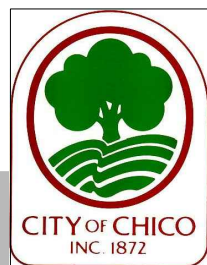
309 WALL STREET
CHICO, CA 95928
530.899.1616



Analysis

- TWO TOWER TYPE ENTRY TO "CAVE" BUT NO COVER
- HAVE WEB CLIMBER, BOULDERS LIKE RIVERBEND PARK
- GUNITE BEAR HOLE / MONKEY FACE THEME
- BIGGER TUNNELS / SEE THROUGH
- TREE TUNNEL (PRE-CAST)
- SLIDES DOWNHILL

HOOKER OAK SCHOOL TEACHER / STUDENT INPUT



#15 THE TUNNELS EXISTING CONDITIONS



MONKEY FACE PLAN VIEW

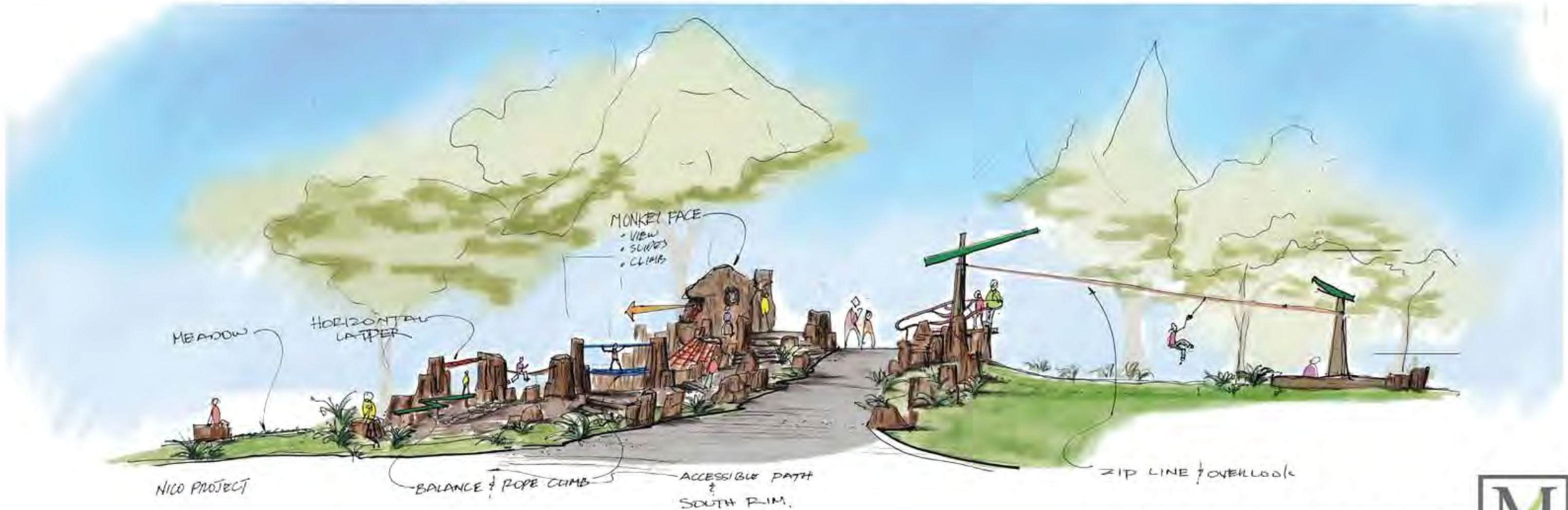


MONKEY FACE ROCK

The Monkey Face play area consists of a variety of custom play structures and obstacles. The play area playfully mimics one of the local hiking hot spots in upper Bidwell Park known as 'Monkey Face'. The proposed site will be constructed of gunite and basalt rocks to form a unique structures with small climbing walls, 'north rim and south rim' climbing routes, rope climbing obstacles, and slides. The inside of the 'Monkey Face' will be open offering views of the Caper Acres and be ADA accessible from the path that loops around the entire park.

Robin Hood's Escape - Zip Lines

The Robin Hood Zip Lines are proposed behind the 'Monkey Face' play area and will be accessible from the ADA path. Proposed are two 40' long Zip Lines with landing platforms and fall material the Zip Lines end at Robin Hood's Lair.



#15 MONKEY FACE



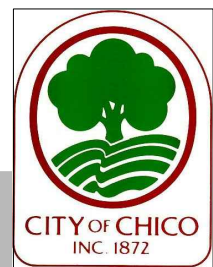
WIRE ROPE CLIMBING



ROPES & ROCKS CLIMBING OPPORTUNITIES



BALANCE BEAMS



#15 THE TUNNELS

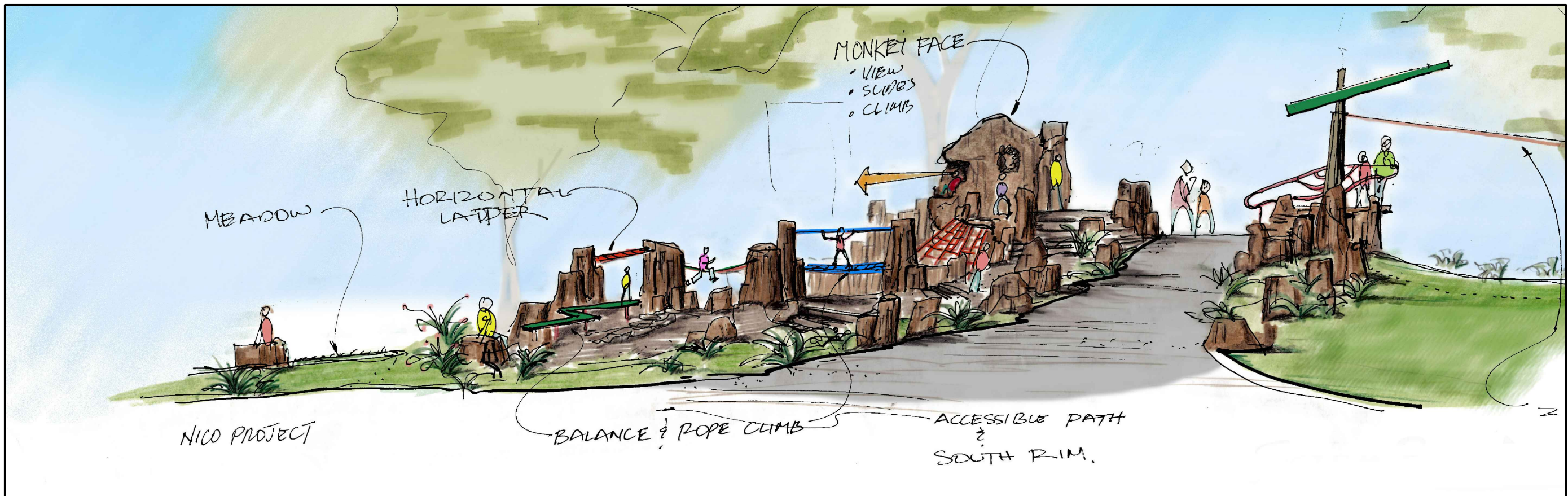
CONCEPTUAL DESIGNS AND IMPROVEMENTS



PROPOSED IMPROVEMENTS

#15	Monkey Face Climbing Structure	QTY		COST	TOTAL
	Monkey Face Climbing Wall and Rock	1	LS	\$150,000.00	\$150,000.00
	Multiple Rope (Steel Cable) Climbing Structures	1	LS	\$35,000.00	\$35,000.00
	Concrete Slide	2	EA	\$6,000.00	\$12,000.00
	Balance beam (Ground Log)	1	EA	\$2,295.00	\$2,295.00
	Interactive Spider Play Structure	1	EA	\$66,000.00	\$66,000.00
	Dg Access	1	LS	\$4,000.00	\$4,000.00
	Fall Material (12" Wood Chips)	130	CY	\$75.00	\$9,750.00
				Sub Total	\$279,045.00
	The Contingency Includes Unforeseen Work That is Not Depicted on the Plan Such as Demolition, Grading & Drainage.			30% Contingency	\$83,713.50
				15% Soft Costs	\$41,856.75
				Total	\$404,615.25

Concrete Slides



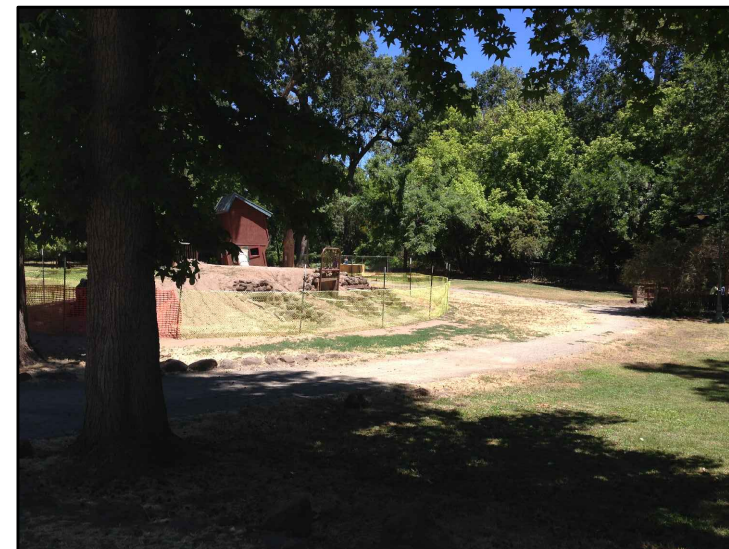
#15 MONKEY FACE

"CREATING FUN FOR THE NEXT GENERATION"

CONCEPTUAL DESIGNS AND IMPROVEMENTS

Analysis

- TWO TOWER TYPE ENTRY TO "CAVE" BUT NO COVER
- HAVE WEB CLIMBER, BOULDERS LIKE RIVERBEND PARK
- GUNITE BEAR HOLE / MONKEY FACE THEME
- BIGGER TUNNELS / SEE THROUGH
- TREE TUNNEL (PRE-CAST)
- SLIDES DOWNHILL



#16 ROBIN HOOD'S LAIR EXISTING CONDITIONS



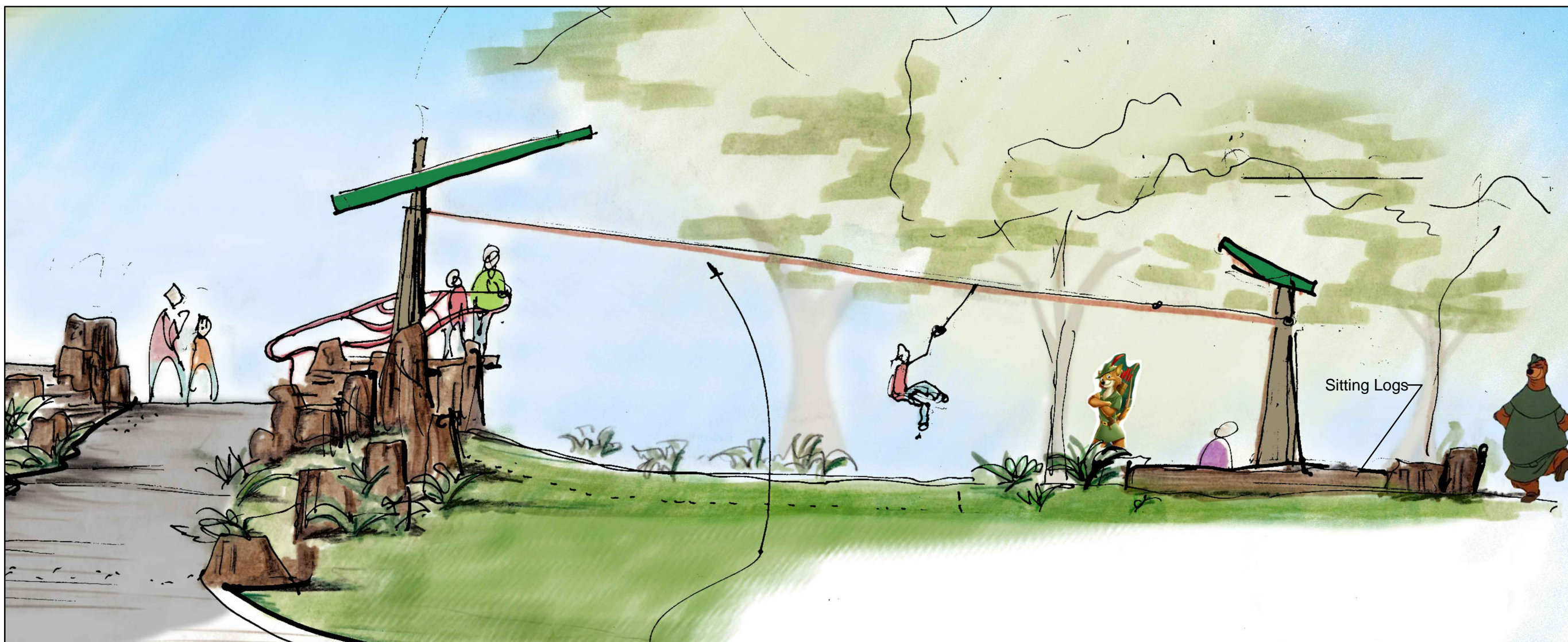
ROBIN HOOD STATUES



ZIP LINE

PROPOSED IMPROVEMENTS

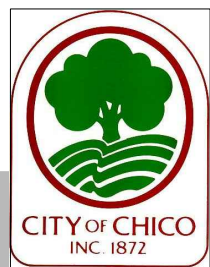
#16 Robin Hood's Lair	QTY		COST	TOTAL
Two Zip Lines - Race Into Robin Hood's Lair	2	EA	\$12,500.00	\$25,000.00
Sitting Logs at end of zip line run	5	EA	\$500.00	\$2,500.00
Fall Material (12" Wood Chips)	68	CY	\$75.00	\$5,100.00
Zipline Platform	1	LS	\$10,000.00	\$10,000.00
Statues of Robin Hood Characters	5	EA	\$7,800.00	\$39,000.00
			Sub Total	\$81,600.00
The Contingency Includes Unforeseen Work That is Not Depicted on the Plan Such as Demolition, Grading & Drainage.			30% Contingency	\$24,480.00
			15% Soft Costs	\$12,240.00
			Total	\$118,320.00



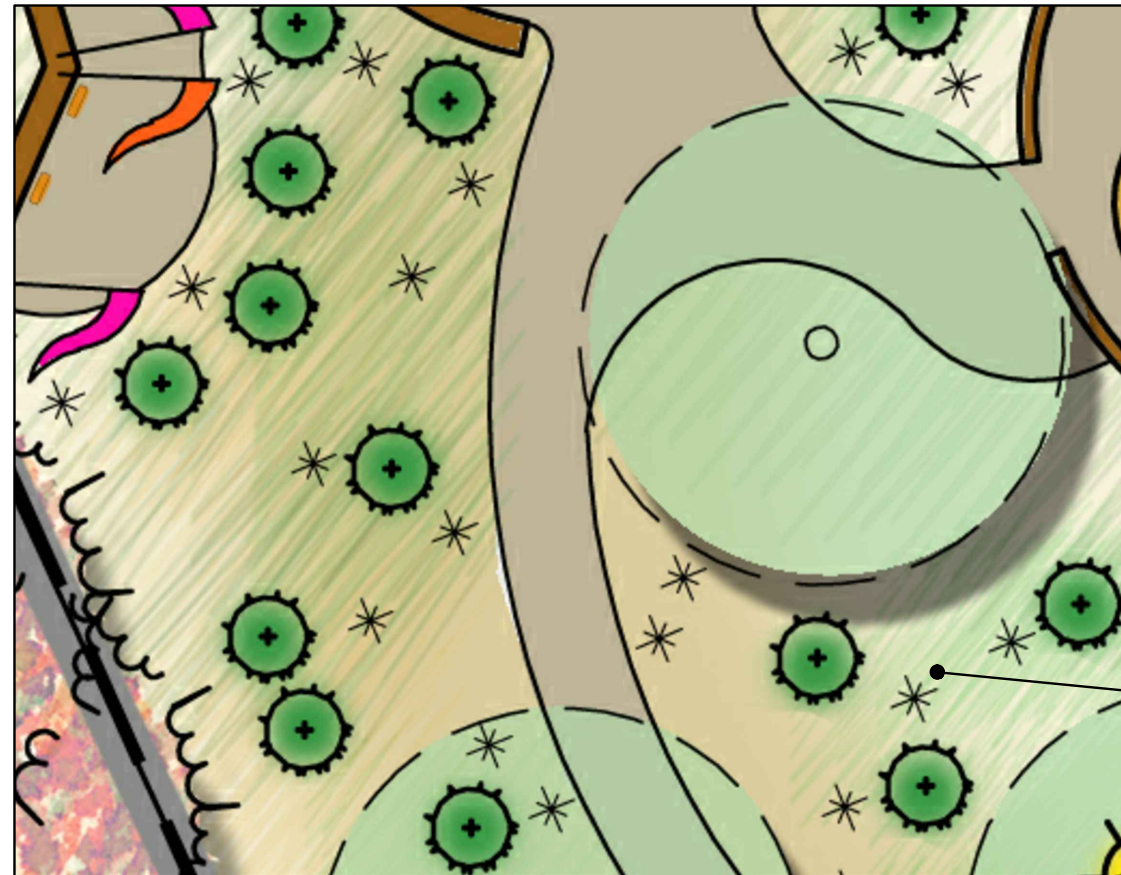
#16 ROBIN HOOD'S LAIR

Analysis

- LARGE TURF SPACES DIFFICULT TO MAINTAIN



#17 REVEGETATION EXISTING CONDITIONS



RE-VEGETATION AREAS

PROPOSED IMPROVEMENTS

#17	Revegetation	QTY		COST	TOTAL
	Remove any Existing Turf or Vegetation	1	LS	\$5,000.00	\$5,000.00
	Plant Native Grasses & Shrubs	481	EA	\$25.00	\$12,025.00
	Walk on Bark Mulch 2" Deep (Delivered)	200	CY	\$45.00	\$9,000.00
				Sub Total	\$26,025.00
The Contingency Includes Unforeseen Work That is Not Depicted on the Plan Such as Demolition, Grading & Drainage.				30% Contingency	\$7,807.50
				15% Soft Costs	\$3,903.75
				Total	\$37,736.25

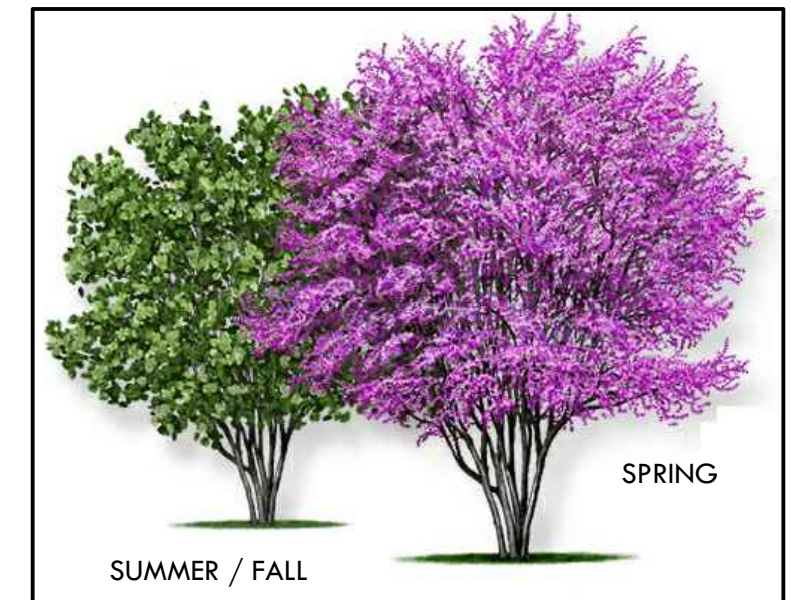
NATIVE GRASSES AND SHRUBS



NATIVE GRASSES AND SHRUBS



CA REDBUD



#17 REVEGETATION