



NEWS RELEASE
City of Chico
www.ci.chico.ca.us

FOR IMMEDIATE RELEASE: June 17, 2024

****MEDIA ALERT****

PRESCRIBED BURN IN MIDDLE BIDWELL PARK SCHEDULED FOR WEDNESDAY, JUNE 19, 2023

CHICO, CA, (June 17, 2024)- The Park Division, in partnership with the Chico Fire Department, the Big Chico Creek Ecological Reserve and Butte Cal-TREX, have scheduled a prescribed burn in Middle Bidwell Park on **Wednesday June 19, 2024** from beginning at **8:30 a.m. and lasting until the mid-afternoon**. The focus of the upcoming burn will be the grassland area north of Upper Park Road between the main entrance gate and Horseshoe Lake Parking E, (please see attached maps). However, this burn will depend on the right temperature, wind, and other weather conditions on Wednesday.

For the public's safety, Parking Lots B (Easter Cross), C (Observatory), D (Rod & Gun Club) and E (Horseshoe Lake), and the western portions of the Fence Line, Middle, and North Rim Trails will be closed. Signs will be placed at these trailheads. A Ranger will be at the main gate and monitors will be placed at other locations to help inform park users of the burn.

Access to the golf course will be allowed, but golfers are asked to use caution when driving along Upper Park Road during burning operations. The Parks Division and Fire Department are also asking for the public's cooperation by avoiding this area until after the burn if possible and complying with the parking lot and trail closures.

A Burn Permit has been issued and a Smoke Management Plan has been approved by the Butte County Air Quality Management District for this prescribed burn. The primary purpose of the burn is to further the following goals of the Bidwell Park Master Management Plan to:

1. Use prescribed fire as a management tool to protect and enhance habitats and reduce the risk of catastrophic fires within Bidwell Park.
2. Eliminate undesirable or invasive plants that compete with or reduce native vegetation, and/or degrade wildlife habitat for endangered or threatened species.

3. Improve the age, class, and diversity within existing mature, even-age stands of oak trees and other plant communities by encouraging young oak recruitment, which is another positive byproduct of fire.
4. Reduce the fuels and star thistle infestations along nearby roads, trails, and other park amenities to increase the safety for community members and pets who use the park daily.

For more information, please contact Linda Herman, Park & Natural Resources Manager at (530) 896-7241, or Fire Deputy Chief of Operations Chris Zinko at (530) 521-2024.

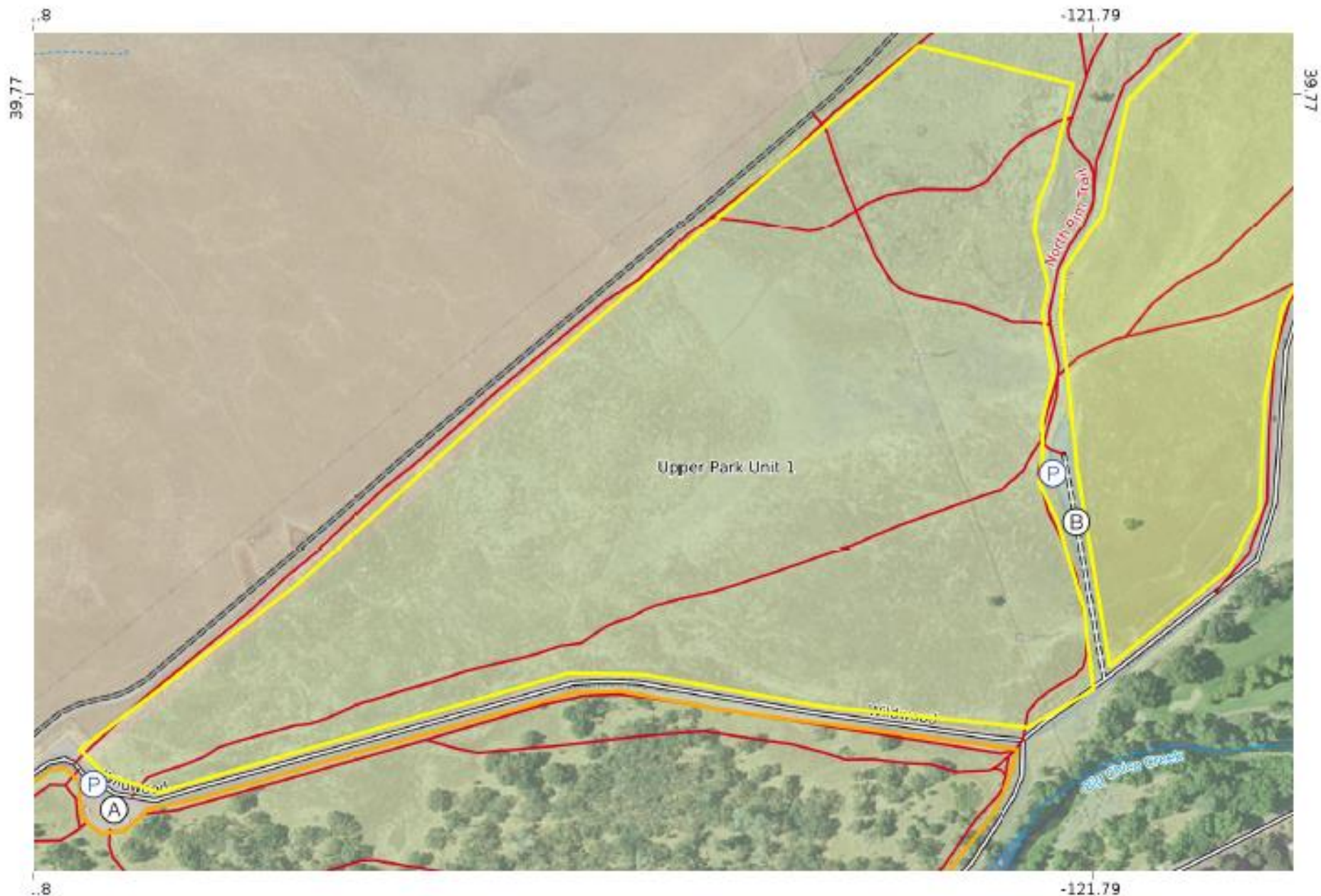
Located in Butte County, California, Chico is the cultural and economic center of the northern Sacramento Valley and the largest city north of Sacramento. Known as a college town, the home of California State University, Chico and for Bidwell Park, one of the largest urban parks in the world. For more information, visit www.chico.ca.us.

###

Distribution:

All City of Chico
All BPPC
All Media

UPPER PARK BURN UNIT #1 MAP

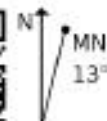


Upper Park Unit 1 (57 Acres)

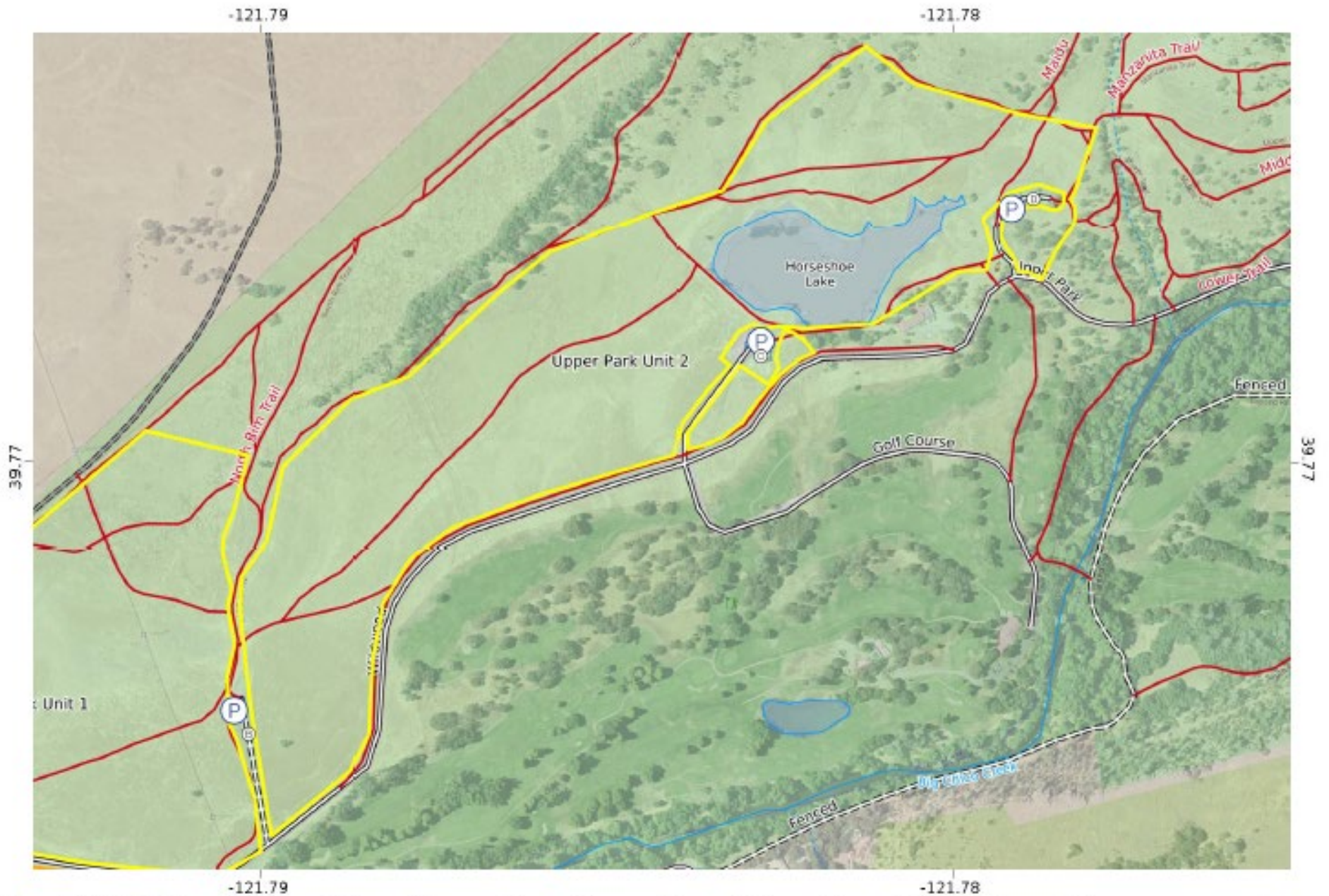
WG584
USNG Zone 10SKK



Scale 1:4110 1 inch = 343 feet



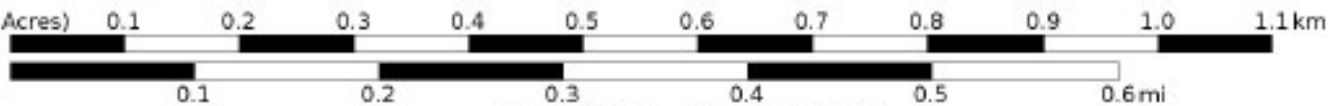
UPPER PARK BURN UNIT #2 MAP



Upper Park Unit 2 (72 Acres)

WGS84

USNG Zone 10SK



Scale 1:6288 1 inch = 524 feet

