



**NEWS RELEASE**  
**City of Chico**  
[www.ci.chico.ca.us](http://www.ci.chico.ca.us)

**FOR IMMEDIATE RELEASE:** August 15, 2024

**Contact:** Linda Herman, [linda.herman@chicoca.gov](mailto:linda.herman@chicoca.gov) or (530) 896-7800

**\*\*\*MEDIA ALERT\*\*\***

## **PARTIAL REOPENING OF UPPER BIDWELL PARK**

**(Chico, CA – August 15, 2024)** - Upper Bidwell Park was significantly impacted by the Park Fire in the areas where it initiated and then burned back into the park near Devil's Kitchen continuing to the end of Upper Park Road. . The south side of the park from Bloody Pin Trail to Ten Mile House Road was also impacted. These impacts left many burned trees and associated hazards.

After an assessment of the road, trails, , and the removal of hazardous trees along the road where the fire initiated, the City has determined that portions of Upper Bidwell Park can be reopened per the attached map. The areas to be reopened starting tomorrow, **Friday August 16, 2024**, are as follows.

### **Open Areas on North Side of Bidwell Park:**

1. Main Entrance Gate at Wildwood Avenue.
2. North side of Five Mile Recreation Area
3. Parking Lots A to Parking Lots E (Horseshoe Lake)
4. Chico Observatory
5. Upper Park Gun Range
6. Upper Park Road to Diversion Dam Gate
7. Swimming areas at Day Camp, Alligator Hole, and Bear Hole
8. Trails are opened as follows:
  - North Rim Trail/ Fenceline Trail Is Open To Red Bud Trail Only.
  - Middle Trail Is Open To Bear Hole Connector Only.
  - Upper Trail And Upper Upper Trail Open To Middle Trail Connector Only
  - Yahi Trail Is Open To Bear Hole Only.

### **Open Areas on South Side of Bidwell Park:**

1. Trails, except :Legacy Trail, from Annie Bidwell Trail access at Centennial & Chico Canyon Road to Bloody Pin Trail only.
2. Peregrine Point Disc Golf Course

For continued public safety, the following burned sections on both the North and South side of Upper Bidwell Park will **remain closed to all park users (bicyclist, joggers, hikers, etc.)** until further notice:

- Upper Park Road beyond Diversion Dam gate
- Ten Mile House Road
- On the North side, all portions of trails past the designated trail end points listed in Section 8. above.
- On the South Side, all portions of trails east of Bloody Pin trail.

The City is asking for the public's cooperation by not entering the closed areas. Pursuant to Chico Municipal Code Section 12.R.04.370 anyone who enters a designated closed area of Bidwell Park is subject to citations and fines.

The Park Division appreciates the public's understanding during this closure. The Park Division of Public Works O&M will continue to mitigate hazards, deploy rehabilitation efforts and open additional areas as quickly as possible. For more information, contact Linda Herman, City of Chico Park & Natural Resources Manager at (530) 896-7800.

*Located in Butte County, California, Chico is the cultural and economic center of the northern Sacramento Valley and the largest city north of Sacramento. Known as a college town, the home of California State University, Chico and Bidwell Park, one of the largest urban parks in the world. For more information, visit [www.chico.ca.us](http://www.chico.ca.us).*

###

**Distribution:**

All City of Chico

All BPPC

All Media

All BPPC Interested Parties



# Park Fire - Upper Park Trail Status

## WARNING - ENTERING BURNED AREA

POTENTIAL HAZARDS INCLUDE FALLING TREES AND LIMBS, FALLING ROCKS, HOT SPOTS, AND FLASH FLOODING.

PORTIONS OF ROADS AND TRAILS MAY BECOME DAMAGED OR BLOCKED.

TO REDUCE RISK OF INJURY:

- STAY ON TRAIL
- BE ALERT FOR FALLING TREES
- STAY OUT OF BURNED AREAS
- STAY OFF CLOSED TRAILS

### CLOSURES

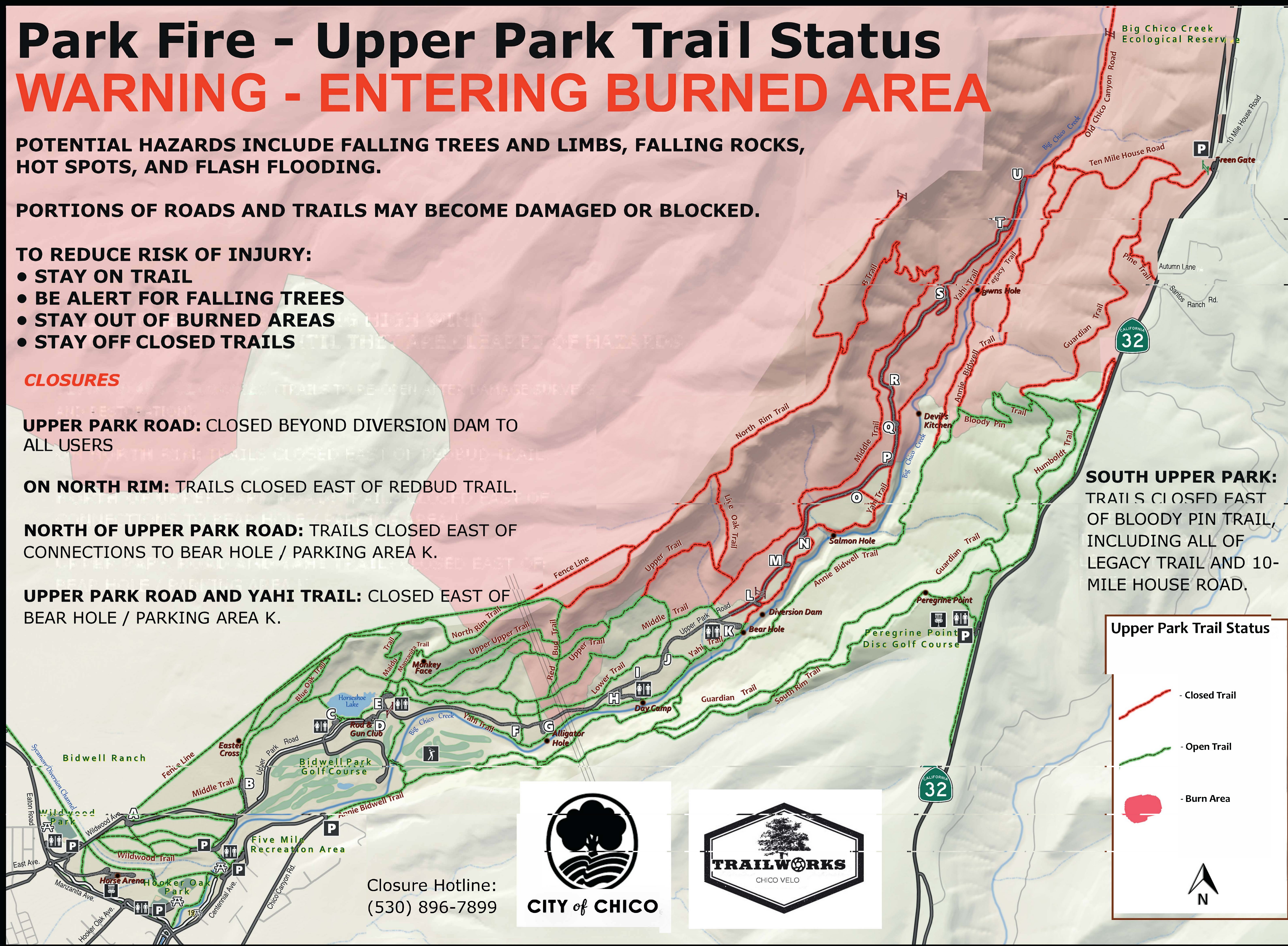
**UPPER PARK ROAD:** CLOSED BEYOND DIVERSION DAM TO ALL USERS

**ON NORTH RIM:** TRAILS CLOSED EAST OF REDBUD TRAIL.

**NORTH OF UPPER PARK ROAD:** TRAILS CLOSED EAST OF CONNECTIONS TO BEAR HOLE / PARKING AREA K.

**UPPER PARK ROAD AND YAHYI TRAIL:** CLOSED EAST OF BEAR HOLE / PARKING AREA K.

**SOUTH UPPER PARK:** TRAILS CLOSED EAST OF BLOODY PIN TRAIL, INCLUDING ALL OF LEGACY TRAIL AND 10-MILE HOUSE ROAD.



**Upper Park Trail Status**

- Closed Trail
- Open Trail
- Burn Area

Closure Hotline:  
(530) 896-7899

