

**NOTICE OF PLANNED CLOSURE OF PUBLIC PROPERTY/ENFORCEMENT OF CAMPING ORDINANCES TO  
LEGAL SERVICES OF NORTHERN CALIFORNIA ("LSNC")**

This notice serves as the required notice of the City's planned closure of public property / enforcement of its Anti-Camping Ordinances and Regulations pursuant to Paragraph 10(c) of *Warren, et al. v. City of Chico, et al.* Settlement Agreement.

Location of Public Property 1: Teichert Ponds, as indicated on the attached Teichert Ponds Map.

The City has determined there are thirteen (13) people camping at this location. Of those people, twelve (12) have been assessed during a prior enforcement operation. Those twelve (12) persons should not be included in the count because they have already refused shelter or have been exited from a shelter due to behavioral problems. Further, there are fourteen (14) abandoned or unoccupied campsites at this location.

Location of Public Property 2: Big Chico Creek from Rose Avenue to Cherry Street, as indicated on the attached Big Chico Creek Map.

The City has determined there are four (4) people camping at this location. Of those people, three (3) have been assessed during a prior enforcement operation. Those three (3) persons should not be included in the count because they have already refused shelter or have been exited from a shelter due to behavioral problems. Further, there are six (6) abandoned or unoccupied campsites at this location.

Location of Public Property 3: Bidwell Park from Sycamore Pool to Manzanita Avenue, as indicated on the attached Bidwell Park Map.

The City has determined there are seven (7) people camping at this location. Of those people, three (3) have been assessed during a prior enforcement operation. Those three (3) persons should not be included in the count because they have already refused shelter or have been exited from a shelter due to behavioral problems. Further, there are fourteen (14) abandoned or unoccupied campsites at this location.

The City will provide the "7-DAY NOTICE OF CLOSURE OF PUBLIC PROPERTY/ENFORCEMENT OF CAMPING ORDINANCES" to all Homeless Persons at this location on August 20, 2024. Further, the City requests LSNC meet with the Target Team to verify counts and confirm the location of enforcement prior to August 20, 2024. If LSNC disagrees with the City's count and contends there are too many people camping at these locations than there are beds available, the City proposes beginning enforcement operations and will stop enforcing on persons at this location who cannot enter shelter because one of the shelters has become fully occupied.

The City has determined there are thirty-three (33) available Pallet Shelters. Three (3) of those Pallet Shelters are available ADA units.

The City has determined there are twenty-nine (29) available beds at the Torres Community Shelter. Thirteen (13) of those beds are in the men's dorm, fifteen (15) are in the women's dorm, and one (1) is in the gender-neutral dorm.

You may confirm the above shelter availability by contacting:

**Pallet Shelter Contact:**

**Name:** Amber Abney-Bass

**Phone:** 530-345-2640; **Email:** [amber@jesuscenter.org](mailto:amber@jesuscenter.org)

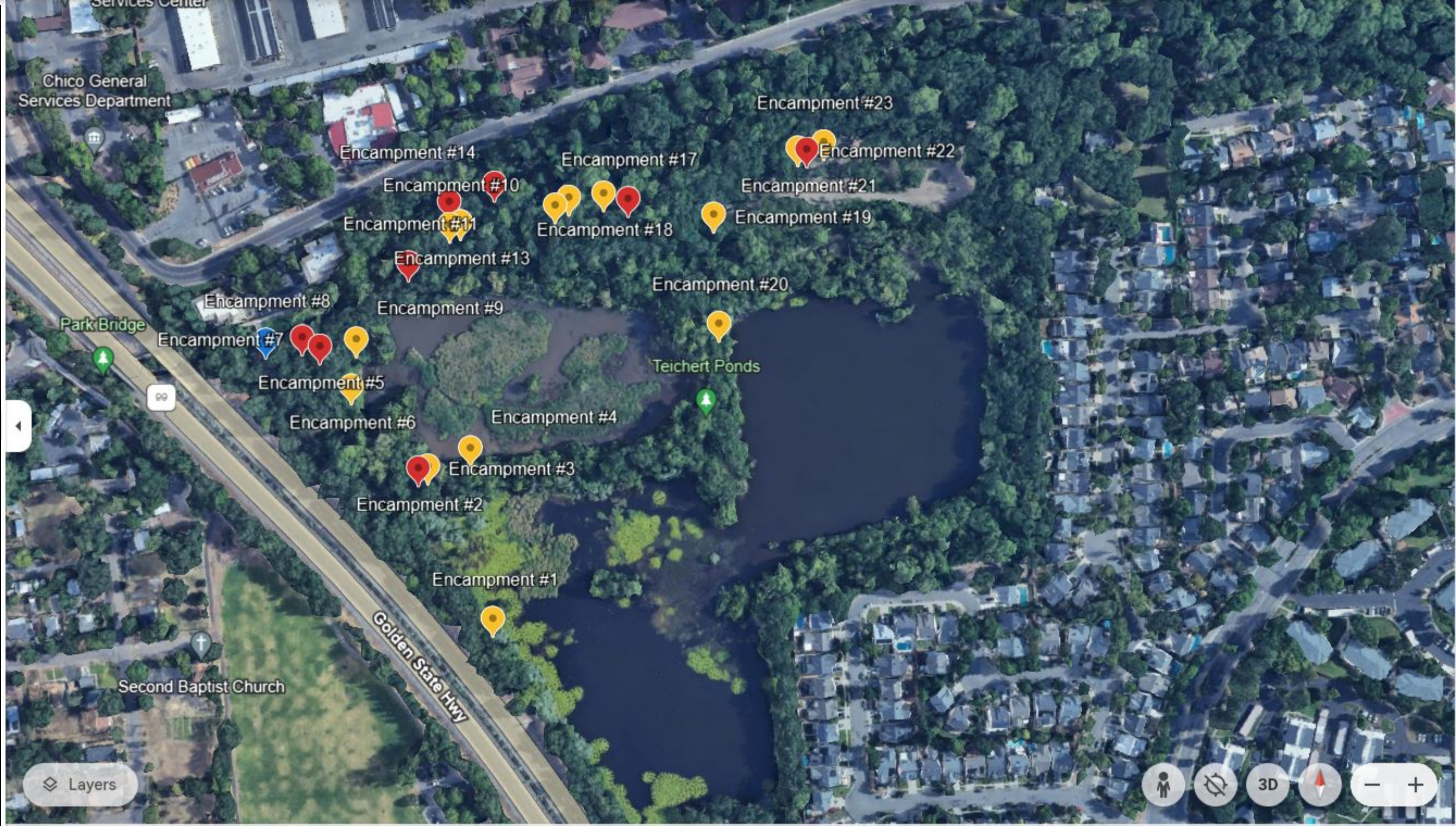
**Torres Shelter Contact:**

**Name:** Jacque Lewkowicz

**Phone:** 530-891-9048; **Email:** [jacque@truenorthbutte.org](mailto:jacque@truenorthbutte.org)



TEICHERT PONDS MAP





BIG CHICO CREEK MAP





BIDWELL PARK MAP

