

**NOTICE OF PLANNED CLOSURE OF PUBLIC PROPERTY/ENFORCEMENT OF CAMPING ORDINANCES TO
LEGAL SERVICES OF NORTHERN CALIFORNIA ("LSNC")**

This notice serves as the required notice of the City's planned closure of public property / enforcement of its Anti-Camping Ordinances and Regulations pursuant to Paragraph 10(c) of *Warren, et al. v. City of Chico, et al.* Settlement Agreement.

Location of Public Property 1: Bike Path Entrances to 20th Street Community Park, as indicated on the Community Park Entrances Map.

The City has determined there are eleven (11) people camping at this location. Of those people, seven (7) have been assessed during a prior enforcement operation. Those seven (7) persons should not be included in the count because they have already refused shelter or have been exited from a shelter due to behavioral problems. Further, there are seven (7) abandoned or unoccupied campsites at this location.

Location of Public Property 2: Lower Bidwell Park, as indicated on the attached Lower Bidwell Park Map.

The City has determined there are eight (8) people camping at this location. Of those people, six (6) have been assessed during a prior enforcement operation. Those six (6) persons should not be included in the count because they have already refused shelter or have been exited from a shelter due to behavioral problems. Further, there are six (6) abandoned or unoccupied campsites at this location.

Location of Public Property 3: Little Chico Creek from Humboldt Road to Bruce Road, as indicated on the attached Little Chico Creek Map.

The City has determined there are three (3) people camping at this location. Of those people, two (2) have been assessed during a prior enforcement operation. Those two (2) persons should not be included in the count because they have already refused shelter or have been exited from a shelter due to behavioral problems. Further, there are nine (9) abandoned or unoccupied campsites at this location.

The City will provide the "7-DAY NOTICE OF CLOSURE OF PUBLIC PROPERTY/ENFORCEMENT OF CAMPING ORDINANCES" to all Homeless Persons at this location on July 12, 2024. Further, the City requests LSNC meet with the Target Team to verify counts and confirm the location of enforcement prior to July 12, 2024. If LSNC disagrees with the City's count and contends there are too many people camping at these locations than there are beds available, the City proposes beginning enforcement operations and will stop enforcing on persons at this location who cannot enter shelter because one of the shelters has become fully occupied.

The City has determined there are twenty-three (24) available Pallet Shelters. Three (3) of those Pallet Shelters are available ADA units.

The City has determined there are forty (40) available beds at the Torres Community Shelter. Twenty-one (20) of those beds are in the men's dorm, nineteen (19) are in the women's dorm, and one (1) are in the gender-neutral dorm.

You may confirm the above shelter availability by contacting:

Pallet Shelter Contact:

Name: Amber Abney-Bass

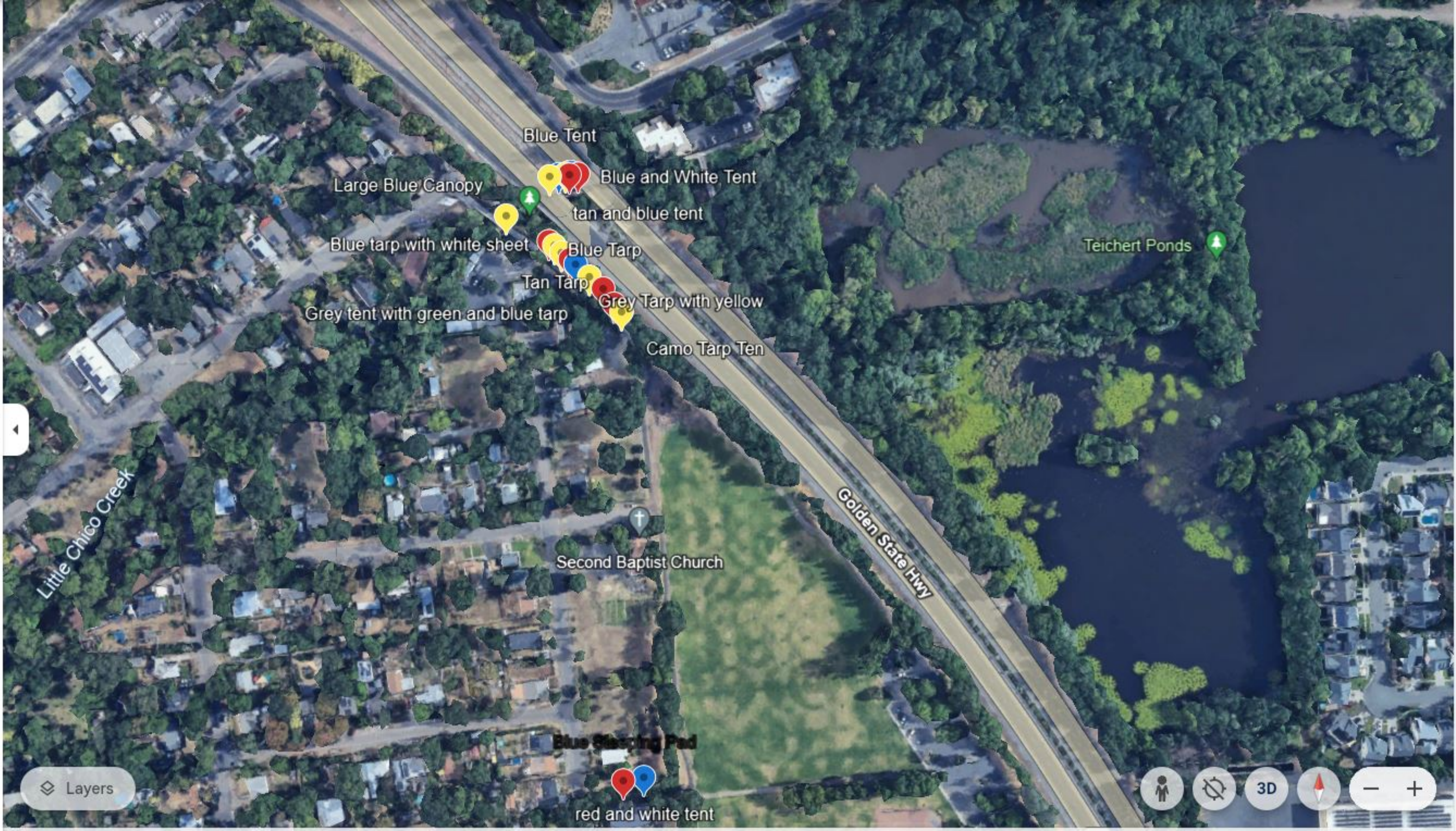
Phone: 530-345-2640; **Email:** amber@jesuscenter.org

Torres Shelter Contact:

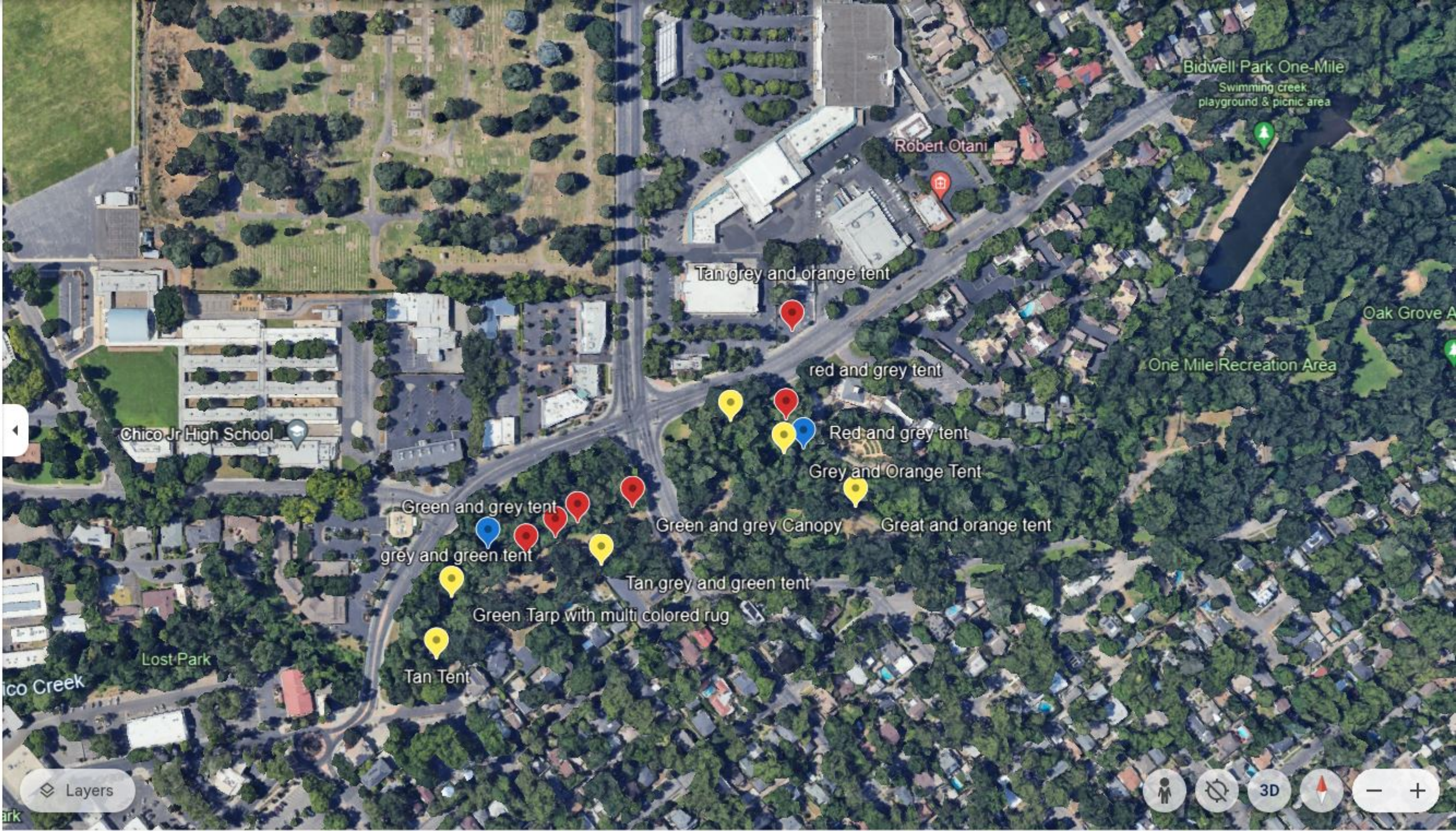
Name: Jacque Lewkowicz

Phone: 530-891-9048; **Email:** jacque@truenorthbutte.org

COMMUNITY PARK ENTRANCES MAP



LOWER BIDWELL PARK MAP



LITTLE CHICO CREEK MAP

