

NOTICE OF PLANNED CLOSURE OF PUBLIC PROPERTY/ENFORCEMENT OF CAMPING ORDINANCES TO LEGAL SERVICES OF NORTHERN CALIFORNIA (“LSNC”)

This notice serves as the required notice of the City’s planned closure of public property / enforcement of its Anti-Camping Ordinances and Regulations pursuant to Paragraph 10(c) of *Warren, et al. v. City of Chico, et al.* Settlement Agreement.

Location of Public Property 1: Comanche Creek, as indicated on the attached Comanche Creek Map.

The City has determined there are twelve (12) people camping at this location. Of those people, ten (10) have been assessed during a prior enforcement operation. Those ten (10) persons should not be included in the count because they have already refused shelter or have been exited from a shelter due to behavioral problems. Further, there are eight (8) abandoned or unoccupied campsites at this location.

Location of Public Property 2: Lower Bidwell Park, as indicated on the attached Lower Bidwell Park Map.

The City has determined there are thirteen (13) people camping at this location. Of those people, ten (10) have been assessed during a prior enforcement operation. Those ten (10) persons should not be included in the count because they have already refused shelter or have been exited from a shelter due to behavioral problems. Further, there are five (5) abandoned or unoccupied campsites at this location.

Location of Public Property 3: Teichert Ponds, as indicated on the attached Teichert Ponds Map.

The City has determined there are twelve (12) people camping at this location. Of those people, eight (8) have been assessed during a prior enforcement operation. Those eight (8) persons should not be included in the count because they have already refused shelter or have been exited from a shelter due to behavioral problems. Further, there are five (5) abandoned or unoccupied campsites at this location.

The City will provide the “7-DAY NOTICE OF CLOSURE OF PUBLIC PROPERTY/ENFORCEMENT OF CAMPING ORDINANCES” to all Homeless Persons at this location on May 13, 2024. Further, the City requests LSNC meet with the Target Team to verify counts and confirm the location of enforcement prior to May 13, 2024. If LSNC disagrees with the City’s count and contends there are too many people camping at these locations than there are beds available, the City proposes beginning enforcement operations and will stop enforcing on persons at this location who cannot enter shelter because one of the shelters has become fully occupied.

The City has determined there are twenty-three (20) available Pallet Shelters. Three (3) of those Pallet Shelters are available ADA units.

The City has determined there are thirty-seven (24) available beds at the Torres Community Shelter. Twenty-one (21) of those beds are in the men’s dorm, three (3) are in the women’s dorm, and zero (0) are in the gender-neutral dorm.

You may confirm the above shelter availability by contacting:

Pallet Shelter Contact:

Name: Amber Abney-Bass

Phone: 530-345-2640; **Email:** amber@jesuscenter.org

Torres Shelter Contact:

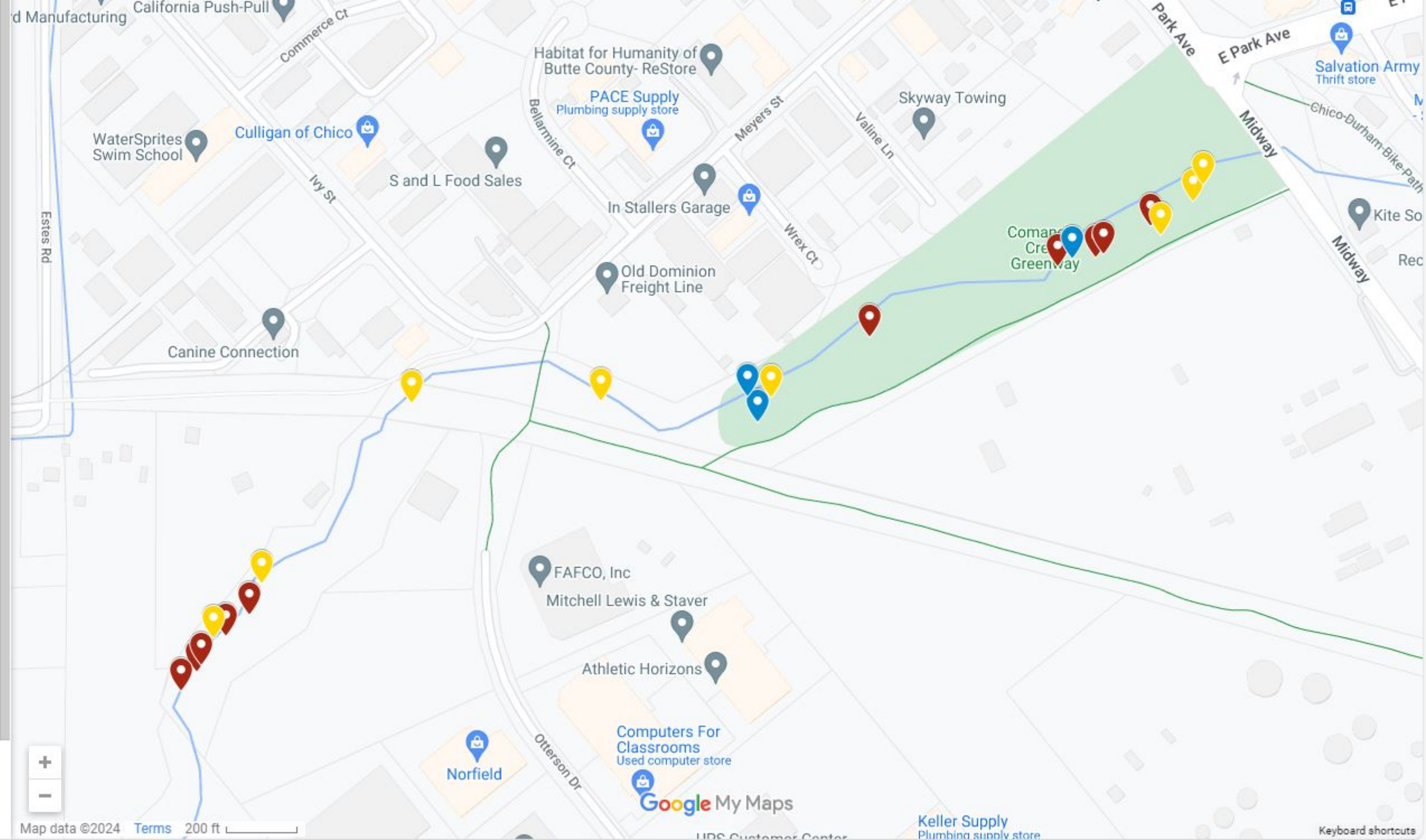
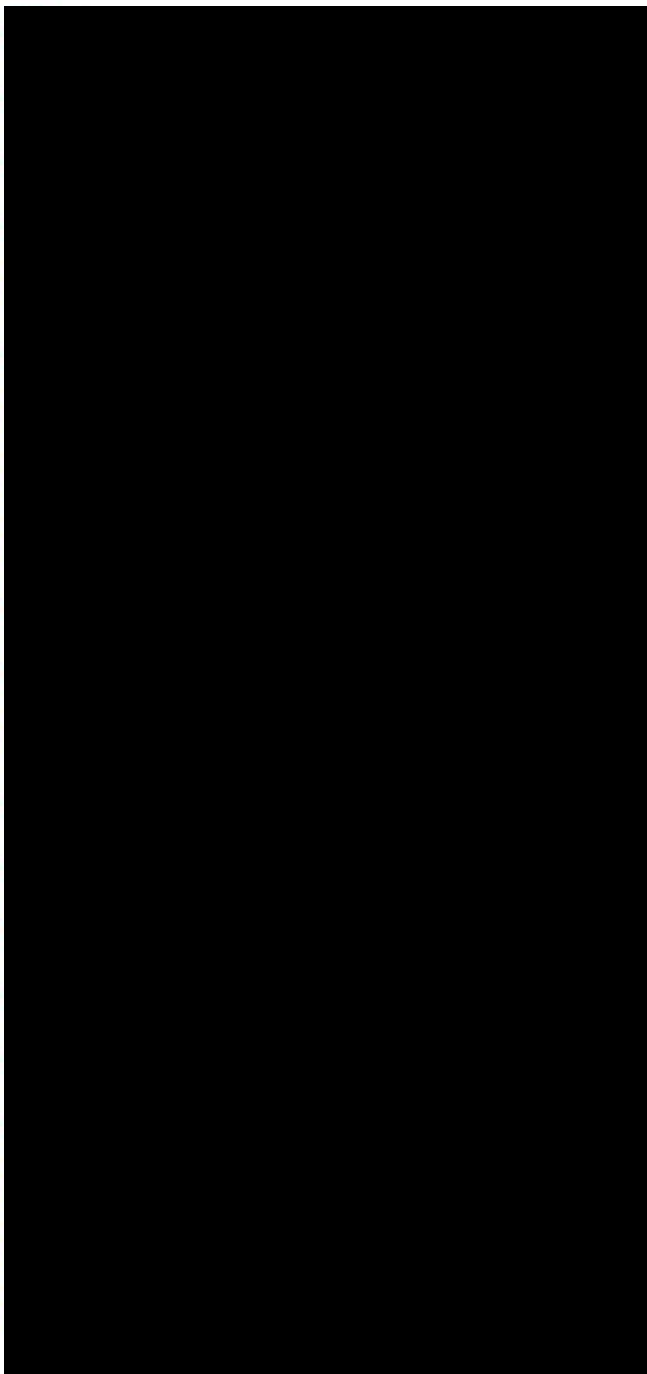
Name: Jacque Lewkowicz

Phone: 530-891-9048; **Email:** jacque@truenorthbutte.org



Untitled layer

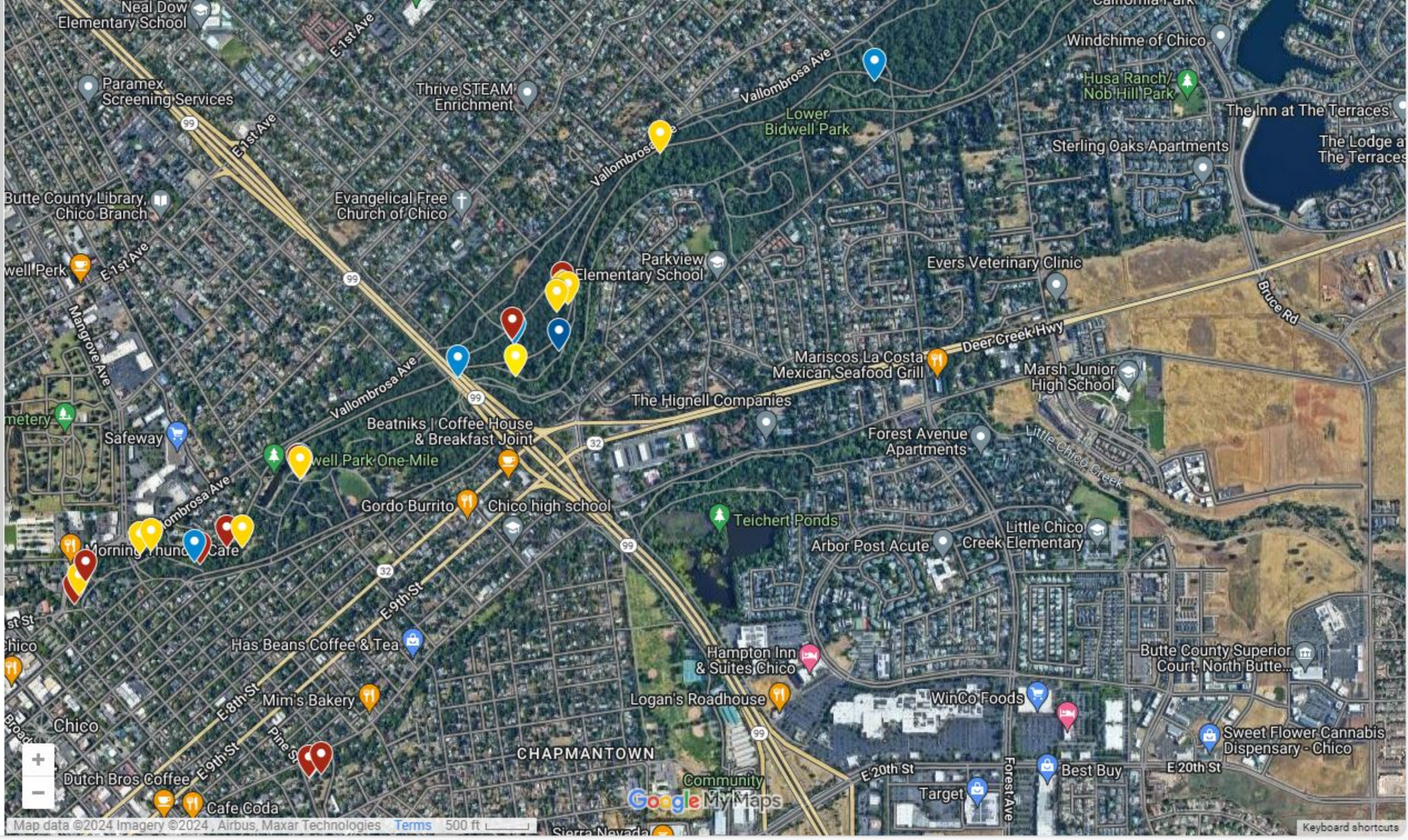
COMANCHE CREEK MAP





Untitled layer

LOWER BIDWELL PARK MAP





Untitled layer

TEICHERT PONDS MAP

